

# Froyle Village Magazine



September 2025

No 521

<https://www.froyleparishcouncil.org.uk/village-magazine>



## TRAVEL WITH MEON

MEMORIES THAT LAST A LIFETIME



*Award-Winning Travel Agent  
on your doorstep!*

Meon Valley Travel, 32 High Street, Petersfield, Hampshire GU32 3JL

Telephone: 01730 711010 | Email: [leisure@meonvalleytravel.co.uk](mailto:leisure@meonvalleytravel.co.uk)

[www.meonvalleytravel.co.uk](http://www.meonvalleytravel.co.uk)



## NEWS & VIEWS

*Parish Clerk - Andrew Potter*

*Email: [clerk@froyleparishcouncil.org.uk](mailto:clerk@froyleparishcouncil.org.uk)*

*Web: [www.froyleparishcouncil.org.uk](http://www.froyleparishcouncil.org.uk)*



The Parish Council (PC) met on 14 July but not in August. The next meeting is on Monday 15 Sept. at 19.00 in the Village Hall. A summary agenda will be displayed prior to the meeting with the detailed agenda displayed on the PC Website. All residents are welcome to attend and if there is a wish to raise any subjects these should be notified to the Clerk five days in advance of the meeting.

The meeting heard from our EHDC District Councillor (Tony Costigan "TC") that progress continued to be slow in getting the Hampshire police and particularly the Police Commissioner to accept that the data provided by the AutoSpeedwatch cameras could be used to combat speeding through rural villages such as Froyle - the PC will review the most effective method for speed monitoring at an upcoming meeting. An update was received on the proposal to create Unitary Authorities (UAs) which will replace both the District and County Councils by 2028. HCC are consulting on how to group district councils into UAs and residents are encouraged to submit their views. TC was also asked for advice and assistance on the availability of grants to finance the proposed upgrade to the Rec facilities.

The PC was grateful for the detailed and extensive feedback received from residents who visited the PC stall at the fete on possible facilities to be installed on the Rec as well as what should replace the pirate ship. It was agreed to set up a working group to develop a project plan on which residents from all age groups would be consulted before any decisions were taken. This group will also look at available grant funding opportunities.

Residents will have observed a number of activities around the village over the summer. On H&C Hill, this included traffic lights to install a power supply to Aion Farm and clearance of vegetation from the Treloars overflow car park (the PC is trying to determine what is being planned for that site). The excavations above the A31 are to level dips in the field by Bonhams Farm caused by bombing in WW2; Froyle Estate is also constructing attenuation ponds to manage rainwater run-off from their buildings at Home Farm in Upper Froyle. Following regular reporting to Highways, the road signs at the bottom of H&C Hill at the junction with the A31 have finally been replaced. Flooding in this area by the BP garage has also been addressed by Highways and the drains cleared out. Unfortunately the best we could get for the flood at the end of Coldrey's drive in Lower Froyle was the provision of flood warning signs!

Re footpaths, the new map to be installed on the side of the Pavilion has now been ordered. Discussions have been held with Hampshire Countryside and Alton Ramblers to upgrade some of the footpaths around the village including installing a footbridge across the ditch on the path between Gid Lane and the Anchor. This will hopefully be put in place by the time it starts to get muddy again. It was also agreed to undertake remedial work on the steps that were installed by the quarry as it was agreed that these are too steep and to improve the surface and the steps on the path between the Rec and Park Lane.

Froyle Park has been busy with weddings which have generated noise complaints by residents to EHDC Environmental Health both re event activities such as loud music, guests shouting, drumming, drones etc. as well as the event clear up that continues into the early hours. The venue is rented out on a dry hire basis so all facilities especially catering must be contracted in and then cleared immediately the event finishes ready for the next day. Noise disturbance to residents has not been helped with windows being open in the hot weather! Leaflets were distributed by the PC to allow residents to follow a more structured complaint process to ensure these reach the right EHDC department and can be collated by the PC. Hopefully your continued feedback will result in some greater attention by EHDC to find a solution to the problem.

Planning activity since the last Magazine has largely been limited to tree works on which the PC has not had any comments. The biggest issue for the PC has been the proposed development of 160 houses in Holybourne. This has been objected to by the PC, Alton Town Council and many local residents. In response to comments that residents were unaware of planning applications, the PC has put the list of all applications relevant to Froyle on the PC website. Residents can access details of each application and make comments via the EHDC Planning portal.

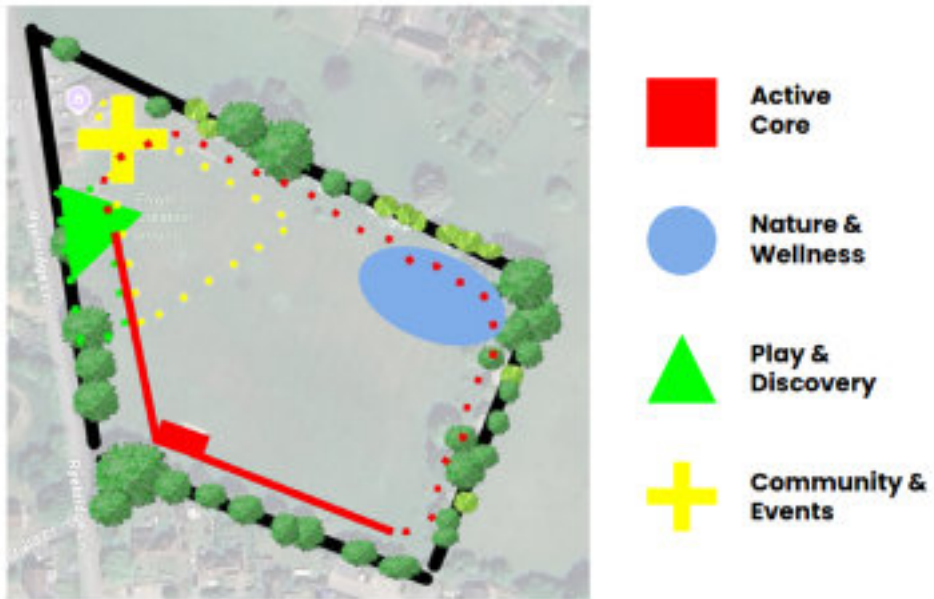
There's always lots going on in Froyle for all ages and interests so do take a look at the Village website <https://www.froyleparishcouncil.org.uk/village-life> where you can find the village calendar, details of groups and activities, as well as links to footpaths, useful contacts, digital copies of the Magazine, etc! More information is being added all the time so do keep visiting this site and bookmark it as the first place to check for anything Froyle related. The PC regularly reviews how best to communicate with residents whether by email, Facebook or other social media – please get in touch if interested in joining the email list or getting involved in any activity, volunteering etc.

## Recreation ground update

We have been busy putting together an inclusive strategy for the recreational ground, hoping to create a sustainable development plan that will drive visitation.

Our mission is: “To re-energise Froyle Recreation Ground as a dynamic, inclusive and sustainable community hub - where every generation and ability can connect, play, relax and grow together, while celebrating our village heritage and nurturing the natural environment.”

To ensure we stay on track, we have identified main user groups - from dog walkers to young families - and have linked use-cases/needs/potential amenities against each. To help maximise the appeal of any new amenity, we have also zoned the rec into 4 themes: Active Core, Nature and Wellness, Play & Discovery, Community & Events.



We are still canvassing for ideas on what would make YOU want to visit the rec, with a quick thanks to Mary Fay from Lower Froyle for bringing her own thoughts on what great would look like for the Pirate Ship replacement. The earlier feedback from the fete was fantastic and we have incorporated much of that as a result.

As you can imagine, everything is funding dependent, but with a plan we can begin to target our requests and highlight the benefits more easily. Hopefully by Q4 we will start applying for funding and if successful we should start to see some action mid 2026.

*Mark Freeman*



Bookings:

Sarah Zorab

01420 520361

[www.froylevillagehall.co.uk](http://www.froylevillagehall.co.uk)

**Dear all**

As we approach the tail of this beautiful summer it's a perfect moment to reflect on what autumn/winter will bring for the Village Hall and we have two exciting events coming up.

**\*\*\*SAVE THE DATE\*\*\***

**Car Boot Sale – Saturday 25 October – from 8.30am (weather permitting)**

Interested in being a seller? – please contact Royston Annible  
[royston.annible@hotmail.co.uk](mailto:royston.annible@hotmail.co.uk) for more details

**Bonfire & Fireworks – Wednesday 5 November – from 6pm**

We are delighted once again that we will have both the bonfire and firework display. If you are doing a clear out in the upcoming weeks then we are keen for your dry untreated wood, please contact Charlie Findlay [charliefindlay@outlook.com](mailto:charliefindlay@outlook.com)

**What we want**

Dry wood of any type  
Branches & twigs  
Wooden furniture (unupholstered  
only please)  
Kitchen units (but only if 100%  
unlaminated wood)  
Pallets

**What we DON'T want**

Green waste  
Leaves & grass  
Household waste  
Mattresses and bedding  
Metal  
Plastic  
Building waste

**Would you like to volunteer?**

As always we are incredibly grateful for the volunteers who support such events and we are keen to expand our volunteer pool, if you would like to join our volunteer list then please get in touch with David Birn [dabirn@gmail.com](mailto:dabirn@gmail.com).

**Lastly,**

I would also like to extend a special thank you to Froyle resident Jeremy, Managing Director of Vanti – a technology company specialising in smart building systems who has kindly donated a high-quality NEC P554U projector to the Village Hall. This fantastic upgrade offers bright, sharp image quality and will greatly enhance future events and community gatherings. Thank you, Jeremy, we really appreciate it!

*Gillian Paul*



---

# September Activities at the Village Hall

---

<b>Dynamic Pilates</b>	<b>Mondays 1, 8, 15, 22, 29 Sept</b>	<b>10am – 11am</b>
<b>Gentle Pilates</b>	<b>Mondays 1, 8, 15, 22, 29 Sept</b>	<b>11am - Noon</b>
<b>Mixed Pilates</b>	<b>Weds 3, 10, 17, 24 Sept</b>	<b>6:30pm – 7:30pm</b>

Move with Tegan. £10 per class, £50 for a block of 6.

For bookings or more information contact Tegan on 07761209998 or [teganhansensa@gmail.com](mailto:teganhansensa@gmail.com)

<b>Meeting Place</b>	<b>Fridays, Sept 5, 12, 19, 26</b>	<b>10am - Noon</b>
----------------------	------------------------------------	--------------------

Join us for delicious homemade cakes, hot drinks and good conversation. There are books and jigsaws to borrow., and you can learn to crochet if you'd like. Everyone welcome.

<b>Life Drawing</b>	<b>Sunday 7 Sept</b>	<b>4 - 6pm</b>
	<b>Tuesday 16 Sept</b>	<b>10am - Noon</b>

Try your hand at drawing the unclothed human figure from professional models. Untutored. Beginners welcome. Bring your own materials. £10 cash at the door. [dabirn@gmail.com](mailto:dabirn@gmail.com) for more information or to rspv.

<b>Garden Club</b>	<b>Saturday 13 Sept</b>	<b>2-4:30pm</b>
<b>Autumn Show</b>		

Give it a go! Runner beans, photographers, cake bakers, crafty creators. Fill forms at the Friday Meeting Place 10am to Noon, and bring your entries to the Hall on Saturday before 10.30. The show opens at 2.00 pm. Enjoy the displays, teas and plants for sale.'

<b>Parish Council</b>	<b>Monday 15 Sept</b>	<b>7.00 - 10:30pm</b>
-----------------------	-----------------------	-----------------------

Agenda: <https://www.froyleparishcouncil.org.uk/your-council/agendas-and-minutes>.

<b>Harvest Supper</b>	<b>Friday 19 Sept</b>	<b>7.00 for 7:30pm</b>
-----------------------	-----------------------	------------------------

Everyone welcome. Adults £12. Children £6.

For information and tickets contact

Gill Bradley 01420 520484 or Jenny Gove [govejenny@gmail.com](mailto:govejenny@gmail.com)



# The Meeting Place

The Meeting Place takes place every Friday morning in the Village Hall from 10am to 12 noon, so do come and join us for delicious home made cake, hot drinks and good conversation. We also have a good selection of books and jigsaws to borrow.



We will be hosting a Macmillan coffee morning on September 26th so please come along and join in the fun, and help us raise funds for this amazing charity.

## September Kitchen Helpers

(No need to be at the Hall till 10.00am)

5th	Jenny Bryan Brown
12th	Caroline Findlay
19th	Jane Macnabb
26th	Caroline Wilkinson

## September cake bakers

5th	Louise Marston	Cherida Cannon	Jane Stewart-Smith
12th	Sarah Roberts	Madeleine Black	Charlie Inskip
19th	Julie Southern	Sue Sharman	Gillian Pickering
26th	Chris Muddiman	Corinna Whines	Janet Dobson

Please organise swaps amongst yourselves if possible and let us know, or contact us if you have a problem. Please let us know if you can't bake for any reason, we can freeze cakes made in advance! It is helpful to know what you are baking so we get a good selection! Cakes can be left in the porch at Wykeham House, Lower Froyle on Thursday and before 9.30 on Friday or brought to the Hall before 10.00 on Friday.

Gill Bradley 520484  
[gabbradley@gmail.com](mailto:gabbradley@gmail.com)

Susie Robertson 520820  
[sjrinfroyle@gmail.com](mailto:sjrinfroyle@gmail.com)

Jenny Gove 23697  
[govejenny@gmail.com](mailto:govejenny@gmail.com)



## Froyle Fête and Flower Show 2025

All Froyle Fêtes are in essence the same, but on the day they're all very different. There are the relaxed planning sessions that start in March, the slightly more urgent and focused ones during June and the final week's mad dash to the Saturday 1pm finish line.

We all fret about the weather, but what's the point...? 'It'll be what it'll be.'



And so it was this year: many villagers turned out to help set-up, run and take down the various stalls, events, raffles and competitions. The Dog-Show, Children's Games and Tug-O-War were the arena crowd pleasers; burgers, hot-dogs, beer, tea and cake sustained energy levels; and the weather was perfect (no rain, not too hot and not too cold). And thankfully people from Froyle, the surrounding villages and from all over Hampshire and Surrey came to enjoy a traditional summer's afternoon out.

It's an event that marks mid-summer in the village. A key marker in the calendar between the cold Christmas festivities, Spring and Easter Meeting-Place, and the Autumn Harvest. It refreshes friendships and acquaintances and does that most important of things: bind our rural community together in a unique, welcoming and very English way. For all of the hard work and effort it's a well-supported magnificent celebration of village life, and long may it continue.

This was the ninth Froyle Fête Julie and I have been in charge of, along with William and Mary Knowles we got it past the Covid hiatus, and we're now handing on the reins to new management for summer 2026.

The Fête is also a major contributor to village community finances and helps to maintain the community infrastructure we all enjoy throughout the year.

This year our net takings were £6,125 which is a 7.5% increase over 2024. A very credible result we were delighted with.

The Fête Organising Committee is well worth getting involved with, especially if your idea of a good evening out involves a sociable glass of wine, crisps and some daft conversations about 'doing something a bit different this year'....

Thanks again to everyone who pitched-in to help with Fête 2025. Each and every one of you is a star!

*Nigel & Julie Southern*



## Froyle Wildlife

### Events over the summer

#### Pond dipping



*Children's pond dipping*

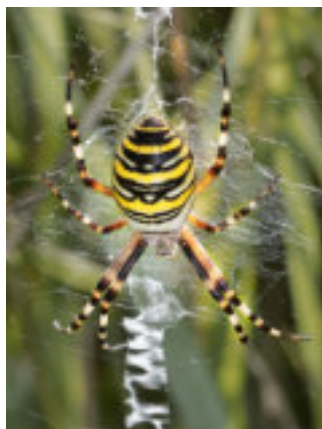
On Sunday 20 July several families enjoyed a lovely morning of pond dipping and the wildlife Pond near Gid Lane. Due to the lack of rain we were concerned that the pond level would have dropped too much for safe dipping so we had a smaller group this year. Despite this, we managed to collect a range of tiny creatures and examined them using our new portable wireless microscope. The microscope proved very popular with the children who quickly learnt how to use it to view water beetles, boatmen, dragonfly nymphs and young newts in greater detail. We created short videos, some of which are available to view on our Instagram site [@froylewildlife](https://www.instagram.com/froylewildlife). Despite the lower water level of

the pond, it was teeming with life and we enjoyed spotting dragonflies and damselflies too. The children and adults were amazed to see a 'wasp spider' with very long legs and vivid black and yellow stripes. Thank you to Barry Clark for bringing all of the equipment along and finding the wasp spider! We had a great time and hope to run our annual dip again next year.

**Jenny Matthews**

#### Wildlife Pond and meadow open day

After weeks of hot dry weather, we had drizzle on this July morning that deterred many visitors. It brightened in the afternoon for the dragonflies and butterflies to start flitting among the wonderful wildflower meadow that surrounds the pond. Odonata seen included Emperor dragonfly, Blue-tailed damselfly, Common darter, Small Red-eyed damselfly, along with bees, ladybirds and hoverflies. Among the vegetation was a metallic green Rose Chafer beetle and a new species for the location, a Turnip sawfly. The area is maintained by Froyle Wildlife volunteers and is definitely a hotspot for biodiversity in Froyle.

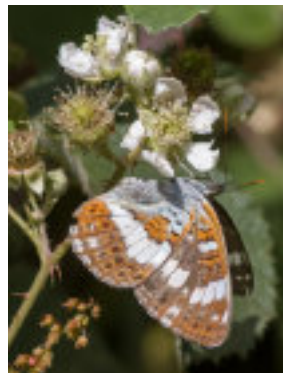


*Wasp spider*

## Woodland butterflies

A morning of warm sunshine was ideal for our walk on 7 July in Alice Holt forest. We enjoyed seeing the variety and numbers of butterflies at Abbots Wood along with close encounters while they were nectaring. We spotted 17 species: Silver Washed Fritillary (many), Meadow Brown, Red Admiral, Brimstone, Small White, Large White, Ringlet, Holly Blue, Comma, Large Skipper, Gatekeeper, Small/Essex Skipper, White Admiral, Peacock, Speckled Wood, Common Blue and Purple Hairstreak.

There were no positive sightings of Purple Emperor, although there were tempting flutterings occasionally high up in the trees. We had not seen as many Silver Washed Fritillaries for several years and it was lovely to see their courtship flights as well.



*White admiral*

## Dates for your diary

Friday 24 October, Regenerative Farming and AGM, talk by Simon Porter, 7.30pm in Froyle Village Hall.

Tuesday 25 November, Beaver and Water Vole Reintroduction, talk by Dave Elliot, 7.30pm in Froyle Village Hall.

Do tell us about wildlife that you see in Froyle with or without photos by email to [info@froylewildlife.co.uk](mailto:info@froylewildlife.co.uk) or put on Instagram with [#froylewildlife](https://www.instagram.com/froylewildlife).

## Can you help to restore an historic pond in Froyle which has silted up?



*School pond, Upper Froyle*

On Saturday 6 September 10am to 1pm we plan to remove about a quarter of the vegetation and silt to benefit the known population of great crested newts as well as other protected species. School pond (also known locally as Dew pond) was shown on the 1845 tithe map of Froyle. Come to the site on Ryebriidge Lane below the churchyard. Recommend appropriate clothing, gloves and footwear for digging and moving silt. If you can, do fetch a

spade or fork or ideally a wheelbarrow. For more information see <https://www.froylewildlife.co.uk/school-pond-froyle-restoration-6th-sept-2025/>.

Please let me know if you can come along (even for just 1hr) by contacting [info@froylewildlife.co.uk](mailto:info@froylewildlife.co.uk) or 01420 23520.

*Barry Clark*

## **SUMMER SHOW SUCCESS**

The garden club are very grateful

To the bakers, gardeners and sandwich makers.

Who fitted in the extra hours

Producing bread and beans and flowers.

Buckets were hauled at break of day

And soil was turned in stubborn clay.

With no rain to soak the thirsty root

Or breeze to cool the wilted shoot

It wasn't an easy year to grow

Prize winning produce for the show

But brilliant efforts from one and all

Meant wonderful entries filled the hall.

So thank you, thank you we all say

For such a bloomin' happy day!



**Pam Walls** won a Rose Bowl, a Plate, a Cup and an award. She triumphed in the Domestic, Fruit and Vegetable and Baking Classes. **Nick Whines**, **Julie Southern** and **Katie Snowball** were her closest rivals! **Jane Macnabb's** roses had a second flush just in time to win. All the photographs were outstanding and **Barry Clarke** won the Pollock Bowl in the popular vote.

**Alice Ghinn** took home the Robertson trowel for the best homemade drink and **Jo Mills** 'Octopus for Otto' won the Family prize. **George Annible** was the under 16 winner and **Brenda Milam** won the cup for flower arranging with **Cherida Cannon** a close second and **Barbara Wheatley** was the judge's choice.



Thank you to everyone who took part, it would not have happened without you!

*Jane MacNabb*

## September in the Potting Shed



**Froyle Gardening Club**

What an interesting year we have had in the garden this year. Our changeable climate is giving us lots to think about. One of the terms being used at the moment is ‘resilience gardening’. It is about looking at our gardens seeing what plants are coping with the changes and how they are coping. Each site will be different as the soil, aspect and plants used will have a different response to the changes, even in a small

community.

Looking after our soil is one of the main ways we can build resilience in our gardens. Ditch the brown bin and make your own compost. Anything that is or was growing in your garden can be made into compost. If you have a lot of woody material then invest in a shredder. The new quiet drum shredders are brilliant cutting up to 45mm diameter wood as well as all your non woody material. A Dalek compost bin will be fine for most small gardens – 2 would be even better.

Compost will improve the soil, build in greater water holding capacity as well as allowing better drainage in wet weather and very importantly increase the biodiversity that has been lost in our soils by constant cultivation and no organic material being added to it. If you want more advice on how to compost come and visit the Froyle Gardening Club Autumn show: we will be happy to give you details on how to compost.

As to the rest of the garden, keep deadheading, forget about the lawn until we get some moisture in the soil and just look at what is doing well and enjoy that.

*Geoff Hawkins*

“How does your Garden Grow, with tasty toms and super spuds, long runner beans and funny veg, oh and there are flowers, cakes and creative arts too.”

Is this you? Then come and enter the Autumn Flower Show. It is for young and old, whether you are a grower or just a creative person. Young ones bring Granny and Grandad and show them what you can do. Loads of help on how to prepare and show your entries. It is all just for fun – but, you might win a trophy or a cup. More details on how to enter on page 14, overleaf.

The poster has a light beige background decorated with autumn-themed illustrations. In the top left, there are green leaves and red berries. In the bottom left, there is a large orange pumpkin. On the right side, there are several autumn leaves in shades of yellow, orange, and purple. The text is centered and uses a mix of bold and regular fonts in dark green and black colors.

Froyle Gardening Club

# Autumn Show

WITH TEA, COFFEE & CAKE AS WELL AS A PLANT SALE

**SATURDAY 13th SEPTEMBER**  
**at Froyle Village Hall, GU34 4LG**

OPEN TO ALL GARDENERS, BAKERS, PHOTOGRAPHERS, FLOWER  
ARRANGERS AND CRAFTERS, BEGINNERS WELCOME!

ENTER BY 5PM ON FRIDAY 12 SEPT

SHOW OPEN TO THE PUBLIC AT 2PM

FULL SCHEDULE AND ENTRY FORMS AVAILABLE AT  
[WWW.FROYLEGARDENINGCLUB.CO.UK](http://WWW.FROYLEGARDENINGCLUB.CO.UK)



# Froyle Gardening Club

## Autumn Show - recipe



We hope you enjoy making this Apple Cake.

It is the recipe to use if you are entering Class 53 in the Domestic Section for the Autumn Show!

5oz (150g) margarine or butter melted

2 large eggs

8oz (225g) caster sugar

1 teaspoon almond essence

1 level teaspoon baking powder

8oz (225g) self-raising flour

12oz (350g) Bramleys, sliced (weight after peeling)

1oz (25g) flaked almonds

Sprinkling of demerara sugar

Heat oven to 325F, 160C, gas mark 3. Grease a loose bottomed 8inch 20cm cake tin.

Put all the ingredients, except apples, almonds and demerara sugar, in a mixing bowl. Mix well until smooth. Spread half this mixture over the base of the tin. Spoon over prepared apple. Dot with rough teaspoons of the remaining mixture, sprinkle with almonds and demerara sugar.

Bake for about 45 minutes until pale golden and shrinking away from sides of tin. This is a tried and tested favourite recipe from Mary Berry 🍏

---

## Maureen Fry

Would like to invite friends to come and celebrate her 90th birthday 🎂

On Saturday 20 September from 12-4pm, in Froyle Village Hall.

Hope you can make it.

Please RSVP her daughter (Annette Eyre) via email

[eyre-a@sky.com](mailto:eyre-a@sky.com) or text to 07795270184



## Dead Wood

When a tree in our garden gets old and starts to die, our usual response is to cut it down, maybe burn the logs. We often have the good intention of planting a nice new sapling to replace it, too: but have you considered what an important role dead timber plays in supporting your garden ecosystems?



In fact, dead wood is associated with its very own set of species of invertebrates numbering into the hundreds and birds such as woodpeckers, nuthatches and treecreepers feed on them in dead, but standing, trees. Interestingly, dead wood in standing trees (i.e. still upright) will play host to different invertebrate species from fallen dead wood laying on the ground, so those allowed to remain in place offer incredibly valuable, and increasingly rare habitat for wildlife that can live nowhere else.

Living trees may also retain large sections of deadwood. A natural part of the lifecycle of veteran and ancient trees is the hollowing of their trunks, caused as older heartwood begins to decay at their centre. Depending on the species, a tree can live for hundreds of years while actively decaying in parts, with living wood continuing to support the tree towards the outside of its trunk. This decay creates perfect nesting environments for many types of birds, from blue tits to tawny owls.

So, if you can leave a veteran, or even a dead tree standing, you will be doing a huge amount to support biodiversity!

If a tree has to be felled, consider leaving the stump in situ or have it dug or winched out to make the start of a ‘stumpery’. Popular with the Victorians, a ‘stumpery’ is a garden feature created by piling tree stumps together and interplanting with ferns and other shade-loving plants. It’s a great way to make the most of old stumps, and creates a great variety of wildlife habitats.

You can also put logs to good habitat use by creating a log shelter. Stacking logs in a corner of the garden will create lots of nooks and crannies for wildlife to occupy, and the wood in the centre and bottom of the stack stays wetter, rotting more quickly and providing more habitat opportunities than individual dry logs alone. Damp conditions behind peeling bark are very inviting for woodlice, spiders and beetles, which in turn will benefit hedgehogs, frogs and shrews that feast on the insects at ground level. Butterflies and ladybirds take up residence in the drier parts over winter.

Even a small pile of logs can support a multitude of different insects, provide a refuge and hunting ground for small mammals, reptiles and amphibians, and shelter for over-wintering and hibernating wildlife. Fungi, wood-boring insects, woodlice, beetle grubs and wood wasps all find homes and food in the logs. These are prey for other animals too: spiders, frogs, toads, hedgehogs and birds. A simple pile of logs can very quickly become a flourishing wildlife community.

So instead of seeing dead wood as unsightly or dangerous, consider the benefits to your garden wildlife – and help to protect this vital link in the biodiversity chain in your garden.

*Sue Lelliott, Froyle Tree Warden*

---

## **FLOWER ARRANGING THE SUSTAINABLE WAY**



Are you someone who is interested in/enjoys flower arranging and would like a few tips on how to do it in a more sustainable way, using locally grown flowers and avoiding the use of floral foam?

Susanne Kennedy, professional florist and founder of Milston Flower Barn, Wiltshire, will demonstrate and give advice on how to achieve this.

**THURSDAY 25<sup>TH</sup> SEPTEMBER, 2 pm – 4 pm**

**FROYLE VILLAGE HALL**

**£10.00 per ticket  
(Includes tea and cake)**

**EVERYONE WELCOME**

**For tickets please contact: Barbara Wheatley or Gill Bradley  
email: [barbara@thewheatleys.co.uk](mailto:barbara@thewheatleys.co.uk) or [gahbradley@gmail.com](mailto:gahbradley@gmail.com)**

---

## **DOGS OF FROYLE–WE NEED YOUR HELP!**



We are planning a calendar featuring the dogs of Froyle, all for a good cause. If you have a photo of your dog which you would be happy to share, please email it to [nigelsouthern@mac.com](mailto:nigelsouthern@mac.com).

## 100 Club

The winners in the July and August draws were:

### July

1st Jo Mills  
2nd Ann Figgins  
3rd Nigel Bulpitt  
4th Lance Cavannagh

### August

1st Julie Southern  
2nd Nick Whines  
3rd Linda Cooper  
4th John Sexton

Congratulations to all!

*William Knowles*

07775 928933, [wbk@wbkknowles.com](mailto:wbk@wbkknowles.com)

---

## A Note from the Editors

The Editors would like to thank the Parish Council for providing us with a new laptop computer and desktop publishing software, on which this magazine has been produced, for the first time. The old equipment was obsolete, and could not run Windows 11, so would not be supported after October of this year. The software was also no longer supported.

The new laptop and software are a great improvement and have made the production of the magazine much easier, even though the magazine itself should look and feel exactly the same. In the next few months we may experiment with a few minor changes to bring the look up to date.

If you would like to join the team we would be very keen to hear from you, by email to [froylemageditor@gmail.com](mailto:froylemageditor@gmail.com).

*The Editors*

---

## FROYLE SMALL ADS

**A reminder - Small ads are *free* to all Froyle residents** (one per month).

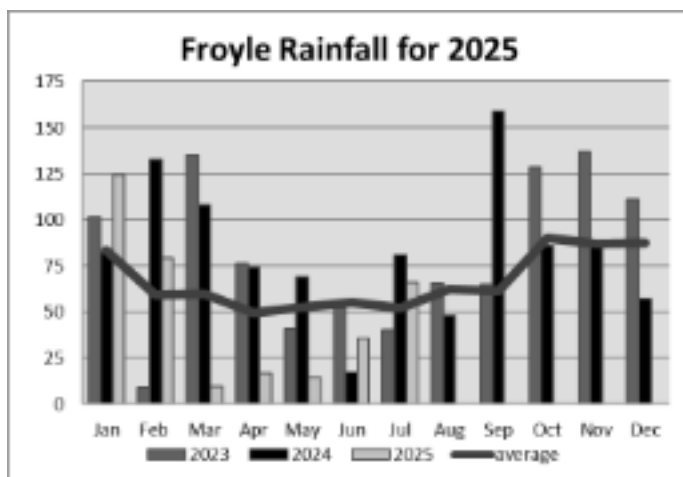
So why not advertise items you no longer need, or are looking for, right here?

Or indeed services you can offer, or are trying to find?

Just email your text - and a photo if you have one - to [froylemageditor@gmail.com](mailto:froylemageditor@gmail.com).

## Froyle Rainfall for June and July, 2025

	June		July	
This year	35.5 mm	1.4 ins	66 mm	2.6 ins
Last year	17 mm	0.7 ins	80.5 mm	3.2 ins
Wettest (2012/2007)	155.5 mm	6.1 ins	139.5 mm	5.5 ins
Driest (1995/2022)	5 mm	0.2 ins	1 mm	0.04 ins
Long-term averages – the 4 <sup>th</sup> driest and 2 <sup>nd</sup> driest month	54.5 mm	2.1 ins	52.1 mm	2.0 ins
Total rainfall for the year so far			345.5 mm	13.6 ins
Long-term average for the year so far			411 mm	16.2 ins



This time last year the total rainfall so far for the year was 563 mm, so 2025 is almost 40% down, despite July actually being above average – as all will recall, 34.5 mm of that occurred on the last day of the month. The last five months have produced only 145 mm of rain - only 1990 and 1995 had less (120 mm and 111 mm) – so, like them, a below average for the year is now in prospect.



**“The Umbrella Man”**

# ST MARY'S CHURCH NOTES

**Vicar: The Reverend Matt Boyes** 07469 270590 email [matt@benbinfro.co.uk](mailto:matt@benbinfro.co.uk)

**Administrators:** 01420 23339 E: [admin@benbinfro.org](mailto:admin@benbinfro.org) W: [www.benbinfro.co.uk](http://www.benbinfro.co.uk)



## Church Wardens:

Simon Marshall 07734 214419

[sm517@icloud.com](mailto:sm517@icloud.com)

Jack Stephenson 01420 23216

[romanhorse@hotmail.co.uk](mailto:romanhorse@hotmail.co.uk)

**Anna Friend:** Sarah Roberts

[07831 294852 sarabrfroyle@gmail.com](mailto:07831294852.sarabrfroyle@gmail.com)

## Benefice Pastoral Care

Nick Carter 01420 489122

[nick.carter1945@outlook.com](mailto:nick.carter1945@outlook.com)

## Anna Chaplain:

The Rev Fran Harrison 07765 058593

[annachaplain@benbinfro.co.uk](mailto:annachaplain@benbinfro.co.uk)

## SEPTEMBER SERVICES

Sun 7 Sep	9.30am	Binsted	Holy Communion & Children's Church
	11.00am	Oakhanger	Holy Communion
	6.00pm	Bentley	Praise
Sun 14 Sep	11.00am	Binsted	Holy Communion - Holy Cross Day
	6.00pm	Kingsley	Praise
Sun 21 Sep	<b>9.15am</b>	<b>Froyle</b>	<b>Morning Worship &amp; Messy Church</b>
	11.00am	Kingsley	Holy Communion
Sun 28 Sep	9.30am	Bentley	Holy Communion & Children's Church
	11.00am	Binsted	Morning Worship
	<b>6.30pm</b>	<b>Froyle</b>	<b>Choral Evensong</b>

## THE VIEW FROM THE VICARAGE

A class of children were once asked to write a question they wanted to ask God.

Kevin wrote, "Dear God, Did you mean for giraffes to look like that, or was it an accident?" Jane wrote, "Dear God, In Sunday School they told us what you do for a job. Who does it when you are on holiday?"

One of the greatest privileges we have as a parish is the work we do with both primary schools, our Children's church and Messy Church. Helping children to explore their spirituality and to provide space for their questions is so rewarding.

We all have questions. If you could ask God something, what would it be? I'm sure that most would begin with the word, "Why?" Often these questions arise out of our deepest hurts, losing a loved one, a devastating illness, loss of a job. We might even be prepared to ask these of God in our prayers. The problem is that such deep questions are not often answered swiftly or clearly. We have to live with them, sometimes for our whole lives. We are not guaranteed in this life, that we will understand everything or have everything neatly boxed away and resolved. Our souls hurt with the pain of these questions and God's answers seem enigmatic at best. What are we to make of this?

Jesus's disciples had huge questions when they witnessed his crucifixion and death. Two of them were walking and seeking to make sense of things, when they are joined by someone else on the road who asks why they are so upset? They reply, "Jesus was a mighty teacher, highly regarded by both God and the people. But our leading priests and other religious leaders arrested him and handed him over to be condemned to death, and they crucified him." Luke 24:19-20. The other person then takes them through the Bible to explain why the Messiah had to die. He answers their questions and "Their hearts were warmed." They finally realise that they are talking to Jesus himself, that he is alive again.

God treasures our questions. They force us to consider bigger things than we usually think about. Life, death, the meaning of both. They can awaken in us a soul hunger for something true and which gives us the strength to carry on. In short, they can bring us to him. In this life God does not promise to explain himself in every way. He does promise that in eternity, he will. His answer to us as we wrestle is not with facts, but with the challenge to put our faith in him. Jesus says, "Do not let your hearts be troubled, Trust in God and trust also in me. In my Father's house there are many rooms and I go to prepare a place for you."

The place for answers is not while we are still struggling to get through life. While we are still fighting against evil. While we are distracted by duties and all the stuff of life. The place for answers is at journey's end. When we are safe from the storm, sitting by a roaring fire with a drink in our hand and where we can rest from the arduous journey. The place for answers is in God's presence, in his home (and ours)

and when we are surrounded and filled with his love.

In the meantime, we are told to trust. To hold on to God despite and because of everything. This is what faith means. It is a vicelike grip on God, a refusal to settle for platitudes and easy answers. It is a longing for the time when our hearts too will be warmed as everything is revealed. Faith sounds so weak in English, but it is an act of supreme will, of complete trust and a knowledge that with God, we are ultimately safe. Mark Twain said “the two greatest dates in our lives are the day we are born, and the day we discover why.”

*Matt Boyes, Rector of Bentley, Binsted and Froyle*

---

## **St Mary's News**

As so many do, the church had a reduced schedule over July and August. We gathered just twice in July, once for the annual pet service on the recreation ground. It was pleasant as always, with a variety of animals in our congregation including a ferret and a horse. Froyle got a big slice of the pie in August with three services rather than the one each held elsewhere in the benefice. This was because of the evening services continuing uninterrupted as usual as well as it being a five Sunday month, with the extra, fifth, service of the month held in Froyle.

In September, the service schedule starts to return to normal, but with exceptions. One is that Sunday 14 September is 'Holy Cross Day', when we also celebrate the restoration of Binsted church. The only service in the benefice that week is in Binsted at 11.00am.

This year, Froyle Harvest Supper is on Friday 19 September in the Village Hall (see below, and page 8). Our Harvest Service is on 21 September at **9.15am**: there will be croissants, bacon rolls and coffee to start; it will include Messy Church; and the christening of Otto Hatcher Mills, so a significant and cheery village event. See the poster on the facing page.

*Jack Stephenson, Churchwarden*

---

## **Harvest at St Mary's**

Do join us for the annual Harvest Supper on Friday 19 September at 7.00 for 7.30pm. Tickets are available from Jenny Gove: [govejenny@gmail.com](mailto:govejenny@gmail.com) or Gill Bradley: 01420 520484. Adults £12 Children half price.

Please join us on Saturday 20 September to decorate the church - fruit and vegetables and any suitable flowers will be most welcome. We would also welcome donations for the Food Bank.

Many thanks.

*Froyle Community Group*





# Sunday 21<sup>st</sup> September

Froyle Church

9:15am – change of time!

Breakfast included!

**FREE**



**Decorate a Sukkah**



We are moving the time of Messy Church for September to link in with our harvest celebrations taking place in the morning. These include decorating a Sukkah (see above!), family activities, a tractor display, a baptism, and a short service.

We will start with breakfast, serving bacon baps, croissants, and coffee from 9.15 am and go from there.

So something for all ages – do come along – if only to find out more about what a Sukkah is...

For questions or offers of help, please contact a member of the Froyle Messy Church team: William Knowles (23164), Jane Macnabb (23195) or Sarah Roberts (520041).

# **FROYLE HARVEST SUPPER**

***EVERYONE WELCOME***

**FRIDAY 19<sup>TH</sup>  
SEPTEMBER  
2025**

**7 PM  
FOR  
7.30 PM**

**FROYLE  
VILLAGE  
HALL**

**ADULTS  
£12  
CHILDREN  
£6**



**For Tickets please contact:**

**Gill Bradley,  
Jenny Gove,**

**01420 520484**

**[govejenny@gmail.com](mailto:govejenny@gmail.com)**

## The Real Nativity, Froyle 2025

For many years Binsted has hosted a Christmas event known as the Real Nativity: a simple reenactment of the birth of Christ in Bethlehem 2025 years ago.

In Binsted the event moves around the village, from the Angel Gabriel appearing on the recreation ground, moving to The Binsted Inn (the Innkeeper isn't very accommodating...) and finishing in the church with a couple of carols and some delicious refreshments. It takes about an hour, and everyone has a fine time. Shepherds, sheep, donkeys and burning braziers all go into making it a seasonal spectacle.

To give the Binsted team a rest and to mark the change of Froyle becoming part of a Single Parish with Bentley, Binsted, Kingsley and Oakhanger, The Real Nativity is coming to Upper Froyle this year.

We have plans to make it a special evening. Do come and be part of the action, bring family and friends. Children really enjoy the occasion. We're expecting the Angel Gabriel to appear somewhere in the vicinity of Froyle Park at 6pm on 23 December. Mark it in your diaries now. Standby. More next month.

*Nigel Southern*



**To start you thinking!  
Christmas Tree Festival 2025**



St Mary's Church, Froyle is planning to host a Christmas Tree festival this year. We are looking for Froyle residents (and external contributors) to join in the fun by decorating a small Christmas Tree which will be displayed in the church over the Christmas period. There will be a few rules (size etc) but ultimately we are looking for you to have fun and use your imagination. Further details on how to get involved will be in the next magazine.

***We need your participation and imagination!!!!***



# UPAGEAR

## Youth group

School years 7+

A welcoming and fun space for young people to gather,  
to build friendships,  
and explore Christian faith and values with significant snacks!

5–6:30pm, Thursday evenings  
(fortnightly)

Starting Thursday 18<sup>th</sup> September

[admin@benbinfro.org](mailto:admin@benbinfro.org)

## four: twelve

YOUTH CLUB



**WHO?** OPEN TO YOUNG PEOPLE IN SCHOOL YEARS 4–6.

**WHEN?** FRIDAY 12TH SEPTEMBER, 5 – 6:30PM.  
FRIDAY 26TH SEPTEMBER, 5–6:30PM.

**WHERE?** BENTLEY SCHOOL SPORTS HALL.

**WHAT?** FUN & GAMES, SHORT BIBLE TEACHING, GROUP  
ACTIVITIES, TUCK SHOP.

[admin@benbinfro.org](mailto:admin@benbinfro.org)

1 Timothy 4:12 – “Do not let anyone treat you as if you are unimportant because you are young. Instead, be an example to the believers with your words, your actions, your love, your faith, and your pure life.”

# **CAR BOOT**



**SAT 25 OCTOBER**  
**9am - Noon**

sellers set up from 8:30am

**FROYLE REC & VILLAGE HALL**

**Sellers: £10/car £15/van**

**Buyers: £1/person**

Coffee, Tea, Cakes & Bacon Butties will be on offer!

**To support Bonfire Night  
and other Village Hall Events**

## September – even more happening at your local u3a!



Last year was definitely one to remember! We increased the number of groups to nearly 75, a 20% increase as our membership rose to over 840. This meant we could keep up with demand without restricting existing group sizes for our members. We introduced two new areas for us, Modern Languages and Group Events. In addition to our traditional trips to see Matthew Bourne's 'The Red Shoes' and the Royal Philharmonic Orchestra's Christmas Cracker our new Events Team is arranging regular treats including quizzes, theatre evenings and even a murder mystery cruise.



Looking forward we are hoping to develop another new area, Health and Wellbeing as well as welcoming even more new groups such as Chess and Flower Arranging. Some groups are also splitting to increase capacity such as table tennis, which is now starting a third group.

Our annual **Members' Open Day, in August** was incredibly popular. Hundreds of our members, plus many of their friends, made their way to Robert May's School where more than 60 groups exhibited, explaining what makes their group special. As usual the stars of the show were the refreshments – the delicious cakes, the welcoming atmosphere and the easy chatter of members coming together for a catch-up!

### And so to September

As all our activity groups rev up for action, our first monthly meeting, September 3<sup>rd</sup>, is a talk by author **Philip Caine – Barrow to Baghdad & Back Again**. Philip explains how he came to write his factitious adventure / thriller novels (currently 7) all inspired by his ten years in the Middle East. Our guest talks take place on the first Wednesday of the month at the Cross Barn in Odiham.

To see the full programme of our Monthly Meetings and timetabled activities, please visit our website.

[www.odihamu3a.org.uk](http://www.odihamu3a.org.uk)





## ALTON FOOD BANK PLEASE SUPPORT

Thank you for your continued support for the Alton Foodbank. Your generous donations have enabled it to meet the growing demands which it is seeing locally.

Please continue to support this amazing charity; it is particularly in need of the following items at the moment:

Tinned vegetables	Tinned potatoes
Rice (dry)	Sponge puddings (long life)
Tinned custard	Tinned meat (pies, stewing steak, hot dogs)
Tinned rice pudding	UHT milk
Bags of sugar	Antibacterial cleaning spray
Toilet rolls	Washing up liquid
Shower gel	Sanitary products
Conditioner	Shampoo

There is a donation box in the Village Hall, or you can drop off at Greenfields Cottage, Lower Froyle. There are also collection points in Bentley and Binsted churches, and at Alton Maltings where there is a drop box outside the main door.

If you have any queries, please call me.

*Louise Marston*  
*07885 350381*

---

### **Local Handyman Services**

*Reliable handyman for help with all those jobs around your Home and Garden*



*I am Chris Marston and I have lived in Froyle for many years.  
If you need some help with your **Home** or **Garden** maintenance,  
call me on **07764 255 419** to arrange a no-obligation quote.*

**Outside** - Hedge cutting, strimming, shed refurbishment, raised bed building, pergola design and build, garden gate fix

**Inside** -Curtain poles, flat pack assembly, shelving, minor repairs/plaster work and painting/decoration

*Local References available and fully insured*





SEPT

Froyle raised, grass finished  
beef becomes available.  
GO TO [aion.farm](http://aion.farm)  
to preorder

Your local produce

**15% off**  
**for Froyle residents**

Grass Raised & Finished

Local Froyle Raised

[www.aion.farm](http://www.aion.farm)

USE CODE: "Froyle"

"Enter 'Froyle' at checkout and  
get 15% off your total order on  
beef and lamb



Selective steaks on request. Email [posture@aion.farm](mailto:posture@aion.farm) for requests.

**[www.aion.farm](http://www.aion.farm)**

✓ Grass Raised ✓ Grass Finished ✓ Local Produce ✓ Ethical & Sustainable



**SOPHIE HANDA**  
REIKI ENERGY HEALING

FOR FURTHER INFORMATION OR TO BOOK A TREATMENT, GET IN TOUCH

[www.sophiehandareiki.co.uk](http://www.sophiehandareiki.co.uk)

[sophiehandareiki@gmail.com](mailto:sophiehandareiki@gmail.com)

tel: 07857 861009

# Waverley Singers

Sunday 26 October 2025, 6pm

Farnham Maltings, GU9 7QR

# Opera Gala

Soprano - Nina Bennet

Tenor - Robin Bailey

Piano - Jakob Rothoff

Conductor - Richard Pearce



Tickets: in advance/on the door

Premium £20/£22 General £18/£20

[ticketsource.co.uk/waverleysingers](https://ticketsource.co.uk/waverleysingers)



Retiring collection in aid of Phyllis Tuckwell

[waverleysingers.com](https://waverleysingers.com)



# BUD HUT

## LUXURY FLORIST



### FOR ALL YOUR FLOWER NEEDS

BOUQUETS

FAREWELL  
FLOWERS

WEDDINGS

SUBSCRIPTIONS

PRIVATE &  
CORPORATE  
EVENT FLORALS

FLORAL  
WORKSHOPS

### DELIVERY & COLLECTION AVAILABLE

MILL FARM ORGANIC, ISINGTON

[WWW.THEBUDHUT.CO.UK](http://WWW.THEBUDHUT.CO.UK)

EMAIL: [INFO@THEBUDHUT.CO.UK](mailto:INFO@THEBUDHUT.CO.UK)  
TELEPHONE: 01420 551 316



# FLORENCE

## *The Barn & Coffee Shop*

*A local independent store offering a curated selection of homeware, clothing, and coffee.  
Thoughtfully chosen pieces, a cosy café, and a warm welcome.*

### OPEN HOURS

SATURDAY 9AM-5:30 PM & SUNDAY 9:30AM-5:00PM


🐔 Hen & Chicken Pub

Upper Froyle, Alton, GU34 4H

*Follow our instagram for more updates @shopflorenceclothing*

*Email us - [shopflorenceclothing@gmail.com](mailto:shopflorenceclothing@gmail.com)*

*We look forward to seeing you!*



## What's On at The Anchor Inn

Thursday 4<sup>th</sup> Sept at 7.30pm

### Monthly Quiz Night

Free entry. Max 6 people per team. Prizes to be won



Saturday 6<sup>th</sup> Sept from midday

### End of Summer Garden Party

BBQ, Live music, face painting, Pizzas...and lots of fun!

Thursday 11<sup>th</sup> Sept at 7.30pm

### Monthly Bingo Night

£2 per game, 3 games played each night. Cash prizes to be won

Thursday 16<sup>th</sup> Oct from 7pm

### Foods of the world Supper Club

3 course meal at £40 per person.  
Book your table today

Thursday 27<sup>th</sup> Nov at 7.30pm

### Winter Gin, Spritz & Cocktail Masterclass

More details to follow. Ticketed event.



**athertongreenart**  
Creating vibrant contemporary collections

Be inspired by our unique collection of contemporary art including paintings, prints, sculptures and ceramics by a selection of artists in our gallery at Farrington Place.

**Open by appointment**

**Art Gallery:** Atherton Green Art is situated in a lovely Victorian home in the village of Farrington in Hampshire and brings the exciting talents of a select group of emerging and mid career artists to collectors and new buyers of art.

*'Whether you want to start a collection, build a collection or commission a piece of art, we are here to help'*

Work is available online at [www.athertongreen.art](http://www.athertongreen.art)

Farrington Place  
Church Road, Upper  
Farrington, Alton,  
Hampshire, GU34 3EH  
+44 (0) 7890 098 036  
[sue@athertongreen.art](mailto:sue@athertongreen.art)  
[@athertongmart](https://www.instagram.com/athertongmart)

The Beehive Montessori pre-school.  
Settings in the villages of Shalden and Lindford  
Providing high quality education in a nurturing environment  
with experienced staff.



Funding for 2, 3 and 4 years available.  
For further information call Annette or Jan 07795 270184  
or join our Facebook pages.  
[www.beehive-alton.co.uk](http://www.beehive-alton.co.uk)





## ACORNS B&B



Acorns is a self-contained guest cottage, located in the picturesque village of Lower Froyle.

It has its own entrance, parking, and a south facing private terrace which offers beautiful views across open fields.

There is a generous bedroom with a super-king sized bed (two singles can be arranged on request), comfortable sitting room, together with a small but very well-equipped kitchen and a luxury shower room.

Fresh bread and milk, juices, jams, cereals and yoghurts will be provided for your breakfast along with a selection of teas and coffees.

Consistently awarded 'guest favourite' on Airbnb.

Contact Alice for further information on  
07768 165233 or [ghins@ghins.com](mailto:ghins@ghins.com)  
Instagram @acornsbnb



## Move with Tegan

Froyle Village Hall  
Ryebridge Lane, Lower  
Froyle, Alton GU34  
4LG

## Pilates in Froyle

### Monday

10-11 Dynamic Pilates

11-12 Gentle Pilates

### Wednesday

Mixed Pilates

18:30-19:30

For bookings, contact Tegan on  
07761209998 or email  
[teganhansensa@gmail.com](mailto:teganhansensa@gmail.com).

£10 per Pilates Class  
£50 for block of 6 classes



Made-to-Measure Curtains, Blinds, Upholstery  
Interior Design  
Concept to Completion Service  
Extensions, Conversions & New Builds

Scan to book  
your FREE  
design  
consultation




## AWARD-WINNING INTERIOR DESIGN

*On Your Doorstep*



Over 30 years  
experience!



Award-winning  
customer service



Inspirational  
designs



[www.renaissanceinteriorshw.co.uk](http://www.renaissanceinteriorshw.co.uk)

hello@renaissanceinteriorshw.co.uk 01252 220 400

Virginia Villas, High Street, Hartley Wintney, Hampshire, RG27 8NW





**Trenbo's**

Handyman - Electrical - Maintenance

*07376908787*  
*trenbosjobs@gmail.com*

# Fine Framing

Picture Framers

4 Weyside Park Newman Lane

Alton GU34 2PJ

Tel: 01420 82324

Email: [info@fine-framing.co.uk](mailto:info@fine-framing.co.uk)

Opening Times:

Tuesday-Friday 9.30am-5.00pm

Saturday 10.00am-12 noon

Closed Monday



**DOWNIE &  
GADBAN**

Solicitors & Notary Public

Est. 1905



**Residential Conveyancing - Wills - Power of  
Attorney - Probate - Commercial Property -  
Property Development - Dispute Resolution**

Instant conveyancing quotes available on our website  
[www.downieandgadban.co.uk](http://www.downieandgadban.co.uk)

**Why Choose Us?**

We pride ourselves on being friendly, approachable and professional. We have been in our current building at the end of the High Street in Alton (close to M&S, The Ivy House and The White Horse) since 1962 and have been serving generations of families in the Alton area since 1905.

*To discuss how any of our team could help you please give us a call and we will be happy to discuss your requirements.*

**Tel: 01420 82879**

**Email: [info@downieandgadban.co.uk](mailto:info@downieandgadban.co.uk)**

**Website: [www.downieandgadban.co.uk](http://www.downieandgadban.co.uk)**

## Andrew Wood

Heating and Plumbing Engineer



Gas Safe No. 155316



- BOILER CHANGES
- BOILER SERVICING
- POWER FLUSHING
- CENTRAL HEATING SYSTEMS
- GAS INSTALLATIONS
- GENERAL PLUMBING

For free estimates or advice telephone **Bentley (01420) 22637**

# Paul Pascall

Painter and Decorator

Estimates and References  
Available

**01252 328965 Evenings**

**07803 723530 Daytime**



## Accepting new patients

- General Dentistry
- Dental Emergencies
- Dental Implants
- Adult Orthodontics
- Teeth Whitening
- Sedation
- Dental Acupuncture

The Clinic is on the ground floor so is easily accessible. Free on-site parking also available.

For more information please visit our website or get in touch



# 01420 550616

Shine Dental Clinic, Unit: 10A Mansfield Business Park, Medshead, GU34 5PZ,  
[info@shinedentalclinic.co.uk](mailto:info@shinedentalclinic.co.uk)

## Advertising rates 2025/2026

For Froyle businesses: £40+VAT/year, £24+VAT/half year for advertisements of **up to half a page/a third of a page on inside covers.**

For non-Froyle businesses: £60+VAT/year, £36+VAT/half year for **up to half a page/a third of a page on inside covers.**

For both residents and non-residents: £120+VAT/year, £72+VAT/half year for a **full page, £137.50+VAT/year for inside cover full page.**

The advertising year begins with the April edition, and the half-year with either the April or October edition.

All advertising must be requested and paid for through the Parish Clerk at [froylemageditor@gmail.com](mailto:froylemageditor@gmail.com) and copied to [clerk@froyleparishcouncil.co.uk](mailto:clerk@froyleparishcouncil.co.uk).

We are pleased that local trades and service providers advertise with us and we do hope that you support them. However we do not check or endorse them in any way.

---

## NOTES TO CONTRIBUTORS

The magazine is published in A5 size, portrait orientation, both online and in print. The online version is in colour but the printed version is in black and white.

### Posters/Adverts

If you want a full page design your page in portrait layout. For half pages use landscape. You can send your copy in any size but it will be resized to fit on A5 portrait. To see how it will look is to design a full page as A5 portrait and a half page as A6 landscape.

Please submit artwork and copy as a JPG/PNG picture or PDF file, with, if available, the original Word or Powerpoint document and any photographs.

### Articles

Please send text and pictures separately as well as in your complete article. As a rough guide a page is about 500 words – with no pictures.

Pictures should be high resolution JPEG or PNG files.

### General

All magazine contributions should be submitted to [froylemageditor@gmail.com](mailto:froylemageditor@gmail.com). Please refer to the back cover for next month's magazine deadline.

In the event of any question over including or excluding any item or part of an item, or in relation to any other matter, the Editor's decision is final.

## Village Events September 2025

<i>Sunday</i>	<i>Monday</i>	<i>Tuesday</i>	<i>Wednesday</i>	<i>Thursday</i>	<i>Friday</i>	<i>Saturday</i>
	1 <i>Rubbish</i>	2	3	4 <i>Garden waste</i>	5 1000-1200 <i>Meeting place</i>	6 1000-1300 <i>Denpond clearing</i>
7  1600-1800 <i>Life drawing</i>	8 <i>Recycling &amp; glass</i>	9	10	11	12 1000-1200 <i>Meeting place</i> 1700 <i>Gardening Club Autumn Show</i>	13  1400 <i>Gardening Club Autumn Show</i>
14	15 <i>Rubbish</i>  1830 VH <i>Committee</i> 1900 FPC	16 1000-1200 <i>Life drawing</i>	17	18 <i>Garden waste</i>	19 1000-1200 <i>Meeting place</i>  1900 <i>Harvest Supper</i>	20
21 0915 <i>Harvest Service</i>	22 <i>Recycling &amp; glass</i>	23	24	25	26 1000-1200 <i>Meeting place</i>	27 1000-1200 <i>Wildlife pond maintenance</i>
28  1830 <i>Evensong</i>	29 <i>Rubbish</i>	30				





## PAX HILL

*Care home for the elderly*



Pax Hill provides person-centred care for Residential, Dementia, Nursing, and Palliative care needs in modern, comfortable accommodation.

Two purpose-built care homes are set in nine acres of beautiful gardens in the picturesque village of Bentley.

*For more information or to discuss your individual needs, please call Angela.*

01420 525882 | [mail@paxhill.co.uk](mailto:mail@paxhill.co.uk) | [www.paxhill.co.uk](http://www.paxhill.co.uk)



# Physiotherapy

In the centre of Bentley  
by

## Pippa Blizzard

Chartered Physiotherapist  
MCSP HCPC BAHT AACP

[physiotherapy@pippa-blizzard.co.uk](mailto:physiotherapy@pippa-blizzard.co.uk) 07714 239644 [www.pippa-blizzard.co.uk](http://www.pippa-blizzard.co.uk)



## SILVERWING CARS

Call Tony on 07971 859947

Reliable Professional Taxi Service  
Advanced Bookings Advised



## Froyle Directory

**Froyle Parish Council** ① [www.froyleparishcouncil.org.uk](http://www.froyleparishcouncil.org.uk)

Andrew Potter, Clerk ✉ [clerk@froyleparishcouncil.org.uk](mailto:clerk@froyleparishcouncil.org.uk) ☎ 07979 030571

**Froyle Residents Email List** email to join ✉ [clerk@froyleparishcouncil.org.uk](mailto:clerk@froyleparishcouncil.org.uk)

**East Hampshire District Council** [www.easthants.gov.uk](http://www.easthants.gov.uk)

Tony Costigan, District Councillor ✉ [tony.costigan@easthants.gov.uk](mailto:tony.costigan@easthants.gov.uk) ☎ 07770 666896

**Hampshire County Council** [www.hants.gov.uk](http://www.hants.gov.uk)

Mark Kemp-Gee, County Councillor ✉ [mark.kemp-gee@hants.gov.uk](mailto:mark.kemp-gee@hants.gov.uk) ☎ 07748 945947

**Froyle Village Hall** ① [www.froylevillagehall.co.uk](http://www.froylevillagehall.co.uk)

Chair: Gillian Paul: [chairman@froylevillagehall.co.uk](mailto:chairman@froylevillagehall.co.uk) ☎ 07774880885

Bookings: Sarah Zorab ✉ [bookings@froylevillagehall.co.uk](mailto:bookings@froylevillagehall.co.uk) ☎ 01420 520361

**The Meeting Place - Fridays 10-12 at the Village Hall** Susie Robertson ☎ 01420 520820

**Froyle Gardening Club** ① [www.froylegardeningclub.co.uk](http://www.froylegardeningclub.co.uk)

Geoff Hawkins ✉ [info@froylegardeningclub.co.uk](mailto:info@froylegardeningclub.co.uk) ☎ 01420 88176

**Froyle Wildlife** [www.froylewildlife.co.uk](http://www.froylewildlife.co.uk) - Barry Clark ☎ 01420 23520

**Tree Warden** Sue Lelliott ✉ [tree.warden@froyleparishcouncil.org.uk](mailto:tree.warden@froyleparishcouncil.org.uk) ☎ 01420 22015

**Neighbourhood Watch** ① Stephen Inskip ✉ [stephen.inskip22@gmail.com](mailto:stephen.inskip22@gmail.com) ☎ 07581 211595

**Speedwatch Group** Gordon Mitchell ✉ [champersg@hotmail.com](mailto:champersg@hotmail.com) ☎ 01420 23851

**Police Community Support Officers** ☎ 101

PC Alex Routt ✉ [alex.routt@hampshire.police.uk](mailto:alex.routt@hampshire.police.uk) or 07891 484 670

PC Jess Hornsby ✉ [jessica.hornsby@hampshire.police.uk](mailto:jessica.hornsby@hampshire.police.uk)

**Froyle Archive** [www.froyle.com/archive](http://www.froyle.com/archive)

**The Benefice of Bentley, Binsted & Froyle** ① [www.benbinfro.co.uk](http://www.benbinfro.co.uk)

Matt Boyes, Vicar - ✉ [matt@benbinfro.co.uk](mailto:matt@benbinfro.co.uk) ☎ 07469 270590

Sarah Roberts, Anna Friend - ✉ [sarahrfroyle@gmail.com](mailto:sarahrfroyle@gmail.com) ☎ 07831 294852

St Mary's Church Flower Rota - Gill Bradley ☎ 01420 520484

**Bentley, Binsted and Froyle Care Group** - Bookings ☎ 07775 458873

① Froyle on Facebook - Froyle Residents, Froyle Advertising

**Key:** ☎ Telephone ✉ Email ① Facebook ② WhatsApp

**OCTOBER DEADLINE: FRIDAY 19 SEPTEMBER 2025**

For Notes to Contributors, please see page 39.