

Froyle Village Magazine



February 2026

No 525

<https://www.froyleparishcouncil.org.uk/village-magazine>



TRAVEL WITH MEON

MEMORIES THAT LAST A LIFETIME



*Award-Winning Travel Agent
on your doorstep!*

Meon Valley Travel, 32 High Street, Petersfield, Hampshire GU32 3JL

Telephone: 01730 711010 | Email: leisure@meonvalleytravel.co.uk

www.meonvalleytravel.co.uk



News from the Parish Council (PC)

Parish Clerk - Andrew Potter

E: clerk@froyleparishcouncil.org.uk

W: www.froyleparishcouncil.org.uk



The PC met as scheduled on 12 January and was pleased to co-opt Robbie McRiley as a Parish Councillor until he leaves for university in the Autumn. Robbie will provide greater diversity to the PC and bring a younger person's perspective. A number of residents joined the meeting expressing a particular interest in the consultation process for the Rec project and the Chair invited attendees to comment during the discussion on this topic. Thanks were expressed to Chris Marston for repairing the Manderley noticeboard door.

The main business for the meeting was to sign off the budget for 2026/27 and provide an update on the Rec facilities upgrade project. Signing off the 2026/27 budget includes setting the precept, which is the amount collected as part of residents' Council Tax and paid to the PC for its ongoing costs. The PC had provisionally agreed that the precept would include a 3% increase over 2025/26 but was subsequently advised by EHDC that the number of properties in the village has been reduced for 2026/27 resulting in the precept being spread over fewer households. As a result, the actual increase for each Band D household in Froyle is now estimated to be c.6% or c.£0.40 per month (the increase for households in other bands will be proportionately more or less). The PC agreed that no change would be made to the 3% increase to the precept it was requesting as a result of this reduction in the tax base.

The next phase of feedback on the Rec facilities has commenced with the issue of a questionnaire. This can be completed online at <http://www.froyleparishcouncil.org.uk/rec> with paper copies available from the Clerk. The questionnaire is designed to find out which parts of the Rec, both now and future, are most important to the village community. The project team is keen to stress that the facilities being suggested are designed to benefit all age groups in the village including the 15% with mobility issues. Please provide your views on how you consider the whole community could benefit from the upgraded facilities not just whether they would be important to you as an individual. It is important to hear from as many residents as possible and of all age groups so please do encourage all family members of your household (grandchildren welcome too) to submit a response. The results will be discussed with a designer specialising in community facilities and a number of concepts produced. These will be costed and presented to residents to determine which of the items will be most valued by the community. The feedback will be used to guide a final design for grant applications.

Following his appointment to the PC with responsibility for footpaths, Phil Roberts has received several comments from residents on issues with our extensive network of footpaths. A work plan is being developed in conjunction with landowners, and a regular footpath update will be included in the magazine. Volunteers from Alton Ramblers carry out minor repair and upgrade work while HCC's Countryside Rangers undertake larger projects such as the construction of

the new footbridge on St Swithun's Way that was installed in early December – the PC is grateful to Mrs Dundas for providing access across her land to undertake this work. Please email Phil (phil.roberts@froyleparishcouncil.org.uk) if you have any footpath matters to report or would volunteer to help monitor the paths.

Bruce Powell of the A31 Alliance made a presentation to a public meeting on Monday 15 December about the "Save Jane Austen Country" campaign which is being organised by the A31 Alliance against the proposed development of 12,000 houses along the A31 corridor between Bentley and Ropley (including up to 155 in Froyle). Bruce's presentation has been made available to residents and can be found on the PC website. Please do consider whether to support the campaign by signing the petition on the website www.savejaneaustencountry.org, or by contacting your District Councillor and local MP to protest about the process being followed by EHDC which does not include any plans for public consultation.

The PC considers all planning applications in Froyle. In the last month it has reviewed and commented on revised proposals for the c.160 house development in Holybourne, and two householder applications in Froyle. The PC is meeting with the owner of the land on H&C Hill to discuss the application that has been submitted for two new houses and to better understand their plans for the entire field to the A31 junction which is included in the latest EHDC "Land Availability Assessment".

And finally a comment about the Village Hall car park. The PC would remind residents that this is **not** a public car park and if a resident wishes to park there for an extended period, then permission **must** be sought from the PC in advance.

The next PC meeting will be held on Monday 16 February @ 19.00 in the Village Hall and all members of the public are welcome to attend. Any resident can request an item be included on the agenda by advising the Clerk 5 days in advance of the meeting.

As always, don't forget to visit the Village website www.froyleparishcouncil.org.uk to find out news, information about activities in and around Froyle, the village calendar, and useful contacts. There are over 200 residents signed up to the Froyle Residents' email distribution list who receive info about current village matters e.g. bin collection date changes, road closures etc. If you wish to join (or leave) please advise the Clerk.

SHAPING YOUR FUTURE RECREATION GROUND

The Parish Council are looking to improve the facilities on the Rec for everyone.

Please give your feedback by filling in the questionnaire



Scan the QR code
or visit

www.froyleparishcouncil.org.uk to
take part.

If you want to feedback another
way, please contact the clerk:
clerk@froyleparishcouncil.org.uk
or call 07979 030571





Bookings:
Sarah Zorab
01420 520361

www.froylevillagehall.co.uk

December was festive at the Hall. The Meeting Place decorated the Lobby, threw a jolly Christmas party, and held their annual Christmas Raffle which raised £223 for the Winchester Beacon Homeless Shelter. The outside of the hall was decorated with a tree donated by the Froyle Estate and lights put up by David Robertson, Royston Annible, and Wendy Munt. All helped inspire a warm glow for the festive period and remind us of the joy of living in Froyle.

Sadly, the new year brought with it the news that Royston Annible and Toby Fay have decided to step down from the Committee. They both have served long terms on the committee and we extend our heartfelt thanks for all they have done for the Village Hall over the years.

The good news is that 2026 will see the return of the Froyle Art Fair in May, the Fete in July, the coveted Safari Supper in September, Quiz Night in October, and Bonfire Night in November. Watch this space for more details through the year, and we hope you will plan to join us.

New for 2026 will be a fun run in April. There will be both a 10k Trail Run for teens and adults and a Color Run for kids around the rec. If your new year's resolution involved dusting down your trainers and getting out for a run then now you have an incentive to keep going! Details next month.

We are keen to continue to increase usage of the hall. We have lowered our weekday hourly rate to just £15, and are actively looking to sponsor new clubs, classes or regular social gatherings. If you have an idea please do get in touch.

Prizes for the 100 Club are now double what they were last year. If you are not already a member, now would be a good time to join! All money raised goes to support the Village Hall. Please contact William Knowles, 07775 928933 or wbk@wbknowles.com, for more information or to sign up.

Gillian Paul

February Activities

Dynamic Pilates **Mondays 2, 9, 23 Feb** **9:30 – 10:30am**

Gentle Pilates **Mondays 2, 9, 23 Feb** **10:30 – 11:30am**

Move with Tegan. £10 per class, £50 for a block of 6. For bookings or more information contact Tegan on 07761209998 or teganhansensa@gmail.com

Life Drawing **Sunday 1 Feb** **4-6pm**

Tuesday 10 Feb **10am - Noon**

Untutored, but beginners welcome. Bring your own materials.
£10 cash at the door. Note that this month we'll meet on the 2nd Tuesday.
dabirn@gmail.com for more information or to rsvp.

Meeting Place **Fridays 6. 13, 20, 27 Feb** **10am - Noon**

Join us for delicious homemade cakes, hot drinks and good conversation.
There are books and jigsaws to borrow, and you can learn to crochet if you'd like. Everyone welcome.

Gardening Club **Wednesday 11 Feb** **7:30pm**

Sir Harold Hillier Gardens Through The Year with David Jewell. Everyone is welcome to come to this inspiring talk.
Froyle Garden Club members free, visitors £3 on the door.

Parish Council **Monday 16 Feb** **7pm**

Agenda: <https://www.froyleparishcouncil.org.uk/your-council/agendas-and-minutes>
Members of the public are welcome to attend and comment on all items on the agenda identified as 'For Residents' or make representations regarding other concerns they may wish to bring to the Council's attention

Fun Science **Tues 17 & Thurs 19 Feb** **8:30am-4:30pm**
Holiday Club

Science based holiday club for primary school age children.
alton@fun-science.org.uk

Wildlife Club **Friday 27 Feb** **7pm**

Amphibians: find out how to identify them and why ponds are so important for more species than just newts and frogs.
All welcome. Froyle Wildlife members free, non-members £3. Teas and coffees. Doors open 7pm for talk to start 7.30pm.



The Meeting Place

The Meeting Place takes place every Friday morning in the Village Hall from 10am- 12 noon, so do come and join us for delicious home made cake, hot drinks and good conversation. We also have an ever changing selection of books and jigsaws

to borrow.

February Kitchen Helpers

(No need to be at the Hall till 10.00am)

6th	Roger and Linda Cooper
13th	Caroline Findlay
20th	Jane Macnabb
27th	Caroline Wilkinson

Please organise swaps amongst yourselves, but do contact us if necessary.

February Cake Bakers

6th	Sue Carr	Laura Ozelyte	Kate Skerrett
13th	Alison Lopes	Louse Marston	Ali Malone
20th	Cherida Cannon	Susie Robertson	Jane Stewart Smith
27th	Sarah Roberts	Madeleine Black	Charlotte Inskip

We try to remind the bakers, but please do let us know if you can't bake for any reason. It's also helpful to know what cakes are coming, just so we don't get three of the same variety!

Cakes can be left in the porch at Wykeham House, Lower Froyle, on Thursdays or bring to the hall after 9.30am on Fridays.

Gill Bradley 520484
gahbradley@gmail.com

Susie Robertson 520820
sjrinfroyle@gmail.com

Jenny Gove 23697
govejenny@gmail.com

FROYLE 100 CLUB – DECEMBER AND JANUARY DRAWS

The winners in the December 2025 draw were:

- | | |
|-----------------|--------------|
| 1 st | Mary Knowles |
| 2 nd | Ian Whitmore |
| 3 rd | Jan Elliott |
| 4 th | Roz Packett |

We postponed the first (January) draw for 2026 until the last Friday in, January 30 – so after this magazine has gone to press. Well done all of you who changed your standing orders to accommodate the increased amount and those of you who switched from cash to bank transfer – really, really helpful of you all! However, it is also helpful for us to have the January weeks to sort everyone out so that we know exactly how much we have in the kitty and therefore how much prize money we have to dispense!! This will be revealed at the Meeting Place on 30 January.....

So well done everyone!

William Knowles

Tel: 07775 928933, email: wbk@wbknowles.com

LENT SOUP LUNCHES 2026



Easter is early this year, so our first soup lunch on Ash Wednesday is February 18th. They continue thereafter on each Wednesday for a further 5 weeks. They comprise homemade soup, bread and cheese and all donations go to the charity chosen by the host/hostess. All lunches run from 12.30 to 2pm.

February 18th: Susie Robertson, Wykeham House LF; in aid of Hounds for Heroes

February 25th: Jane Macnabb, Copse Hill Farm, LF; in aid of Treloars

March 4th: Alex Roberts, Froyle Cottage UF; in aid of the Stroke Association

March 11th: Nigel Southern, Aldersey Cottage, LF; in aid of Binsted Vicarage, School and Community Garden

March 18th: Sarah Zorab, Old Court, UF; in aid of Royal Osteoporosis Society

March 25th ; Gillian Pickering, Warren Cottage, LF; in aid of the Stroke Society

If anyone has any questions or needs directions to a particular venue, do get in touch.

Jenny Gove
govejenny@gmail.com



Froyle Gardening Club

FEBRUARY

From the Potting Shed

The study of the timing of biological events is called phenology, focusing on recurring life-cycle events like flowering. For most of us in the garden it will be the first snowdrops. Mine are now at least two to three weeks earlier. For others it will be frogspawn to look out for. It is changes in these events that make it difficult to decide when the jobs in the garden should be done by. Should we be sowing, pruning and getting onto the garden earlier? Sowing can be done earlier, especially if you have a heated propagator and greenhouse/conservatory. Pruning can be done when the weather is right to get onto the soil. So, I would step back, check the weather, if it looks OK for the next week or so then get out on those good days. Some plants like acers, silver birch and vines need to be pruned as soon as possible in the winter as they can bleed (ooze sap) and infections can then get into the plant.

In the veg department we have leeks, parsnips along with brassicas still available to pick. But we must get going for the following season by sowing broad beans, peas, getting onion sets and garlic started to be planted out when conditions are suitable.

Are you going to try something new this year? A new veg, or variety or new system in the garden. Let us know how it goes, the club is also for sharing information.

Geoff Hawkins

January New Year Party

The second Saturday of the month saw FGC hold its first activity of 2026, the New Year Party.

Over 40 members and friends enjoyed a lovely social afternoon. What could have been better – good food, some wine, lots of sociable people and a quiz? Well done everyone.

Now come and enjoy our first talk in 2026 by David Jewell.

February Wednesday 11th 7.30 pm – Sir Harold Hillier Gardens Through The Year with David Jewell.

Last September, after 15 years, David Jewell retired from his role as Curator of Sir Harold Hillier Gardens. He is a regular contributor to the RHS Garden Journal and was the Floral Superintendent at RHS Wisley. The depth of his knowledge and the vision of his planting will be an inspiring start to the gardening year.

Remember Froyle Gardening Club night is now on the second Wednesday of the month at 7.30pm. Everyone is welcome – you can join the Froyle Garden Club for the whole year for £10 or you can pay £3 on the door to come to the talk.

Flower Arranging Class

Anne Blunt will be running a flower arranging class on Wednesday 18 March between 2.00pm and 4.00pm in Froyle Village Hall.

She will demonstrate how to achieve a beautiful arrangement and will give advice and encouragement to enter an exhibit in the Gardening Club's Spring Show on 28 March. Everyone is welcome, whether a gardening club member or not, the cost is £5.00 payable on the day.

Please can you let Barbara Wheatley know by 4 March if you would like to come.

barbara@thewheatleys.co.uk



ALTON FOOD BANK PLEASE SUPPORT

Thank you for your continued support to the Alton Foodbank. Your generous donations have enabled it to meet the growing demands which it is seeing locally.

Please continue to support this amazing charity; it is particularly in need of the following items at the moment:

Tinned vegetables	Tinned meat
Rice (dry)	Sponge puddings (long life)
Tinned custard	Tinned meat (pies, stewing steak, hot dogs)
Tinned rice pudding	UHT milk
Bags of sugar	Antibacterial cleaning spray
Toilet rolls	Washing up liquid
Shower gel	Sanitary products
Jam	Peanut butter

There is a donation box in the Village Hall, or you can drop off at the collection points in Bentley and Binsted churches, and at Alton Maltings where there is a drop box outside the main door.

If you have any queries, please call me.

Louise Marston



FROYLE WILDLIFE

Amphibian and Reptile talk - Friday 27 February 7.30pm

Join us for a talk by Pete West about the volunteer conservation work carried out by the Hampshire and Isle of Wight Amphibian and Reptile Group (HIWARG) with a special focus on Froyle and surrounding areas. We will be looking at the eleven species known to be in the area (including at least two non-native species), the surveys we have carried out and key target species we are monitoring.



Male and female adders soon after emerging from hibernation

All welcome, Froyle Wildlife members free, non-members £3, teas and coffees, doors open 7pm for talk to start 7.30pm, Friday 27 February at Froyle Village Hall.

Dates for your diary

Talk about Swifts by Catherine Gale, Thursday 20 March 7.30pm Froyle Village Hall.

The Willow dome on Froyle rec needs your help for it's annual 'haircut' on Sunday 1 March, 10am.

Barry Clark

'Beaver and Water Vole Reintroduction' talk

David Elliot, a Lead Ranger with the National Trust, joined us in the village hall last November to talk about the lives of beavers and water voles and their reintroduction into the landscape, both locally and across the country.

David set the scene by reminding us that wildlife in the UK is struggling, with insects reducing by a massive 60% over the last few years and one in six species are at risk of extinction. The main two drivers for this are agricultural change and climate change.

A water vole's lifespan is about 12 – 18 months, they have 4-5 litters a year and are vegetarian, eating reeds, grasses, rushes and sedges. Female territories are

roughly 20-30 metres wide with males overlapping several females. Water vole numbers have been decimated over the last 50 years. Unfortunately, water voles have a variety of predators, but the primary culprit for their disappearance is the North American Mink.



Water Vole

The River Wey Water Vole Recovery Programme is aiming to address the disastrous 90% decline in water voles in the River Wey catchment area (indeed a recent assessment considered the water vole extinct in the area). The programme is following the approach of an initiative in East Anglia which has resulted in a very successful water vole reintroduction. It is being achieved by the placement of 89 traps across the Wey network which have so far captured and removed 107 mink across the catchment. It is soon expecting to have eradicated all mink from the River Wey. So far, the programme has reintroduced 192 water voles in sibling groups across 6 sites between Haslemere and Liphook.

Monitoring will take place next year to assess how the water vole population is doing and to determine any further reintroductions.

Beavers have not been around in the UK for roughly 200 years because humans killed them. They are a large riparian mammal with a vegetarian diet, the size of a labrador, and a lifespan typically of 8-9 years but can reach 11-12 years. They breed late Autumn/early Winter with young born in Spring. Their predators include bears, wolves and (historically) humans. Beavers are now coming back across Europe, within the UK a small recent introduction in the South Downs area following a successful pilot introduction on Exmoor in 2020.

Beavers are well known for building dams in river headwaters, creating wetland areas which provides a safe habitat for themselves. However, this also provides a beneficial environment for other native wildlife species, while reducing flooding risk further downstream by effectively 'storing' water and reducing the water flow. They are also earth movers and canal creators, again with beneficial flood risk effects. Beavers fell trees providing a food source for themselves as well as building materials for their lodges and dams. Fortunately, they fell only a few trees within each area, so they don't create treeless landscapes.

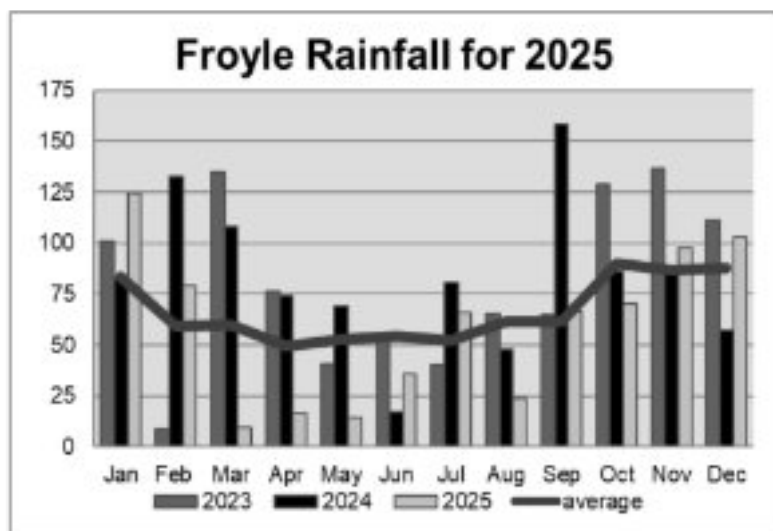
Admittedly, depending on the location, beaver's construction activities may not always desirable, but mitigation measures are available to us, such as water pipe installations to address any issues such as controlling water levels when necessary.

Alan Dyos

Froyle Rainfall for November and December, 2025 and for the whole of 2025

	November		December	
This year	97.5 mm	3.8 ins	103 mm	4.1 ins
Last year	88.5 mm	3.5 ins	57 mm	2.2 ins
Wettest (2009)/(1989)	198.5 mm	7.8 ins	167 mm	6.6 ins
Driest (2021)/(1988)	13 mm	0.5 ins	17 mm	0.7 ins
Monthly long-term averages	86.8 mm	3.4 ins	87.6 mm	3.4 ins
Total rainfall for the year			706 mm	27.8 ins
Annual long-term average			797.7 mm	31.4 ins

(the 3rd and 2nd wettest months, but 1st and 3rd on a per diem basis)



November continues to be the least predictable month - it has the highest standard deviation; December on the other hand is one of the more predictable months. And overall, in 2025, we had the lowest annual rainfall since 2011, around 30% lower than for 2024, mainly because H1 was well down on the long-term average.

And looking to 2026, January is gradually getting more predictable. February and March less so; I therefore predict lots of weather all over Froyle in the coming months...



"The Umbrella Man"

FIREWALK FOR CANCER SUPPORT



Wessex Cancer Support are holding a fundraising Firewalk on Thursday 26 March from 6pm at the Solent Hotel & Spa, Whiteley. The 2025 Fire Walk raised more than £12,000 to provide free counselling, wellbeing services, complementary therapies, support groups and courses for people affected by cancer across Dorset, Hampshire and the Isle of Wight.

In the charity's 45th year, a new team of Firewalkers is being called upon to take on the challenge: a 20-foot barefoot walk across blazing hot coals, with embers reaching over 1,000°F. Under expert guidance, participants will learn to control their fear, stay focused and achieve something they may never have thought possible. The Firewalk is open to individuals, friends, families and workplace teams. Team entries are encouraged, making it the perfect challenge for friendly competition and team bonding. Each participant is asked to raise a minimum of £150 in sponsorship, directly supporting the charity's work. Places are limited. To sign up go to www.wessexcancer.org.uk/event/firewalk-2026.

90th BIRTHDAY CELEBRATION

David Court, long time resident of Lower Froyle, celebrated his 90th birthday at a very special surprise party in Froyle Village Hall.

His family organised the surprise for him and many members of his family and friends from the village gathered to wish him well.



WWW.FROYLE.COM: CALLING ALL HISTORY LOVERS!

Froyle is lucky to have one of the most comprehensive village history websites in the country. Over several decades, long term residents Chris and Annette Booth worked enthusiastically to gather the past and make it available online. They received information and recollections from all over the world. A question now arises concerning the future of the website. Thanks to the recent work of Mike Blanche the site is still available at www.froyle.com and the content is secure. However, the website looks its age. It was built with a technology that only older readers will remember. But the content is remarkable. It reminds me of an iceberg where much more is hidden from view than can be seen on the surface.

So, what should happen to the website to make sure all that content and that research remains accessible for generations to come? One suggestion is that we set up a Froyle Historical Society open to everyone with an interest in the story of our village. In the first instance the Society would take ownership of www.froyle.com and raise funds to maintain and improve it. Secondly, the Society would encourage further investigation and the dissemination of what has been discovered. Thirdly, the Society could run talks and lectures like the Froyle Gardening Club and the Froyle Wildlife Group have done so successfully. The Parish Council have indicated that they would continue to support such a venture as in the past they always supported Chris and Annette.

If you are interested in joining such an association or if you have ideas for research projects make yourself known by dropping an email to me or one of the names below. Please do it as soon as possible and we will report back in the next edition of the Magazine.

Ben Stanberry (ben@stanberry.uk) Philippa Cullen Stephenson (pacullen2024@outlook.com) Andrew Potter (apotsing@gmail.com) Nick Whines (nick@whines.co.uk).

Why don't you now spend 30 minutes dipping into www.froyle.com? This is by far the best way of discovering what we have and what would be good to both preserve and enhance.



A good place to start your exploration are the two maps: one for Upper and one for Lower Froyle. Click on a building and the journey back into the past begins. This is the junction between Froyle Road and Well Lane in Lower Froyle. The photo dates from around 1900.



Froyle Road at the junction with Well Lane looking towards the Golden Pot (as was)

The building on the left is the ancient Prince of Wales pub. Around 1910 it was demolished and a fine new pub was built. It closed in 1998 and was converted into a private residence and renamed the 'Old Malt House' (see opposite). The Prince of Wales sign can still be seen on a beam above the front door. On the other side of the photo is the 'Mission Church of St Joseph. This was built around 1880 by the Sir Hubert Miller so the good folk of Lower Froyle didn't have so far to walk to say their prayers. It was demolished in the 1950s.



St Joseph's Church. Looking back in the opposite direction. The same gate can be seen in both photographs

Nick Whines
nick@whines.co.uk
01420 23130

A BLAST FROM THE PAST!



Many an evening in November and December, lights burned late into the night in the upstairs office at Well Lane Corner. Sue would timidly ascend the stairs with a plate of sandwiches, a mug of tea, or a gin and tonic, and watch as the door slowly opened, and a claw-like hand appeared, to take the offerings into the lair. What has been going on in there? Now all can be revealed!

Mark has been very carefully rescuing the contents of some VHS tapes of Froyle, made around the Millennium, and pretty fascinating they are. They include a film taken of the Open Gardens in 1997, a film entitled *The Final Year* – not as apocalyptic as it sounds, but recording the year in Froyle in 1999, and *A Garden Year*, a narrative of the Garden Club in 2000.

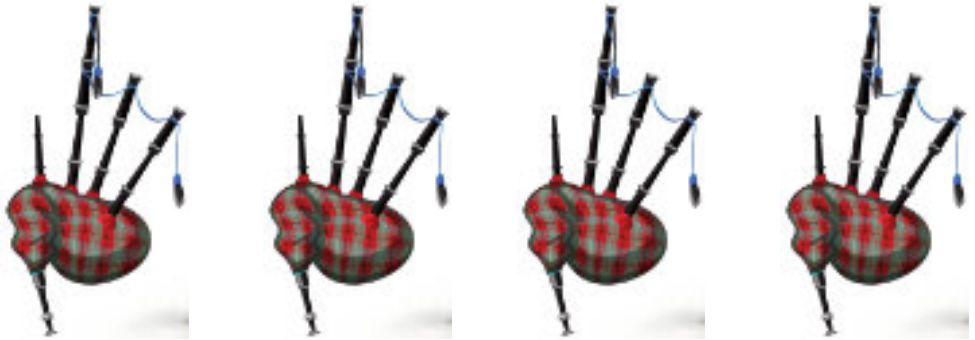
After well over 30 hours (he tells me) of painstaking capture and recovery, for all you Froyle history enthusiasts, or even folk who would just like to have a look as a change from cat videos, these have now been uploaded onto YouTube by the very excellent Mr Mike Blanche, and can be found using the following links;

- 1997 Open Gardens - <https://www.youtube.com/watch?v=lwV5UNbWZ00>
- The Final Year - <https://www.youtube.com/watch?v=eN12LQ9xrz0>
- A Garden Year - <https://www.youtube.com/watch?v=A7XgURkM0A0>

There is also a delightful film, *A Thousand Years of Froyle* - <https://www.youtube.com/watch?v=BrRBctMD47U> and the original of the video shot by Mark and Mr Nick Whines of the Froyle Gardens in 2020, when we were unable to open our gardens due to lockdown - *FoG NGS 2020*; goodness, the village looks pretty! You can find this one here - <https://www.youtube.com/watch?v=A7XgURkM0A0>.

So there you are. Fire up your devices, and spend a winter evening on a trip down memory lane. Who needs Netflix?

Sue Lelliott



**BURNS NIGHT AND CEILIDH AT
THE ANCHOR INN
IN AID OF THE ANTHONY NOLAN TRUST**

A note of huge thanks to Kevin and the team at The Anchor for joining forces with me and creating a night to remember on Saturday 24 January.

With a piper and address to the haggis, a 3-course Haggis supper and a Ceilidh, the evening was a wonderful mix of formal tradition, cheek-aching laughter and local community.

Thank you also to everyone who joined us for the event and donated so generously to the raffle, which has raised over £1400 in aid of the Anthony Nolan Trust, a charity so very close to my heart. This will go towards helping save lives through the power of stem cell transplants.

Should you wish to sign up to the register which is easy and free for those aged 16-30, please visit www.AnthonyNolan.org.

For those aged 30-55, you can also join the register at www.DKMS.org.uk.

Same again next year?!

Sarah Khan



THE REAL NATIVITY - FROYLE 2025

It's the 6 January 2026, there's snow in the air and on the ground. It's cold - minus three! Two weeks ago today Froyle was buzzing with activity as we prepared to host the benefice Real Nativity event for the first time.

I was blessed to have six fab-tastic team leaders working with me to deliver the event: Phil Roberts in charge of the Marshall's, Sarah Roberts in charge of the Church, Jo Mills in charge of Catering, Allison Cavanagh in charge of Performance and Chris Wilson in charge of Sound and Vision. In total we had fifty enthusiastic volunteers pitching-in.

There had been planning sessions, briefings, rehearsals and procurements but today was the day we had to get the show on the road!

We'd all been watching weather forecasts very closely for the previous two weeks and two days before curtain-up and there was a high degree of certainty that it was going to be a cold, but, mercifully, dry night.



We had three stages, one Prophet, one Narrator, one Angel Gabriel, Mary and Joseph, three Wise Men, one real baby, the Binsted School Choir and three donkeys to coordinate, light, amplify, move around a large field and up into the church. And hopefully a huge crowd. What could possibly go wrong.... (plenty – but that's another story).

We had no idea how many people would come along, so we optimistically planned on one hundred and fifty. We were somewhat surprised, delighted and amazed that nearly three hundred Bentley, Binsted and Froyle villagers came to celebrate the birth of Christ

on a cold December night in a field in Upper Froyle. Thank you all for coming along. We hope you all had a fine time that got your Christmas celebrations off to a good start.

It's a great testament to the strength of our village communities that so many people willingly got involved from all three villages. It was held in Froyle this year, but there were people involved from right across the benefice. I'd like to give special mention to James Huddleston for allowing us to use his field and to Mick Wells for getting the ground into perfect condition for the night. Also, thanks to





Hugo and Katie Mills for lending us baby Otto: he was of course the star of the show. Chris Wilson and his team from WLX Productions, who sponsored the event, and are based in Kingsley, were quite simply magnificent. Their production expertise and West End quality audio-visual genius is what makes The Real Nativity such a special evening.

There are some wonderful photos as well. You can see them online here: <https://andreakozak.pic-time.com/LySLfjaC479ML>. Thank you to Andrea Kozak for her skill and hard work capturing the essence of the night.

All donations go to supporting Jack's Place and Naomi House Children's Hospice and we believe this year's total is around £600.

Final thanks to our audience for supporting this event, we can't do it without you – do come along in December 2026.



Nigel Southern – Producer

Waverley Singers



Saturday 21 March 2026, 7pm
Guildford Cathedral

Exaltation!

Vaughan Williams *Mass in G Minor*,
The Lark Ascending, and *Te Deum*

Programme includes Bach *Violin Sonata No.1 in G minor*
and Mazzoli *Vespers for Violin & Electronics*

Violin - Elizabeth Cooney
Organ - Philip Scriven
Conductor - Richard Pearce

Tickets: in advance/on the door
Premium £20/£22 General £18/£20
£5 Students U16 free subject to conditions



ticketsource.co.uk/waverleysingers



waverleysingers.com

The Waverley Singers is Registered Charity no. 284125



ST MARY'S CHURCH NOTES

Vicar: The Reverend Matt Boyes 07469 270590 E: matt@benbinfro.co.uk
Administrators: 01420 23339 E: admin@benbinfro.org W: www.benbinfro.co.uk



Church Wardens:

Simon Marshall 07734 214419
sm517@icloud.com

Jack Stephenson 01420 23216
romanhorse@hotmail.co.uk

Anna Friend: Sarah Roberts
07831 294852 sarahfroyle@gmail.com

Benefice Pastoral Care

Nick Carter 01420 489122
nick.carter1945@outlook.com

Anna Chaplain:

The Rev Fran Harrison 07765 058593
annachaplain@benbinfro.co.uk

FEBRUARY SERVICES

Sun 1 Feb	9.30am	Binsted	Holy Communion & Children's Church
	11.00am	Oakhanger	Holy Communion
	6.00pm	Bentley	Praise
Sun 8 Feb	9.30am	Bentley	Morning Worship & Children's Church
	11.00am	Froyle	Holy Communion
	6.00pm	Kingsley	Praise
Sun 15 Feb	9.30am	Froyle	Morning Worship
	11.00am	Kingsley	Holy Communion
	4.00pm	Froyle	Messy Church
Wed 18 Feb	9.30am	Froyle	Ash Wednesday Holy Communion
	6.30pm	Binsted	Ash Wednesday Holy Communion
Sun 25 Jan	9.30am	Bentley	Holy Communion & Children's Church
	11.00am	Binsted	Morning Worship
	6.30pm	Froyle	Evensong

ST MARY'S NEWS

The beginning of the church calendar, Advent, leading up to Christmas, is also the busiest time at church. This year was as busy as ever, with all the usual services well attended; also the 'Real Nativity' on 23 December, on loan from Binsted - a bold undertaking by Nigel Southern: see the report on page 18.

Binsted in their turn put on for the first time for a long time a carol service on the last Sunday before Christmas, which filled Binsted church. To avoid clashing, Froyle's carol service was on the Sunday before, and was equally well attended. The Christmas Eve Holy Communion in Froyle was notably better supported this year, perhaps because it was held at 10pm, making it Late Night Holy Communion rather than Midnight Holy Communion....

After the rushing of December, we returned to the usual rota of services in January, but Ash Wednesday (this year on the 18 February) and Lent will soon be upon us. We will have a Holy Communion service in Froyle at 9.30 am on Ash Wednesday morning with the imposition of ashes (a cross marked on the forehead by the vicar) for those who wish. This follows the usual Shrove Tuesday pancake lunch in Binsted organised by the Benefice pastoral care team for the more senior members of our community.

Before then, we have the happy occasion of Ted Matthews' baptism at our Morning Worship service at 9.30 am on 15 February. Do come along and support that – breakfast (bacon sarnies, croissants etc) will be served beforehand, so get there in good time!

Later that day, also in church, Froyle are hosting Messy Church, so a busy day for us...

Looking further ahead, a month later, 15 March is Mothering Sunday. We shall combine a suitable form of Morning Worship with Messy Church – the Messy Church element will be run by the Binsted team, but we thought it would be fun to combine it with a Mothering Sunday service, and there isn't a service in Binsted on that day.

Before we know it, it will be Holy Week and April...

And in the meantime, do come along to the lent lunches every Wednesday in Lent (see page 7).

Finally, you will have noticed (and received an email about) the cordoning off of the footpath running alongside the wall, part of which forms the boundary between the churchyard and Froyle Park. This has apparently been requested by East Hants Building Control department of Froyle Park due to the unstable state of the wall. We are in discussions with Froyle Park as to how best to deal with this. We'll keep you informed. In the meantime, please accept our apologies.

*Simon Marshall
Jack Stephenson
Churchwardens*

THE VIEW FROM THE VICARAGE

St. Valentine's Day on 14 February has become a feature of our culture, particularly since the 1950's and the realisation of the commercial opportunities such a day presents. After the slump following Christmas, restaurants, florists, card manufacturers and chocolatiers look forward to the boost that this day brings.

Who was Valentine? Well, it's a little complicated and a lot of myth and legend has sprung up around him. There are 3 early church martyrs called Valentinus and the legend is that one was a priest or bishop who smuggled letters to those facing martyrdom encouraging them in their faith. He also carried messages back to loved ones telling them not to despair, but that suffering for Christ leads to a crown of glory. He was successful in this ministry until he was martyred himself.

We hear a lot about those seeking martyrdom in order to achieve paradise. The Christian understanding is very different. Martyrdom is never to be sought, but God's love covers those who die for their faith, and that their death should be an inspiration and give courage to others to live Christian lives, despite the cost.

Persecution continues today. In the 20th century it is estimated that half of the total number of Christian martyrs throughout history were killed. According to some figures, this total is as high as 40 million people. Certainly today, Christians are the most persecuted faith. A very conservative figure states that 7,700 died as martyrs in 2025. In Nigeria today the number of martyrs is higher than the rest of the world combined.

1 in 7 Christians worldwide suffer some form of persecution. Whether that is physical or sexual violence or death threats and intimidation.

Valentine reminds us that all lives are precious and seen by God. His love is available to all and the fact that so many are prepared to not renounce their faith, but to suffer the consequences for the love of God they have discovered, is still powerful today. If you want to find out more, look at www.opendoors.org.

May the love of God surround you and your loved ones, and inspire you to live passionate lives that do not count the cost.

Matt Boyes

Rector of Bentley, Binsted and Froyle

Wednesday 18th February 2026

Ash Wednesday



Ash Wednesday marks the beginning of Lent, the 40-day period in the lead up to Easter. Lent is a chance to slow down and be more intentional about giving your time and priorities to God, whether through prayer, acts of kindness, or giving something up.

Ash Wednesday itself started in the early Church, around 1st to 4th century as a form of public repentance, through sprinkling of ashes.

In services today, ashes from last year's palm crosses are used to mark a cross on your forehead, and the words, "Remember that you are dust, and to dust you shall return", originating from Genesis 3:19 are said. This is when God tells Adam that his life, like all human life, is temporary, but turning back towards God offers something eternal.

Lent represents the 40 days that Jesus spent in the wilderness, where he fasted, prayed, and resisted temptation (Matthew 4:1-11). Just as Jesus withdrew to focus on God, Lent invites us to step away from daily distractions and reflect on our lives – what's going well, where we need to grow towards God, and how we can deepen our faith.

**We have two services on Ash Wednesday
to mark the beginning of this season:**

9:30am Froyle Holy Communion

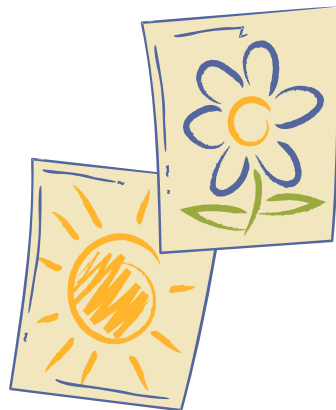
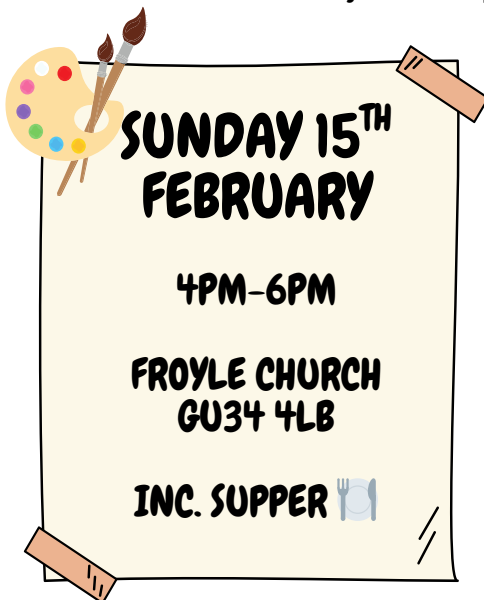
6:30pm Binsted Holy Communion



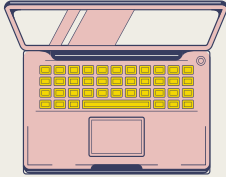
Messy Church

Messy Church celebrates faith with creativity and hospitality. We deliver Bible storytelling and crafts for all generations to enjoy together. At each session there will be crafts, activities, songs and stories to get stuck in with. Come along to a loving and fun atmosphere, that includes a hot meal.

No cost, just rock up and enjoy!



Work from home at Bentley Church Hall



Come along to our 'working from home' sessions at Bentley Church Hall. We will have structured days with quiet times for focussed work through the day and the opportunity for a social lunch to beat the loneliness, share ideas, and cheer each other on.

"It's amazing how much work you can do when you're away from distractions at home, surrounded by beautiful nature. I achieved so much more than I expected to, and really enjoyed having such lovely company through the day!"

Becky



Drop in
9am - 5pm

Dates:
February 10th
February 24th

Bentley Church Hall
Church Lane
GU10 5NA

chat to Becky or Gemma
or email admin@benbinfro.org for
more info

FREE soup lunch or order
from Bentley Stores

Structured but flexible
work days

Tea & coffee

WI-FI

Warm space in winter

Alton

u3a
learn, laugh, live

New Year, New Lower Membership Fees, then it's time to join the u3a

Would you like to learn, laugh and live? Do you have spare time that you would like to fill? Would you like to meet and make new friends? Your local Alton u3a has over 75 different activity and interest groups to choose from such as, Art and Craft, Dance and Fitness, Games, History, Literature and Music. We also have social, cultural and weekend activities too. Full details are on our website at <http://alton.u3aite.uk>.

Most of our activities take place at the Alton Community Centre, and we do have some outdoor activities such as cycling and walking. Our monthly talks and coffee mornings are open to all.

New members are always welcome, and January is a great time to join because our membership fees are reduced until the end of May. Depending on what you would like to do*, you can join from as little as £7 up to £38. You may join online via our website or by completing a membership application form that is available from the Alton Community Centre.

You may pick up a copy of our Annual Programme from the Alton Community Centre, Alton Library, the Allen Gallery and the Curtis Museum. If you would like to find out more about a particular group, then you can contact the Group Leader via our website. For general membership enquiries, please contact the Membership Secretary at alton.u3a.members@gmail.com.

*Subject to a space being available in the group.

Alton u3a is a Registered
Charity no. 1035164



FROYLE SMALL ADS

A reminder - Small ads are free to all Froyle residents (one per month).

So why not advertise items you no longer need, or are looking for, right here?

Or indeed services you can offer, or are trying to find?

Just email your text - and photo if you have one - to froylemageditor@gmail.com.

We are happy to include adverts free of charge in the magazine for notices of events associated with or put on by the village free of charge in the magazine, as long as they are not for profit or part of a commercial venture. Any adverts Notices of events which do not fulfil these requirements will incur a fee of £12.50 + VAT.

Professional Foot Care, Right in Your Community

Gentle, respectful treatment for:

- Diabetic foot health checks
- Corns, calluses and hard skin
- Fungal nails and athlete's foot
- Nail trimming and ingrown toenails
- Verrucas (children and adults)
- Foot pain, bunions and plantar fasciitis
- Recovery after injury or surgery
- Routine foot maintenance to stay comfortable

Supporting your **mobility, comfort and independence** — one step at a time.
Appointments held locally in village halls. No long NHS waits. No need to travel to town.

DBS checked • Qualified Foot Health Practitioner and Injury Rehab Specialist

Joanna DipFH BSc (Hons)

☎ 01420 343 130

✉ Joanna@BalancedBodiesSport.com

The Foot Health Clinic by Balanced Bodies
Bringing expert care to the heart of your community

AION
www.aion.farm

SEPT

Froyle raised, grass finished beef becomes available.
GO TO [aion.farm](http://www.aion.farm) to preorder

Your local produce

15% off
for Froyle residents

Grass Raised & Finished

Local Froyle Raised

www.aion.farm

USE CODE: "Froyle"

*Enter "Froyle" at checkout and get 15% off your total order on beef and lamb.

Selective steaks on request. Email posture@aion.farm for requests.

www.aion.farm

✓ Grass Raised ✓ Grass Finished ✓ Local Produce ✓ Ethical & Sustainable

- Domestic / Commercial Wiring
- Fuse Board / Consumer Unit Upgrades
- LED Lighting & Fixtures
- Sockets & Smoke Alarms
- PAT Testing & Fault Finding
- Inspection & Testing
- New or Refurbished Builds
- Earthing & Bonding
- Electrical Surveys
- **All Work Guaranteed & Fully Insured**



Get in touch for your free estimate today:

Tel: 07917680479 (24 hrs)

info@e-tekelectrical.com

www.e-tekelectricalservices.co.uk



RACHEL'S HOMEOPATHY

*A complementary way to better health
Treating causes to eliminate symptoms*

Clinics in

ALTON - PETERSFIELD - FAREHAM

ON-LINE - HOME VISITS

RACHEL CHANCELLOR, RSHom. (Registered Homeopath)

Appointments: 07766-524 877 or rachel@rachelshomeopathy.co.uk

www.rachelshomeopathy.co.uk



Society of Homeopaths

The unrushed moments make all the difference

We've helped thousands of families stay safe, comfortable, and happy at home. Whatever situation you're facing, whatever the question, Home Instead is here to help



 home
instead
01420543214

- Companionship Care – Matched Care Professionals for meaningful connections
- Home Help & Meal Prep – Clean, safe homes with nourishing, home-cooked meals
- Personal Care – Dignified support with bathing, dressing, and hygiene
- Mobility Support – Safe movement at home, including transfers and positioning
- Health Appointment Support – Help attending important medical appointments
- Community Engagement – Stay active with visits to local groups and outings
- Transportation – Reliable help getting to shops, friends, and appointments
- Medication Management – Support with timely and accurate medication routines

Local Handyman Services

Reliable handyman for help with all those jobs around your Home and Garden



*I am Chris Marston and I have lived in Froyle for many years.
If you need some help with your **Home** or **Garden** maintenance,
call me on **07764 255 419** to arrange a no-obligation quote.*

Outside - Hedge cutting, strimming, shed refurbishment, raised bed building, pergola design and build, garden gate fix

Inside -Curtain poles, flat pack assembly, shelving, minor repairs/plaster work and painting/decoration

Local References available and fully insured

THE ANCHOR INN

AT LOWER FROYLE

What's On



Monthly Quiz night

Thursday 12th February at 7.30pm

Max 6 people per team. Free entry. Booking is preferable

6 Nations Rugby tournament

Thu 5th Feb until 14th March

We will be showing all 6 nations matches. Book your table to ensure the best seats.

Valentine's weekend

Fri 13th and Sat 14th February

Treat your loved one to a lovely meal by the fires. Book your table now

SAVE THE DATE: Thu 26th March at 7.30pm

Beer and Cheese pairing Masterclass

Join our Master Brewer for a very interesting evening.

Booking is essential



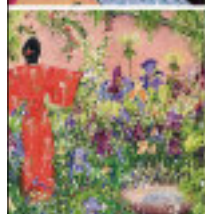


athertongreenart

Creating vibrant contemporary collections

Be inspired by our unique collection of contemporary art including paintings, prints, sculptures and ceramics by a selection of artists in our gallery at Farrington Place.

Open by appointment during February



Art Gallery: Atherton Green Art is situated in a lovely Victorian home in the village of Farrington in Hampshire and brings the exciting talents of a select group of emerging and mid career artists to collectors and new buyers of art.

'Whether you want to start a collection, build a collection or commission a piece of art, we are here to help'



+44 (0) 7890 098 034
sue@athertongreen.art
@athertongrart

Work is available online at www.athertongreen.art

Farrington Place Church Road, Upper Farrington, Alton Hampshire, GU34 3EH

The Beehive Montessori pre-school.
Settings in the villages of Shalden and Lindford
Providing high quality education in a nurturing environment
with experienced staff.



Funding for 2, 3 and 4 years available.
For further information call Annette or Jan 07795 270184
or join our Facebook pages.

www.beehive-alton.co.uk



ACORNS B&B



Acorns is a self-contained guest cottage, located in the picturesque village of Lower Froyle.

It has its own entrance, parking, and a south facing private terrace which offers beautiful views across open fields.

There is a generous bedroom with a super-king sized bed (two singles can be arranged on request), comfortable sitting room, together with a small but very well-equipped kitchen and a luxury shower room.

Fresh bread and milk, juices, jams, cereals and yoghurts will be provided for your breakfast along with a selection of teas and coffees.

Consistently awarded 'guest favourites' on Airbnb.

Contact Alice for further information on
07768 465233 or ghins@gmail.com
Instagram @acornsbnb



Move with Tegan

Froyle Village Hall
Ryebridge Lane, Lower
Froyle, Alton GU34
4LG

Pilates in Froyle

Monday

09:30 Dynamic Mat

10:30 Gentle Mat

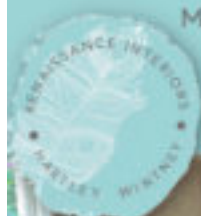
Wednesday

Mixed Mat

18:30-19:30

For enquiries, contact Tegan on
07761209998 or email
teganhansensa@gmail.com.

£10 per Pilates Class
£50 for block of 6 classes



Made-to-Measure Curtains, Blinds, Upholstery
Interior Design
Concept to Completion Service
Extensions, Conversions & New Builds

Scan to book
your FREE
design
consultation



AWARD-WINNING INTERIOR DESIGN

On Your Doorstep



Over 30 years
experience!



Award-winning
customer service



Inspirational
designs



www.renaissanceinteriorshw.co.uk

hello@renaissanceinteriorshw.co.uk 01252 220 400

Virginia Villas, High Street, Hartley Wintney, Hampshire, RG27 8NW



Trenbo's

Handyman - Electrical - Maintenance

07376908787
trenbosjobs@gmail.com

Fine Framing

Picture Framers
4 Weyside Park Newman Lane
Alton GU34 2PJ
Tel: 01420 82324
Email: info@fine-framing.co.uk

Opening Times:
Tuesday-Friday 9.30am-5.00pm
Saturday 10.00am-12 noon
Closed Monday



**DOWNIE &
GADBAN**

Solicitors & Notary Public
Est. 1905



Residential Conveyancing - Wills - Power of Attorney - Probate - Commercial Property - Property Development - Dispute Resolution

Instant conveyancing quotes available on our website
www.downieandgadban.co.uk

Why Choose Us?

We pride ourselves on being friendly, approachable and professional. We have been in our current building at the end of the High Street in Alton (close to M&S, The Ivy House and The White Horse) since 1962 and have been serving generations of families in the Alton area since 1905.

To discuss how any of our team could help you please give us a call and we will be happy to discuss your requirements.

Tel: 01420 82879

Email: info@downieandgadban.co.uk

Website: www.downieandgadban.co.uk

Andrew Wood

Heating and Plumbing Engineer



Gas Safe No. 15316

- BOILER CHANGES
- BOILER SERVICING
- POWER FLUSHING
- CENTRAL HEATING SYSTEMS
- GAS INSTALLATIONS
- GENERAL PLUMBING

For free estimates or advice telephone **Bentley (01420) 22637**

Paul Pascall

Painter and Decorator
Estimates and References
Available

01252 328965 Evenings
07803 723530 Daytime



Accepting new patients

- General Dentistry
- Dental Emergencies
- Dental Implants
- Adult Orthodontics
- Teeth Whitening
- Sedation
- Dental Acupuncture

The Clinic is on the ground floor so is easily accessible. Free on-site parking also available.

For more information please visit our website or get in touch



01420 550616

Shine Dental Clinic, Unit 10A Mansfield Business Park, Medstead, GU34 5P2,
info@shinedentalclinic.co.uk

Advertising rates 2025/2026

For Froyle businesses: £40+VAT/year, £24+VAT/half year for advertisements of **up to half a page/a third of a page on inside covers.**

For non-Froyle businesses: £60+VAT/year, £36+VAT/half year for **up to half a page/a third of a page on inside covers.**

For both residents and non-residents: £120+VAT/year, £72+VAT/half year for **a full page, £137.50+VAT/year for inside cover full page.**

The advertising year begins with the April edition, and the half-year with either the April or October edition.

All advertising must be requested and paid for through the Parish Clerk at froylemageditor@gmail.com and copied to clerk@froyleparishcouncil.co.uk.

We are pleased that local trades and service providers advertise with us and we do hope that you support them. However we do not check or endorse them in any way.

NOTES TO CONTRIBUTORS

The magazine is published in A5 size, portrait orientation, both online and in print. The online version is in colour but the printed version is in black and white.

Posters/Adverts

If you want a full page design your page in portrait layout. For half pages use landscape. You can send your copy in any size but it will be resized to fit on A5 portrait. To see how it will look is to design a full page as A5 portrait and a half page as A6 landscape.

Please submit artwork and copy as a JPG/PNG picture or PDF file, with, if available, the original Word or Powerpoint document and any photographs.

Articles

Please send text and pictures separately as well as in your complete article. As a rough guide a page is about 500 words – with no pictures.

Pictures should be high resolution JPEG or PNG files.

General

All magazine contributions should be submitted to froylemageditor@gmail.com. Please refer to the back cover for next month's magazine deadline.

In the event of any question over including or excluding any item or part of an item, or in relation to any other matter, the Editor's decision is final.

Village Events January 2026

<i>Sun</i>	<i>Mon</i>	<i>Tue</i>	<i>Wed</i>	<i>Thu</i>	<i>Fri</i>	<i>Sat</i>
1 1600-1800 <i>Life drawing</i>	2 <i>Rubbish</i>	3	4	5 <i>Garden Waste</i>	6 <i>1000-1200 Meeting place</i>	7
8 <i>1100 HC</i>	9 <i>Recycling & Glass</i>	10 <i>10-1200 Life drawing</i>	11 <i>1930 Garden Club VH</i>	12	13 <i>1000-1200 Meeting place</i>	14
15 <i>0930 Morning Worship</i> <i>1600 Messy Church</i>	16 <i>Rubbish</i> <i>1900 FPC</i>	17	18 <i>0930 Ash Wednesday HC</i>	19 <i>Garden Waste</i>	20 <i>1000-1200 Meeting place</i>	21
22 <i>1830 Evensong</i>	23 <i>Recycling & Glass</i>	24	25	26	27 <i>1000-1200 Meeting place</i> <i>1900 Froyle Wildlife</i>	28



PAX HILL

Care home for the elderly

Pax Hill provides person-centred care for Residential, Dementia, Nursing, and Palliative care needs in modern, comfortable accommodation.

Two purpose-built care homes are set in nine acres of beautiful gardens in the picturesque village of Bentley.

For more information or to discuss your individual needs, please call Angela.

01420 525882 | mail@paxhill.co.uk | www.paxhill.co.uk



Physiotherapy

In the centre of Bentley

by

Pippa Blizzard

Chartered Physiotherapist
MCSP HCPC BAHT AACP

physiotherapy@pippa-blizzard.co.uk 07714 239644 www.pippa-blizzard.co.uk 



SILVERWING CARS

Call Tony on 07971 859947

Reliable Professional Taxi Service
Advanced Bookings Advised

Froyle Directory

Froyle Parish Council (F) www.froyleparishcouncil.org.uk

Andrew Potter, Clerk ✉ clerk@froyleparishcouncil.org.uk ☎ 07979 030571

Froyle Residents Email List email to join ✉ clerk@froyleparishcouncil.org.uk

East Hampshire District Council www.easthants.gov.uk

Tony Costigan, District Councillor ✉ tony.costigan@easthants.gov.uk ☎ 07770 666896

Hampshire County Council www.hants.gov.uk

Mark Kemp-Gee, County Councillor ✉ mark.kemp-gee@hants.gov.uk ☎ 07748 945947

Froyle Village Hall (F) www.froylevillagehall.co.uk

Chair: Gillian Paul: chairman@froylevillagehall.co.uk ☎ 07774880885

Bookings: Sarah Zorab ✉ bookings@froylevillagehall.co.uk ☎ 01420 520361

The Meeting Place - Fridays 10-12 at the Village Hall Susie Robertson ☎ 01420 520820

Froyle Gardening Club (F) www.froylegardeningclub.co.uk

Geoff Hawkins ✉ info@froylegardeningclub.co.uk ☎ 01420 88176

Froyle Wildlife www.froylewildlife.co.uk - Barry Clark ☎ 01420 23520

Tree Warden Sue Lelliott ✉ tree.warden@froyleparishcouncil.org.uk ☎ 01420 22015

Speedwatch Group Gordon Mitchell ✉ champersg@hotmail.com ☎ 01420 23851

Police Community Support Officers ☎ 101

PC Alex Routt ✉ alex.routt@hampshire.police.uk or 07891 484 670

PC Jess Hornsby ✉ jessica.hornsby@hampshire.police.uk

Froyle Archive www.froyle.com/archive

The Benefice of Bentley, Binsted & Froyle (F) www.benbinfro.co.uk

Matt Boyes, Vicar - ✉ matt@benbinfro.co.uk ☎ 07469 270590

Sarah Roberts, Anna Friend - ✉ sarahfroyle@gmail.com ☎ ☎ 07831 294852

St Mary's Church Flower Rota - Gill Bradley ☎ 01420 520484

Bentley, Binsted and Froyle Care Group - Bookings ☎ 07775 458873

(F) **Froyle on Facebook** - *Froyle Residents, Froyle Advertising*

Key: ☎ Telephone ✉ Email (F) Facebook (C) WhatsApp

MARCH DEADLINE: FRIDAY 20 FEBRUARY 2026

For Notes to Contributors, please see page 39.