

Froyle Village Magazine



November 2025

No 523

<https://www.froyleparishcouncil.org.uk/village-magazine>



TRAVEL WITH MEON

MEMORIES THAT LAST A LIFETIME



*Award-Winning Travel Agent
on your doorstep!*

Meon Valley Travel, 32 High Street, Petersfield, Hampshire GU32 3JL

Telephone: 01730 711010 | Email: leisure@meonvalleytravel.co.uk

www.meonvalleytravel.co.uk



NEWS FROM THE PC

Parish Clerk - Andrew Potter

E: clerk@froyleparishcouncil.org.uk

W: www.froyleparishcouncil.org.uk



The Parish Council (PC) met on 13 October with 8 members of the public joining the meeting. The next meeting is on Monday 17 November at 19.00 in the Village Hall. A summary agenda will be displayed prior to the meeting with the detailed agenda displayed on the PC website. All members of the public are welcome to attend but, if they wish to raise any matter, the subject must be notified to the Clerk five days in advance of the meeting for inclusion on the agenda. The PC regretfully accepted Carrie Marshall's resignation from the PC. She was thanked for her active contribution especially with the playground and representing younger families. Phil Roberts was co-opted to the PC as a replacement for Andrew Aldridge.

A resident presented a map showing the possible route of an ancient path across a field in Froyle and enquired whether the PC would support the Ramblers Association's efforts to have it reinstated as a footpath if it were regularly walked. The Chair responded that the new owners of Froyle Estate had undertaken an in-depth review of rights of way across their land in conjunction with EHDC which did not identify any of these ancient paths. The objective to have more permissive footpaths in Froyle was supported in principle by the PC and discussions were ongoing with landowners, and in particular Froyle Estate, to identify possible routes. It was stressed that, unless identified as a Public Right of Way (PROW), walking on any private land around the village was not permitted. A footpath map has now been erected on the wall of the Pavilion facing the Village Hall car park clearly showing the PROWs across Froyle Parish. We hope it will be of assistance to walkers, both local and visiting.

The resident also expressed their concern that the PC did not fully represent all groups within the village. The Chair responded that the PC encouraged and welcomed diversity of Councillor backgrounds and interests, but it was proving difficult to attract and retain residents as Councillors when they had limited time available.

Concerns have been expressed by residents about the risk of toxins being released if the wood from the pirate ship is burned on the bonfire as originally planned. After extensive enquiry, the source of the original paint could not be identified so the PC has agreed with the Village Hall Committee that no risks can be taken by burning the wood, and an alternative means of disposal will be identified.

Members of the PC met with the owners of Froyle Park wedding venue to discuss concerns raised by them that the PC report in the October edition of the Magazine was neither fair nor balanced. The PC members confirmed that in their view the report was an accurate representation of the discussion, and this view has been endorsed by residents present. The Froyle Park owners confirmed to the PC that 'the venue operates a robust Drugs & Alcohol Policy aligned with best practice in the industry and, during their period of ownership (June 2023 to August 2025), they had never received a complaint or report alleging drug use on or outside the premises'. They further advised that 'police had attended the venue on three occasions in one evening in September following a call from a concerned neighbour about alleged drug use outside the venue, but no concerns were raised with the venue owners and no follow up visits made.'

A meeting was held with Hampshire Highways in early October regarding improvements to the H&C junction. The proposals largely entail changing the A31 road markings to make the dangers at the junction more visible and encourage approaching vehicles to reduce speed. The PC commented that it did not consider more road markings to be particularly beneficial because the junction was already cluttered and confusing. A primary concern of residents regarding traffic ignoring the No Entry signs at the bottom of H&C hill had not been addressed.

There were two planning applications received since the September meeting both relating to tree works on which the PC had no comment. Since the last meeting, applications have been received from Froyle Estate to demolish the existing farm buildings at Saintbury Hill farm; and the owners of Saintbury Hill Farmhouse have applied to convert their existing barn and build an extension. Any comments on these applications must be submitted by 5 November via the EHDC Planning portal.

EHDC have launched a consultation on the Conservation areas in both Upper and Lower Froyle. A flyer and link to the proposals was delivered to households in the conservation areas and distributed more widely by the PC via email and Facebook. Residents are encouraged to review the proposals and submit their comments before the consultation closes on 30 November. The PC are reviewing the proposals and will circulate further information to residents once completed.

As always, don't forget to visit the Village website (address in header) to find out news, information about activities in and around Froyle, village calendar, and useful contacts.



Froyle Bonfire Party

5 November '25

Bonfire
from 6pm
Fireworks
at 7pm

Mulled Wine
Hot Dogs
Burgers
Bucket collection

FROYLE
VILLAGE HALL

Come and help build the bonfire
Sunday 2 November at 9.30am.



Bookings:
Sarah Zorab
01420 520361

www.froylevillagehall.co.uk

Hot off the press! We held a Car Boot Sale in the Village Hall and Rec on Saturday 25 October on a beautiful cold and crisp morning. We are still counting the proceeds but happy to share we made a profit which will go towards supporting the costs for bonfire night. It was great to see so many familiar faces come to support or perhaps just there for the delicious bacon rolls! Once again thanks to all the volunteers who make these events such a success.

Remember Remember the 5th of November when Froyle will once again host our annual Bonfire and Fireworks Party from 6pm on the Rec.

Bonfire night is one of the key village events where the community can come together and enjoy a fun evening. The bonfire will be lit at 6pm and the fireworks start at 7pm. From 6pm there will be opportunities to buy burgers, mulled wine & cider, drinks and sweets.

We want to continue to keep this event open to everyone and don't charge an entry fee like some of the neighbouring villages, but we are always happy to receive any donations no matter how small. Bucket collections will be available on the night where we can accept cash or card. All proceeds go to supporting the running of the Village Hall.

Events like this rely on the wonderful volunteer spirit that exists within Froyle and thanks to all those who have already offered their help and time. And...we could really do with a few extra hands to help, so it's not too late to get involved please contact David Birn on dabirn@gmail.com if you would like to lend a hand.

Another tradition is the building of the bonfire itself which we will do on Sunday 2nd Nov at 9.30am and again we welcome as many hands as possible to help, if you would like to help please remember to bring gardening gloves!

We look forward to seeing as many of you as possible.

Gillian Paul

November Activities at the Village Hall

Dynamic Pilates **Monday 3, 10, 17, 24 Nov** **9:30 – 10:30am**

Gentle Pilates **Monday 3, 10, 17, 24 Nov** **10:30 – 11:30am**

Mixed Pilates **Wednesday 12,19, 26 Nov** **6:30pm – 7:30pm**

Move with Tegan. £10 per class, £50 for a block of 6. For bookings or more information contact Tegan on 07761209998 or teganhansensa@gmail.com

Life Drawing **Sunday 2, Nov** **4 - 6pm**
Tuesday 18 Nov **10am - Noon**

Untutored. Beginners welcome. Bring your own materials.
£10 cash on the door. dabirn@gmail.com for more information or to rsvp.

Meeting Place **Fridays 7, 14, 21, 28 Nov** **10am - Noon**

Join us for delicious homemade cakes, hot drinks and good conversation.

Garden Club **Friday 14 Nov** **7:30-9pm**

"The Wild Gardener" This talk will explore the life and work of William Robertson, called by many the 'father of the English Flower Garden' and will try to resolve why he remains a mystery to most of us. Non-members pay £3 on the door

Messy Church **Sunday 16 Nov** **4-6:30pm**

Join us for our Advent and Christmas preparations as we create decorations, retell the Nativity story, and share a delicious meal.

Parish Council **Monday 17 Nov** **7 - 10:30pm**

Agenda: <https://www.froyleparishcouncil.org.uk/your-council/agendas-and-minutes>.

Wildlife Club **Tuesday 25 Nov** **7:30pm**

David Elliott, the National Trust's Lead Ranger for South Downs West, will give a talk on beavers and water voles and their return to the landscape, including an update on the progress of the River Wey Water Vole Recovery Project.

Wreath Making **Wednesday 26 Nov** **2-4pm**

A Christmas Wreath Making Workshop sponsored by The Froyle Gardening Club A chance to create something unique and decorative for Christmas guided by Anne Blunt. Open to all. Gill Bradley at gabradley@gmail.com for information.



The Meeting Place

This takes place every Friday morning in the Village Hall from 10am-12 noon, so do come and join us for delicious home made cake, hot drinks and good conversation.

We also now have a NEW selection of books and jigsaws to borrow.

November Kitchen Helpers

(No need to be at the Hall till 10.00am)

7th	William Knowles
14th	Brian Jones
21st	Barbara Graham-Clarke
28th	

November cake bakers

7th	Andrea Kozak	Brian Jones	Sue Lelliott
14th	Barbara Graham-Clarke	Jo Mills	Deborah Addison
21st	Sally Turville	Lauraine Bourne	Kate Skerrett
28th	Alice Ghinn	Gill Bradley	Emma Archer-Perkins

Please organise swaps amongst yourselves if possible and let us know, or contact us if necessary.

We try to remind the bakers, but please let us know if you can't bake for any reason. It is also helpful to know what cakes are coming, just so we don't get three of the same variety!

Cakes can be left in the porch at Wykeham House, Lower Froyle on Thursdays or bring to the hall after 9.30am on Fridays.

Gill Bradley 520484
gahbradley@gmail.com

Susie Robertson 520820
sirinfroyle@gmail.com

Jenny Gove 23697
govejenny@gmail.com

FLYING HIGH SPITFIRE COMPETITION



Along with my colleagues from the Hart Social Cycling Group, I am a regular visitor to 'The Meeting Place' on Friday mornings where we enjoy the coffee and cake and the very warm welcome that we receive from the helpers, local people and others present. We are always happy to support any fundraising events that are taking place and earlier in the year this included the 'Spitfire' competition, organised by the Froyle Crochet Group, in aid of The Royal British Legion, in commemoration of VE Day.

The aim was to guess the number of crochet poppies used in making the model Spitfire displayed in the Village Hall and I was very surprised to hear that my guess of 1054 was the closest – remarkably just one out from the 'actual' total of 1055!

My prize was 2 tickets for a tour of the Spitfire 'Factory' at Biggin Hill, which I was able to enjoy with my son, who is an aircraft enthusiast and model maker. Our visit on 27 September was a fantastic experience where we saw many exhibits of Spitfires as well as other vintage aircraft. We also saw the live take-off of a working Spitfire, with its distinctive 'Merlin' engine.



I wish to place on record my thanks to the Froyle Crochet Group for their fundraising efforts and for facilitating such a wonderful prize that I feel very privileged to have been successful in winning.

*Martin McCarthy
Church Crookham*



Froyle Gardening Club

Froyle Gardening Club

November in the Potting Shed

This autumn has made up for the hot summer. I have more colour and growth now than in September, so I am just enjoying the moment.

Now that the leaves are starting to fall it is a good time to harvest them, but only from areas such as drives and open lawns. Leaves that have gathered around trees, shrubs and in borders are there for increasing the biodiversity of the garden. I collect my leaves using a rotary mower. This chops up the leaves and adds a little grass to the pile which helps breakdown the leaves quicker. Adding moisture to the leaves is also important as dry leaves will take years to breakdown. Autumn is the time to plant and sow overwintering broad beans, onion sets and garlic. If the ground is wet then they can be planted/sown in cell trays and planted out into the garden later in the winter or early spring. Because of the mild weather weeds are still growing, so keep the hoe moving amongst the seedlings as they emerge.

Autumn is also a good time for planting trees, shrubs and fruit bushes. It gives the plants chance to get some roots into the surrounding soil and be more resilient to drier summers. Remember that it is a square hole so that roots go outwards and not round and round. Plans grown in pots need to have the root ball sliced vertically two or three times to encourage new roots to venture outwards. No need to add fertiliser or rich compost to the soil, it is better to use 'Root Grow' mycorrhizal fungi that help the roots expand into the surrounding soil. Water in and then apply a mulch over the top..

Geoff Hawkins

October 10th Meeting

The last meeting was **'My Wildflower hot spots of the world'** presented by **Carol Watson**

Once again Carol Watson gave us a wonderful evening of beautiful slides, entertaining comments and a glorious trip around the world from top to bottom, east to west and back home. It was all about the fascinating areas around the world that she and her husband had walked and travelled looking out for glorious wild flowers. We saw some favourite plants we had in our gardens growing in the wild as well as exotic orchids and other unusual wildflowers. A great evening enjoyed by all.

November 14th 7.30 pm

The Wild Gardener with Julie Verity

William Robinson got his name as the 'Wild Gardener' after the title of one of his books. He is also often called the 'father of the English Flower Garden' for the same reason. He was a contemporary and friend of Gertrude Jekyll, and was

probably the most influential horticulturalist in England during his lifetime. But, unlike Gertrude Jekyll, most of us have never heard of him – why? During the last half of his life, he created the garden at Gravetye Manor in Sussex, described by some as the best garden in England. This talk will explore his life and work, and will try to resolve why he remains a mystery to most of us.

FROYLE 100 CLUB – OCTOBER DRAW

The winners in the October 2025 draw were:

1 st	Sarah Watkins
2 nd	Ann Figgins
3 rd	Deborah Grant
4 th	Beverley Morgan

Congratulations to all...

...and REMEMBER, REMEMBER, the subscription amount doubles to £24 a year from 1 January 2026 – still incredibly good value given that this is the first increase since 1982, and of course the prize money will go up to reflect this increase (50% of subscriptions are paid out in prize money over the year). The more subscribers the better for everyone!! For details of what you need to do, see page 9 of October's magazine, or call/message/email me.

William Knowles

Tel: 07775 928933, email: wbk@wbknowles.com

PLANT STALL

The Husseys Lane charity stall is now closed and it has raised £550 for Phyllis Tuckwell Charity. Many thanks to everyone who has donated towards it and please start saving up plants for it for next year !

Sue and Mark Carr

PUPPIES

Our beautiful goldador Mabel gave birth to 7 puppies on 14th October. 5 boys and 2 girls ranging in colour from fox red to white. Her mother was a fox red lab and father a golden retriever. She was mated with a KC registered yellow lab with perfect hip and elbow scores (pups are 3 part lab, 1 part golden retriever). Puppies will be ready for their new homes from 10th December. Please contact Sarah on 07905 495989.



Froyle Wildlife

Beavers and Water Voles: Their Return to the Landscape

Tuesday 25th November 7.30pm

David Elliott, the National Trust's Lead Ranger for the South Downs West, will give a talk on beavers and water voles and their return to the landscape. He will give an update on the progress and work of the River Wey Water Vole Recovery project, and will also talk about where we are currently at with regard to the return of the Beaver, locally and nationally, as well as discussing their respective ecology and why they are such important species to consider when thinking about the future of our wonderful local rivers. He will be happy to take questions and participate in discussion.



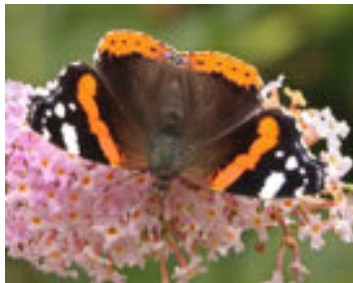
All welcome to the talk, Froyle Village Hall, doors open 7pm, for start at 7.30pm, teas and coffee. £3 non-members.

Jayne Fisher

Was 2025 a good year for butterflies?

Compared to last year, we had the hottest summer on record in 2025. This weather favoured many butterfly species but numbers recorded by Butterfly Conservation showed below average abundance over a 10 year average. They say 'it may feel like we've seen lots of butterflies, but that's only because last summer was so awful'.

The top 5 species seen this year were Large White, Small White, Gatekeeper, Red Admiral and Meadow Brown. So 2025 was a better year for butterflies but long term trends in the UK show an alarming decline in 80% of since 1976.



Red Admiral

In Froyle we informally record butterfly numbers at several locations; in our garden; at the meadow surrounding the wildlife pond; at a chalk grassland site and occasionally along public footpaths. Froyle also has one of the WCMS (Wider Countryside Monitoring Scheme) surveys. The method involves visiting a 1K OS map square between May and August to count butterflies along two 1km survey lines running through the square. As 70% of the UK's land is in agricultural use, it is important that butterflies in these areas are monitored to gauge the health of our countryside. Butterflies and moths are fantastic pollinators, they are a part of nature's food chain, and they are an early warning indicator for problems in the wider environment. There are the around 50 butterfly species that occur in Hampshire and we are fortunate in Froyle to have 36 species, including the Small Blue and Brown Hairstreak that are GB Red Listed.

You can help butterflies and other insects in the garden by not using pesticides and growing plants that provide nectar or are the food plant of the larva. You can support

nature conservation organisations such as Butterfly Conservation (www.butterfly-conservation.org) and the Wildlife Trusts (www.wildlifetrusts.org). Our nearest SSSI, Bentley Station Meadow is owned by Butterfly Conservation and there are work parties there on the first Wednesday of each month as part of habitat management.

Do tell us about wildlife that you see in Froyle with or without photos by email to info@froylewildlife.co.uk or put on Instagram with [#froylewildlife](https://www.instagram.com/froylewildlife).

Barry Clark



Brown Hairstreak

AGM & Regenerative Farming talk 24 October 2025

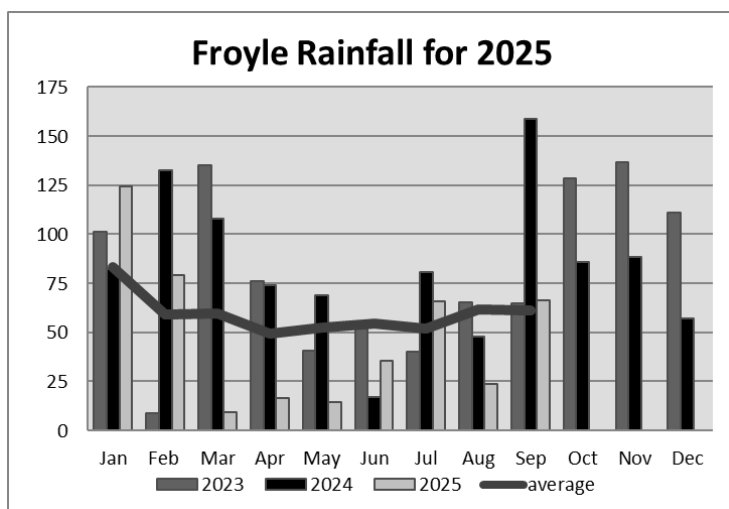
We had our AGM on Friday 24 October in the Village Hall. Barry Clark reviewed our activities in the year to 31 August, thanking those who had volunteered 299 hours to maintain and manage the Rec wildflower meadows and the Gid Lane wildlife pond, commenting on the rich diversity of flora and fauna which flourish as a result of the introduction of the pond. Deb Addison and Mark Crisp were elected as trustees following the retirement of Nigel Hughes and Jonathan Pickering.

Simon Porter of Penn Croft Farms, Crondall, delivered a fascinating talk on the benefits of Regenerative Farming and how he had introduced it. The basic concept of RF is to take back the condition of the soil to be better than it had been, with its condition and health being the most important contributor to the production of healthy plants and healthy food. It involves minimum disturbance of the soil, extended crop rotation and diversity, cover (mulch or straw), living roots to feed it, and the integration of livestock to provide additional nutrition. A tablespoon of healthy soil could contain up to 1 million living organisms, which need to be nurtured and encouraged. A key contributor to (and indicator of) healthy soil is the presence of earthworms. He distinguished between RF and organic farming: they are not the same – for example, he will spray off weeds to reduce soil disturbance and add necessary supplements to improve it. Introducing RF has taken Simon 25 years: the farm has been fully regenerative since 2014, which has led to an increase in wildlife (hares, marsh harriers, orchids, poppies etc), and also includes the field margins, hedgerows and woodlands. In 2018 he started producing wine, regeneratively on 5 hectares and traditionally on 12, achieving similar yields from each method, but with half the density and double the production from the regenerative element. He concluded that financially RF produces about the same results as intensive farming, with reduced revenue broadly matched by lower input costs. It was a most interesting discussion which was well received by the 39 members and visitors.

Jonathan Pickering

Froyle Rainfall for September, 2025

This year	66.5 mm	2.6 ins
Last year	158.5 mm	6.2 ins
Wettest September (2024)	158.5 mm	6.2 ins
Driest September (2003)	7 mm	0.3 ins
Long-term average for September – the 8th wettest month	61.2 mm	2.4 ins
Total rainfall for the year so far	435.5 mm	17.1 ins
Long-term average for the year so far	533.6 mm	21.0 ins



At 156 mm for the third quarter, we were pretty close to the long-term average (174.7 mm), as was Q1 (213 mm vs 202.3 mm LTA). It was only Q2 – c60% down - that caused the shortfall in the year so far. In similar years in the past – 1995, 1996, 2009, 2010 – in only one year (2009) was this recovered in Q4.



“The Umbrella Man”

WINTER CARE FOR YOUNG TREES



If you planted whips (young trees) this year, your trees are still in a delicate stage in their growth, and winter can be a challenging time for them. A high proportion of trees that are planted may not survive if the winter is very cold, or wet, or even dry: a little TLC will make all the difference.

Keep trees well-watered

Don't assume that because it's winter, young trees won't need water. Trees often need a little help keeping hydrated for their first few years of their lives. If it's not rained for a while, water thoroughly (about 6 litres per tree) using the drought pipe if you planted the tree with one. Conversely, if it rains heavily, dig a channel under the tree to drain away excess water.

Put down a mulch

Applying a 5-7 cm-thick layer of organic mulch around your trees (avoiding directly touching the trunk) serves a dual purpose, insulating the tree roots against extreme temperatures and keeping water in the soil.

Check your guards

Check tree guards in autumn to ensure they are effective (no bark missing, or twigs bitten or broken off), and not rubbing or cutting into the tree. If a guard is inadequate, add more protection, e.g. a taller tube to protect against deer. Repair or replace damaged guards, and if a guard is damaging the tree, adjust it. Young trees are especially vulnerable to damage from rodents and deer in winter, so it's a good idea to keep guards on young trees until they are about 3m tall.

Check your stakes

You should stake young trees planted in exposed areas for the first year after planting, so as to reduce the chance of breakage from strong winds. Check on the stake and the tie. It should allow the tree to sway, without rubbing on stake or tie. The trunk should not be under pressure from the tie.

Prune your trees

Careful formative pruning can prevent problems in later life – but shouldn't be done until the tree has gone into dormancy for the winter, to prevent new growth occurring which is too vulnerable to survive the colder winter months. If a tree has two competing leading shoots, removing one at an early stage to leave a single main shoot can save the tree from possible major branch failure in years to come. Remove broken or struggling branches close to the trunk, but without removing the bulge near the trunk (called the collar). Saw square to the branch to keep the cut clean, thus reducing damage to the tree's bark. The exceptions to winter pruning are cherry and plum trees, which should be pruned in June or July to prevent silverleaf fungal disease.

A little care now will have your young trees flourishing next Spring.

Sue Lelliott, Tree Warden



News from Bentley CE Primary School

It has been a wonderfully busy and exciting half term at Bentley! Our children have enjoyed a wide range of learning experiences both in and out of school. Classes have visited places such as Fort Nelson and the Watercress Line, bringing their history and science topics to life. We have also welcomed inspiring visitors, including the Young Shakespeare Company, who captivated pupils and helped them experience literature in a whole new way.

Whenever our children are out and about, we are always incredibly proud of how they represent Bentley — their enthusiasm, curiosity, and excellent behaviour always shine through.

Back in school, our Eco Team has continued to grow in size and impact. The children are full of creative ideas to make Bentley more sustainable and to help us all care for our world. It's inspiring to see how passionate our pupils are about making a difference.

We have also begun welcoming families of children due to start school in September 2026 for our open day sessions. It's been a pleasure to show them what makes Bentley such a special place to learn and grow.

Finally, if you know of any families looking for a place in Year 3 for next year, please do encourage them to get in touch — we'd love to welcome them into our Bentley family.

Vicky Hallett
Head teacher, Bentley CE Primary School



Wanted

For the Gift Stall We will have a box at the Meeting Place for two weeks beforehand or ring me and I will collect – Caroline Findlay 22019
email: carolinefindlay@hotmail.com

For the Deli Stall Fresh savoury or sweet dishes, cakes, biscuits, home-made chutneys, jams, marmalades or any other goodies are very welcome! Please ring
Susie Robertson 520820 email: sjrinfroyle@gmail.com or
Jo Mills 22384 e.mail: joannamills@yahoo.com

**Come and solve all your Christmas shopping in one location.
See flyer enclosed in the magazine for more info.**

FROYLE SMALL ADS

A reminder - Small ads are free to all Froyle residents (one per month).

So why not advertise items you no longer need, or are looking for, right here?

Or indeed services you can offer, or are trying to find?

Just email your text - and photo if you have one - to froylemageditor@gmail.com.



ALTON FOOD BANK PLEASE SUPPORT

Thank you for your continued support for the Alton Foodbank. Your generous donations have enabled it to meet the growing demands which it is seeing locally.

Please continue to support this amazing charity; it is particularly in need of the following items at the moment:

Tinned vegetables	Tinned meat
Rice (dry)	Sponge puddings (long life)
Tinned custard	Tinned meat (pies, stewing steak, hot dogs)
Tinned rice pudding	UHT milk
Bags of sugar	Antibacterial cleaning spray
Toilet rolls	Washing up liquid
Shower gel	Sanitary products
Conditioner	Shampoo

There is a donation box in the Village Hall, or you can drop off at Greenfields Cottage, Lower Froyle. There are also collection points in Bentley and Binsted churches, and at Alton Maltings where there is a drop box outside the main door.

If you have any queries, please call me.

Louise Marston
07785 350381



Wreath making workshop **Froyle Village Hall** **Wednesday 26 November** **2.00pm - 4.00pm**



All materials will be provided for you to have a fun afternoon creating your own stunning Christmas Wreath. Please feel free to bring along any favourite accessories you might wish to incorporate into your wreath.

There will be tea/coffee and mince pies. Tickets £15; spaces will be limited. You will need your own secateurs.

To book a place and more information contact Barbara Wheatley

Tel: 01420 520485 Email: barbara@thewheatleys.co.uk

Closing date 12th November



ST MARY'S CHURCH CHRISTMAS TREE FESTIVAL

Instead of our normal Christmas decorations, St Mary's Church, Froyle, have decided to decorate the church with multiple Christmas trees thus giving everyone in the village the opportunity to join in.

WE WOULD LOVE AS MANY TREES AS POSSIBLE.

If you or your children would like to take part, here are the **TREE RULES**:

- Trees can be large or small, real or artificial. (The majority of trees will stand on a window sill).
- Trees can be decorated in any way, including lights, which **MUST BE BATTERY**.
- Trees can be decorated in the Church (bring your own decorations) or at home and transferred.
- Trees can have a theme or should be beautifully decorated.
- Please Deliver to the Church either 19th or 20th December
- Trees to be removed 29th December



JOIN IN – HAVE FUN
FOR EVERYONE IN FROYLE
YOUNG OR OLD

For further information contact: Gill Bradley 01420 520484
gahbradley@gmail.com

ST MARY'S CHURCH NOTES

Vicar: The Reverend Matt Boyes 07469 270590 E: matt@benbinfo.co.uk
 Administrators: 01420 23339 E: admin@benbinfo.org W: www.benbinfo.co.uk



Church Wardens:

Simon Marshall 07734 214419
sm517@icloud.com

Jack Stephenson 01420 23216
romanhorse@hotmail.co.uk

Anna Friend: Sarah Roberts
 07831 294852 sarahfroyle@gmail.com

Benefice Pastoral Care

Nick Carter 01420 489122
nick.carter1945@outlook.com

Anna Chaplain:

The Rev Fran Harrison 07765 058593
annachaplain@benbinfo.co.uk

NOVEMBER SERVICES

Sun 2 Nov	9.30am	Binsted	Holy Communion & Children's Church
	11.00am	Oakhanger	Holy Communion
	6.00pm	Bentley	Praise
Sun 9 Nov	10.00am	Bentley	Remembrance
	10.50am	Binsted	Remembrance
	10.50am	Froyle	Remembrance
	10.50am	Kingsley	Remembrance
	6.00pm	Kingsley	Praise
Sun 16 Nov	9.30am	Froyle	Morning Worship
	11.00am	Kingsley	Holy Communion
	4.00pm	Froyle	Messy Church
Sun 23 Nov	9.30am	Bentley	Holy Communion & Children's Church
	11.00am	Binsted	Morning Worship
	6.30pm	Froyle	Choral Evensong
Sat 29 Nov	6.30pm	Froyle	Advent by Candlelight
Sun 30 Nov	11.00am	Bentley	Holy Communion

THE VIEW FROM THE VICARAGE

The clocks have gone back and the nights are drawing in. After a warm, dry summer; winter is coming.

We are blessed to live in a part of the world with changing seasons and seeing how the miracle of life in spring builds to the thriving abundance of summer, the slow beautiful maturing of autumn and the cold and dark of winter, before the cycle starts again.

It is important to spot the seasons and live in them and learn from them. We can't expect to reap a harvest in spring or to find daffodils in autumn. Everything has a time and a place. The writer of the ancient Book of Ecclesiastes said, "There is a time for everything, a season for every activity under heaven. A time to be born and a time to die, a time to plant and a time to harvest. A time to kill and a time to heal, a time to tear down and a time to rebuild." Ecc 3:1-3

Perhaps some of the anxiety we feel in life, comes from expecting a result in a season that can't provide. I'm not saying that we just sit back passively and accept things. God wants us to seek him, to pray to him and ask him for things as Jesus reminds us. The farmer knows that seed has to be planted in the hope of a harvest. There are things we need to do to prepare for the hoped outcomes, but God provides the increase.

What season of life are you in at the moment? I'm not just speaking about age. You can have winter seasons in your 20's and spring in your 80's. If lots of new possibilities are opportunities are opening up for you, then you are probably in spring. If things are not growing, despite all your efforts, then probably it's winter, but spring follows winter.

The church is exactly the same. It seems that for the Benefice, we are seeing the signs of spring. New people are joining us, new projects are taking off and those who saw us through the winter season are tired from keeping the fires going and deserve a rest. It is always exciting to see the new things God is doing. Not all the seeds will grow, but spring is a season of hope and possibility. As a nation we might say we are also still in the grips of winter. But spring is coming.

Our task, in whatever season, is to watch and pray. To see what God is doing and seek to act in accordance with it. My prayer for you all, is that you will see your season and have the faith to thank God for all that he has done, and the faith to trust for all that he will do. May God make you fruitful and bless you all.

Matt Boyes, Rector of Bentley, Binsted & Froyle

St Mary's News

After a terrific series of harvest thanksgiving events across the benefice in September and October – starting with a very happy breakfast in Froyle church on 21 September for participants in a combined harvest thanksgiving, messy church in a sukkah (those who weren't there may well ask...) and the christening of Otto Hatcher Mills – we have moved seamlessly into autumn, starting with another christening held on 19 October for Sloane Drake, supported by lots of family and friends.

And now we look forward to Remembrance Sunday on **9 November**, the Christmas Fair in Froyle church on **22 November** and our glorious Advent-by-Candlelight event on **29 November** – not to mention Messy Church in Froyle Village Hall on Sunday **16 November** - all promoted elsewhere in this magazine.

And then on to Christmas (already...?). The December magazine will have full details but look out for our Real Nativity event – Binsted's hugely successful and imaginative retelling of the Christmas story is coming to Froyle with a difference.... (see elsewhere in this magazine) and carol services in both Froyle (**14 December**) and Binsted (**21 December**).

Simon Marshall
Churchwarden

FREE



Sunday 16th November

Froyle Village Hall, GU34 4LG

4-6pm

Supper included



Come and join our Advent and Christmas preparations! We will be making decorations, marking stir up Sunday and telling the Nativity story. And ending with a yummy hot meal.



PEACE ON Earth

Autumn thoughts

As I've grown older, I've become more and more aware that many of us, myself included, tend to view the approach and arrival of autumn with some trepidation – I confess that I personally haven't always felt ready for the impending bareness of trees as they shed their leaves, or the letting go of the joys of long days, and I've been known to complain to anyone who would listen when the end of summer came! I used to see autumn, and of course the approach of winter, as an interruption to life and I often resented the necessity of letting go of the 'fun' of summer.

And yet, maybe because I've grown older, I welcome this season more willingly now. To me it's become a special season with a mystery all of its own, as life around us changes, moving on into new forms and shapes, in nature dying that it may live again. Macrina Wiederkehr wrote, "Autumn, with its unforgettable face of both acceptance and surrender, ushers in the sacrament of absence." And she goes on to say that this absence can be a blessing – our lives so easily become cluttered with many things, and this is the season that invites us to let go, to evaluate what is good to keep, and what perhaps we could relinquish in our lives.

There are so many forms of letting go that emerge out of our autumn surrenders – so many "falling leaves" that we seem to have to deal with. I think of parents letting go of their children as they head off to uni, or move away from home, entrusting them into Hands greater than their own; I think of for some the relinquishing of a lifestyle, and the necessity that comes to slow down; I think of letting go of unhelpful patterns of thinking that can cripple us and hold us in places where we have no hope of growing.

In John 12 : 24 Jesus tells us, "The truth is, a kernel of wheat must be planted in the soil. Unless it dies, it will be alone – a single seed. But its death will produce many new kernels – a plentiful harvest of new lives."

It reminds me of the story of two little girls who were helping their mum do some gardening and planting seeds. As they dug the holes, the younger girl said to her sister, 'I hate planting seeds. It reminds me of digging graves and burying people'. And her sister replied, 'Oh I don't think of it like that – I look forward to the time when they wake up and grow into beautiful flowers'.

During this season of autumn, I wonder what would be revealed to us if we were to look within both our cupboards and our hearts to see what we could discard, what we might live better without, and what we could perhaps let go of, or bury, in order to create space and opportunity for something even better, more beautiful, to grow in the spring?

Be blessed this beautiful autumn season of reflection!

*Fran Harrison
Anna Chaplain*

Remembrance Sunday

Sunday 9th November 2025

Services across our benefice:

Bentley

Church service at 10am, before moving to Bentley Memorial Hall for an Act of Remembrance.

Binsted

Act of Remembrance at 10:50am at the War Memorial outside the church, before moving into the church for a Remembrance service.

Froyle

Act of Remembrance at 10:50am at the War Memorial , before moving into the church for a Remembrance service.

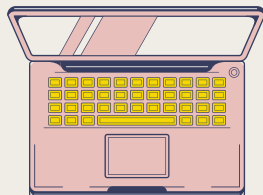
Kingsley

Act of Remembrance at 10:50am at the War Memorial outside the church, before moving into the church for a Remembrance service.



Work from home

at Bentley Church Hall



Come along to our 'working from home' sessions at Bentley Church Hall. We will have structured days with quiet times for focussed work through the day and the opportunity for a social lunch to beat the loneliness, share ideas, and cheer each other on. Our first session in October was a huge success with places booked for November already!

"The work from home session was really well organised, with 'quiet and chatty' sections and tea breaks and lunch at set times. It was lovely to meet new people in the breaks, nicer than working alone. There was no cost and no need to book. Lots of desks were available and each had a plug socket and comfortable chair. The hall is a beautiful building and there are lovely views to the garden at the back, which was an added bonus! None of the distractions of home were present which meant that I got lots of work done and left after lunch ready to tackle the next part of my day."

Jenny



Drop in
9am - 5pm

Dates:
18th November
2nd December
16th December

Bentley Church Hall
Church Lane
GU10 5NA

chat to Becky or Gemma
or email admin@benbinfro.org for
more info

FREE soup lunch or order
from Bentley Stores

Structured but flexible
work days

Tea & coffee

WI-FI

Warm space in winter

Advent by Candlelight



**Saturday 29 November, St Mary's Church,
Froyle, 6.30pm**

**As always, the pre-Christmas season in Froyle starts with our
beautifully atmospheric Advent by Candlelight.**

**This is a very special event. It is made up of a series of hymns,
anthems and readings. Do come along and join in, particularly if you
enjoy choral music and singing.**



CHRISTMAS SERVICES

SAVE THE DATES!

Saturday 29th November

6:30pm Froyle Advent by Candlelight

Sunday 21st December

4pm Christingle at Kingsley

6pm Carol Service at Binsted

Monday 22nd December

7:30pm Carols at The Star Inn, Bentley

Tuesday 23rd December

6pm Real Nativity at Froyle

Christmas Eve

4pm Christingle at Bentley

5:30pm Crib Service at Froyle

10pm Froyle Late Night Holy Communion

10pm Oakhanger Late Night Holy Communion

11:30pm Bentley Midnight Holy Communion

11:30pm Binsted Midnight Holy Communion

Christmas Day

9:30am Bentley Holy Communion

9:30am Binsted Holy Communion

11am Froyle Holy Communion

11am Kingsley Holy Communion



THE REAL NATIVITY COMES TO FROYLE

**TUESDAY, 23RD DECEMBER
6PM**



**INTERESTED IN PERFORMING?
Contact allimalone@sky.com to
register your interest.
NO EXPERIENCE NECESSARY.**

The Bourne Parish Choir & Waverley Singers
Sat 6 December 2025, 6pm



St Thomas-on-The Bourne, GU9 8HA

St Nicolas Britten

TENOR - PETER DAVOREN ORGAN - PHILIP SCRIVEN

CHAMELEON ARTS ENSEMBLE

CONDUCTORS - RICHARD PEARCE AND JORDAN THEIS

Tickets: £10 - £20 in advance, £22 on the door (if still available)

Students £5, Accompanied U16s free subject to conditions



ticketsource.co.uk/waverleysingers

waverleysingers.com

The Waverley Singers is a Registered Charity no. 284925



RETIRING COLLECTION IN AID OF LUNCH BAGS FOR CHILDREN



Professional Foot Care, Right in Your Community

Gentle, respectful treatment for:

- Diabetic foot health checks
- Verrucas (children and adults)
- Corns, calluses and hard skin
- Foot pain, bunions and plantar fasciitis
- Fungal nails and athlete's foot
- Recovery after injury or surgery
- Nail trimming and ingrown toenails
- Routine foot maintenance to stay comfortable

Supporting your **mobility, comfort and independence** — one step at a time.
Appointments held locally in village halls. No long NHS waits. No need to travel to town.

DBS checked • Qualified Foot Health Practitioner and Injury Rehab Specialist

Joanna DipFH BSc (Hons)

☎ 01420 343 130

✉ Joanna@BalancedBodiesSport.com

The Foot Health Clinic by Balanced Bodies
Bringing expert care to the heart of your community



SEPT

Froyle raised, grass finished
beef becomes available.
GO TO aion.farm
to preorder

Your local produce

15% off

for Froyle residents

Grass Raised & Finished

Local Froyle Raised

www.aion.farm

USE CODE: "Froyle"

"Enter 'Froyle' at checkout and
get 15% off your total order on
beef and lamb



Selective steaks on request. Email posture@aion.farm for requests.

www.aion.farm

✓ Grass Raised ✓ Grass Finished ✓ Local Produce ✓ Ethical & Sustainable



- Domestic / Commercial Wiring
- FuseBoard / Consumer Unit Upgrades
- LED Lighting & Fixtures
- Sockets & Smoke Alarms
- PAT Testing & Fault Finding
- Inspection & Testing
- New or Refurbished Builds
- Earthing & Bonding
- Electrical Surveys
- **All Work Guaranteed & Fully Insured**



Get in touch for your free estimate today:

Tel: 07917680479 (24 hrs)

info@e-tekelectrical.com

www.e-tekelectricalservices.co.uk



RACHEL'S HOMEOPATHY

*A complementary way to better health
Treating causes to eliminate symptoms*

Clinics in

ALTON - PETERSFIELD - FAREHAM

ON-LINE - HOME VISITS

RACHEL CHANCELLOR, RSHom. (Registered Homeopath)

Appointments: 07766-524 877 or rachel@rachelshomeopathy.co.uk

www.rachelshomeopathy.co.uk



Society of Homeopaths

The unrushed moments make all the difference

We've helped thousands of families stay safe, comfortable, and happy at home. Whatever situation you're facing, whatever the question, Home Instead is here to help



- Companionship Care – Matched Care Professionals for meaningful connections
- Home Help & Meal Prep – Clean, safe homes with nourishing, home-cooked meals
- Personal Care – Dignified support with bathing, dressing, and hygiene
- Mobility Support – Safe movement at home, including transfers and positioning
- Health Appointment Support – Help attending important medical appointments
- Community Engagement – Stay active with visits to local groups and outings
- Transportation – Reliable help getting to shops, friends, and appointments
- Medication Management – Support with timely and accurate medication routines

FLORENCE

The Barn & Coffee Shop

A local independent store offering a curated selection of homeware, clothing, and coffee.

Thoughtfully chosen pieces, a cosy café, and a warm welcome.

OPEN HOURS

Thursday – Sunday

9:00am – 4:00pm

📍 Hen & Chicken Pub

Upper Froyle, Alton, GU34 4JH

Follow our instagram for more updates @shopflorenceclothing

Email us - shopflorenceclothing@gmail.com

We look forward to seeing you!

What's On



Monthly Quiz

6th November from 7:30pm

Max 6 people per team & prizes for the winner. Free entry

Food Of The War Supper Club

11th November from 7:30pm

Enjoy a 3-course dinner of familiar
favourites, made the way they were back
in the day

Monthly Bingo

13th November from 7:30pm

At £2 per player, grab some friends and come along to try
your luck at winning some fabulous prizes

Winter Gin, Spritz & Cocktail Masterclass

27th November from 7:30 pm

£25 per person. Booking essential

We have 5 beautiful rooms

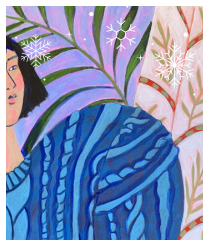
A celebratory trip, an escape to the country or a long weekend away? Whatever your plans,
book your stay with us today!

Butcombe Loyalty Members can enjoy 20% off stays when booking direct.

Not a member? Sign up today at butcombe.com/loyalty.

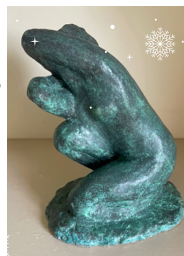
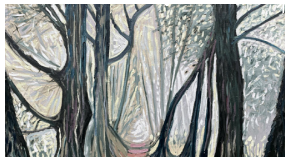
T&Cs apply.





athertongreenart

Creating vibrant contemporary collections



Join us for our Winter show

from Sunday 23rd November & then
Thursdays - Sundays until December 7th 11am - 4pm
Other days and times by appointment Be inspired by
our unique collection of contemporary art including
paintings, prints, sculptures and ceramics by a
selection of artists in our gallery at Farrington Place.

Art Gallery: Atherton Green Art is situated in a
lovely Victorian home in the village of Farrington in
Hampshire and brings the exciting talents of a select
group of emerging and mid career artists to collectors
and new buyers of art.

*'Whether you want to start a collection, build a collection
or commission a piece of art, we are here to help'*

Work is available online at www.athertongreen.art



Farrington Place
Church Road, Upper
Farrington, Alton,
Hampshire, GU34 3EH
+44 (0) 7890 098 036
sue@athertongreen.art
@athertongnart

The Beehive Montessori pre-school.
Settings in the villages of Shalden and Lindford
Providing high quality education in a nurturing environment
with experienced staff.



Funding for 2, 3 and 4 years available.
For further information call Annette or Jan 07795 270184
or join our Facebook pages.
www.beehive-alton.co.uk



ACORNS B&B



Acorns is a self-contained guest cottage, located in the picturesque village of Lower Froyle.

It has its own entrance, parking, and a south facing private terrace which offers beautiful views across open fields.

There is a generous bedroom with a super-king sized bed (two singles can be arranged on request), comfortable sitting room, together with a small but very well-equipped kitchen and a luxury shower room.

Fresh bread and milk, juices, jams, cereals and yoghurts will be provided for your breakfast along with a selection of teas and coffees.

Consistently awarded 'guest favourites' on Airbnb.

Contact Alice for further information on
07768 165233 or ghins@gmail.com
Instagram @acornsbnb



Move with Tegan

Froyle Village Hall
Ryebridge Lane, Lower
Froyle, Alton GU34
4LG

Pilates in Froyle

Monday

09:30 Dynamic Mat

10:30 Gentle Mat

Wednesday

Mixed Mat

18:30-19:30

For enquiries, contact Tegan on
07761 209998 or email
teganhansensa@gmail.com.

£10 per Pilates Class
£50 for block of 6 classes



Made-to-Measure Curtains, Blinds, Upholstery
Interior Design
Concept to Completion Service
Extensions, Conversions & New Builds

Scan to book
your FREE
design
consultation




AWARD-WINNING INTERIOR DESIGN

On Your Doorstep



Over 30 years
experience!



Award-winning
customer service



Inspirational
designs



www.renaissanceinteriorshw.co.uk

hello@renaissanceinteriorshw.co.uk 01252 220 400

Virginia Villas, High Street, Hartley Wintney, Hampshire, RG27 8NW



Trenbo's

Handyman - Electrical - Maintenance

07376908787
trenbosjobs@gmail.com

Fine Framing

Picture Framers

4 Weyside Park Newman Lane

Alton GU34 2PJ

Tel: 01420 82324

Email: info@fine-framing.co.uk

Opening Times:

Tuesday-Friday 9.30am-5.00pm

Saturday 10.00am-12 noon

Closed Monday



**DOWNIE &
GADBAN**

Solicitors & Notary Public
Est. 1905



**Residential Conveyancing - Wills - Power of
Attorney - Probate - Commercial Property -
Property Development - Dispute Resolution**

Instant conveyancing quotes available on our website
www.downieandgadban.co.uk

Why Choose Us?

We pride ourselves on being friendly, approachable and professional. We have been in our current building at the end of the High Street in Alton (close to M&S, The Ivy House and The White Horse) since 1962 and have been serving generations of families in the Alton area since 1905.

To discuss how any of our team could help you please give us a call and we will be happy to discuss your requirements.

Tel: 01420 82879

Email: info@downieandgadban.co.uk

Website: www.downieandgadban.co.uk

Andrew Wood

Heating and Plumbing Engineer



Gas Safe No. 15316



- BOILER CHANGES
- BOILER SERVICING
- POWER FLUSHING
- CENTRAL HEATING SYSTEMS
- GAS INSTALLATIONS
- GENERAL PLUMBING

For free estimates or advice telephone **Bentley (01420) 22637**

Paul Pascall

Painter and Decorator
Estimates and References
Available

01252 328965 Evenings
07803 723530 Daytime



Accepting new patients

- General Dentistry
- Dental Emergencies
- Dental Implants
- Adult Orthodontics
- Teeth Whitening
- Sedation
- Dental Acupuncture

The Clinic is on the ground floor so is easily accessible. Free on-site parking also available.

For more information please visit our website or get in touch



01420 550616

Shine Dental Clinic, Unit 10A Mansfield Business Park, Medstead, GU34 5P2,
info@shinedentalclinic.co.uk

Advertising rates 2025/2026

For Froyle businesses: £40+VAT/year, £24+VAT/half year for advertisements of **up to half a page/a third of a page on inside covers.**

For non-Froyle businesses: £60+VAT/year, £36+VAT/half year for **up to half a page/a third of a page on inside covers.**

For both residents and non-residents: £120+VAT/year, £72+VAT/half year for **a full page, £137.50+VAT/year for inside cover full page.**

The advertising year begins with the April edition, and the half-year with either the April or October edition.

All advertising must be requested and paid for through the Parish Clerk at froylemageditor@gmail.com and copied to clerk@froyleparishcouncil.co.uk.

We are pleased that local trades and service providers advertise with us and we do hope that you support them. However we do not check or endorse them in any way.

NOTES TO CONTRIBUTORS

The magazine is published in A5 size, portrait orientation, both online and in print. The online version is in colour but the printed version is in black and white.

Posters/Adverts

If you want a full page design your page in portrait layout. For half pages use landscape. You can send your copy in any size but it will be resized to fit on A5 portrait. To see how it will look is to design a full page as A5 portrait and a half page as A6 landscape.

Please submit artwork and copy as a JPG/PNG picture or PDF file, with, if available, the original Word or Powerpoint document and any photographs.

Articles

Please send text and pictures separately as well as in your complete article. As a rough guide a page is about 500 words – with no pictures.

Pictures should be high resolution JPEG or PNG files.

General

All magazine contributions should be submitted to froylemageditor@gmail.com. Please refer to the back cover for next month's magazine deadline.

In the event of any question over including or excluding any item or part of an item, or in relation to any other matter, the Editor's decision is final.

Village Events November 2025

Sun	Mon	Tue	Wed	Thu	Fri	Sat
						1
2 1600-1800 Life drawing	3 Recycling & glass	4	5 1800 Bonfire Party	6	7 1000-1200 Meeting place	8
9 1050 Remembrance Service	10 Rubbish	11	12	13 Garden waste	14 1000-1200 Meeting place 1930 Gardening Club	15
16 0930 Morning Worship 1600 Messy Church VH	17 Recycling & glass 1830 VH Committee 1900 FPC	18 10-1200 Life drawing	19	20	21 1000-1200 Meeting place	22 1100-1400 Christmas Fair Church
23 1830 Evensong	24 Rubbish	25 1930 Froyle Wildlife	26	27 Garden waste	28 1000-1200 Meeting place	29 1830 Advent by Candlelight
30						



PAX HILL

Care home for the elderly

Pax Hill provides person-centred care for Residential, Dementia, Nursing, and Palliative care needs in modern, comfortable accommodation.

Two purpose-built care homes are set in nine acres of beautiful gardens in the picturesque village of Bentley.

For more information or to discuss your individual needs, please call Angela.

01420 525882 | mail@paxhill.co.uk | www.paxhill.co.uk



Physiotherapy

In the centre of Bentley
by

Pippa Blizzard

Chartered Physiotherapist
MCSP HCPC BAHT AACP

physiotherapy@pippa-blizzard.co.uk 07714 239644 www.pippa-blizzard.co.uk




SILVERWING CARS

Call Tony on 07971 859947

Reliable Professional Taxi Service
Advanced Bookings Advised


Froyle Directory

Froyle Parish Council  www.froyleparishcouncil.org.uk


Andrew Potter, Clerk  clerk@froyleparishcouncil.org.uk ☎ 07979 030571

Froyle Residents Email List email to join  clerk@froyleparishcouncil.org.uk

East Hampshire District Council www.easthants.gov.uk

Tony Costigan, District Councillor  tony.costigan@easthants.gov.uk ☎ 07770 666896

Hampshire County Council www.hants.gov.uk

Mark Kemp-Gee, County Councillor  mark.kemp-gee@hants.gov.uk ☎ 07748 945947


Froyle Village Hall  www.froylevillagehall.co.uk

Chair: Gillian Paul: chairman@froylevillagehall.co.uk ☎ 07774880885

Bookings: Sarah Zorab  bookings@froylevillagehall.co.uk ☎ 01420 520361

The Meeting Place - Fridays 10-12 at the Village Hall Susie Robertson ☎ 01420 520820

Froyle Gardening Club  www.froylegardeningclub.co.uk


Geoff Hawkins  info@froylegardeningclub.co.uk ☎ 01420 88176


Froyle Wildlife www.froylewildlife.co.uk - Barry Clark ☎ 01420 23520

Tree Warden Sue Lelliott  tree.warden@froyleparishcouncil.org.uk ☎ 01420 22015

Speedwatch Group Gordon Mitchell  champersg@hotmail.com ☎ 01420 23851


Police Community Support Officers ☎ 101

PC Alex Routt  alex.routt@hampshire.police.uk or 07891 484 670

PC Jess Hornsby  jessica.hornsby@hampshire.police.uk

Froyle Archive www.froyle.com/archive


The Benefice of Bentley, Binsted & Froyle  www.benbinfro.co.uk

Matt Boyes, Vicar -  matt@benbinfro.co.uk ☎ 07469 270590

Sarah Roberts, Anna Friend -  sarahfroyle@gmail.com ☎ ☎ 07831 294852

St Mary's Church Flower Rota - Gill Bradley ☎ 01420 520484

Bentley, Binsted and Froyle Care Group - Bookings ☎ 07775 458873

 **Froyle on Facebook** - *Froyle Residents, Froyle Advertising*

Key: ☎ Telephone  Email  Facebook  WhatsApp

NOVEMBER DEADLINE: FRIDAY 21 NOVEMBER 2025

For Notes to Contributors, please see page 39