

# Froyle Village Magazine



October 2025

No 522

<https://www.froyleparishcouncil.org.uk/village-magazine>



## TRAVEL WITH MEON

MEMORIES THAT LAST A LIFETIME



*Award-Winning Travel Agent  
on your doorstep!*

Meon Valley Travel, 32 High Street, Petersfield, Hampshire GU32 3JL

Telephone: 01730 711010 | Email: [leisure@meonvalleytravel.co.uk](mailto:leisure@meonvalleytravel.co.uk)

[www.meonvalleytravel.co.uk](http://www.meonvalleytravel.co.uk)



## NEWS & VIEWS

Parish Clerk - Andrew Potter

E: [clerk@froyleparishcouncil.org.uk](mailto:clerk@froyleparishcouncil.org.uk)

W: [www.froyleparishcouncil.org.uk](http://www.froyleparishcouncil.org.uk)



The Parish Council (PC) met on 15 September with 15 residents joining the meeting as well as the owners of Froyle Park wedding venue. The next meeting is on Monday 13 October at 19.00 in the Village Hall. A summary agenda will be displayed prior to the meeting with the detailed agenda displayed on the PC Website. All residents are welcome to attend and, if they wish to raise any matter, the subject should be notified to the Clerk five days in advance of the meeting.

Many of the residents who joined the meeting took the opportunity to describe their experience of nuisances at the Froyle Park wedding venue to the venue owners and our District Councillor. These nuisances largely focused on noise during an event and the clear up afterwards lasting into the early hours, and guests undertaking antisocial behaviour such as openly smoking cannabis. It was also noted that the private Treloars Memorial Garden was being used by guests for drinking and smoking in. The overriding message from those present was 'enough is enough' as, living with these issues virtually every day for the past few months, was destroying any chance of a quality of life. They had 'reached the end of their tether' with EHDC seemingly unable to identify any evidence to restrict the venue operations, despite regularly being sent such information. Our District Councillor advised that residents must now seek a solution outside of EHDC such as taking the case to the Magistrates Court. An application by the residents for a full licence review was also possible. The venue owners insisted that they always operated within the terms of their licence, were an award-winning wedding venue entitled to have weddings 365 days a year and, as also claimed by EHDC, were only aware of a few complaints. The PC will provide advice to the residents as they continue with their next course of action. It was also recommended by our District Councillor that the Police should be called whenever incidents of antisocial or criminal behaviour on private property were witnessed.

The other main issue on the agenda of interest to residents was the project to upgrade the Recreation ground facilities. This has progressed over the last month, including using the input provided by those visiting the PC stand at the fete. A Mission Statement has been developed stating the objectives of the project as *"To re-energise Froyle Recreation Ground as a dynamic, inclusive and sustainable community hub - where every generation and ability can connect, play, relax and grow together, while celebrating our village heritage and nurturing the natural environment."* This was adopted by the PC as the basis for developing the scope

of the project and seeking grant funding. The key objective is that the facilities provided are inclusive for all irrespective of age or physical ability. An initial short list of amenities to be located in different areas of the Rec was discussed and agreed. A series of consultation meetings with residents will be held later in the autumn to provide information and obtain feedback to allow the scope of the project to be finalised. Our District Councillor expressed his support for the project and encouraged the project team to progress with grant applications and seek Planning input as soon as possible.

The amenities will also now include the replacement for the pirate ship as it was considered better to seek grants for one large project, even if completed in phases, rather than address the pirate ship replacement as a stand-alone project. The zip line is also causing concern to the playground inspectors as three of the supporting legs are showing severe rot which could make the structure unsafe with the risk of collapse while being used. The PC recognises how much the zip line is enjoyed by residents and their families but, based on the report received, considered it had no alternative than to take the zip line out of use until repairs could be completed.

Stephen Inskip advised that he was resigning as the Froyle Neighbourhood Watch Scheme Co-ordinator, and a replacement is now urgently sought. If you are interested or would like further information, please contact Cllr Alex Roberts [alex.roberts@froyleparishcouncil.org.uk](mailto:alex.roberts@froyleparishcouncil.org.uk) or the Clerk.

The PC was informed that the new footpath map to be located on the wall of the Pavilion facing the car park has now been delivered and will be erected shortly. The PC is confident that this map will be a useful addition for residents and visitors wishing to explore the beautiful countryside surrounding the village and are grateful to our District Councillor who provided a grant that covered most of the cost.

On other matters, there were only five planning applications received this month relating to tree works or procedural matters such as listed building consent. Following an HCC consultation on the Local Government Restructuring, it is being recommended that Basingstoke and Deane, East Hampshire, Hart, Rushmoor and Winchester form a mid-North Unitary Authority. Central Government will decide on which local government model(s) to consult the public on later this year, before making a final decision in 2026. For more information visit [www.easthants.gov.uk/lgr](http://www.easthants.gov.uk/lgr).

As always, don't forget to visit the Village website to find out news and information about activities in and around Froyle of interest to residents.



# Froyle Bonfire Party

5 November '25

Bonfire  
from 6pm  
Fireworks  
from 7pm

Mulled Wine  
Hot Dogs  
Burgers  
Bucket collection

Come and help build the bonfire  
Sunday 2 November at 9.30am.



Bookings:  
Sarah Zorab  
01420 520361

[www.froylevillagehall.co.uk](http://www.froylevillagehall.co.uk)

As we approach the autumn, in my view the best season of the year, there is a lot going on in the village hall, and where better to start than to congratulate the Gardening Club and all the volunteers for a wonderful autumn show. Thank you also to Andrea Kozak for taking some fabulous photos which we plan to use to update our website and social media presence.

### Volunteering

The best part about this job is witnessing firsthand the generosity of so many in our village and I would like to start with a big thank you to those of you who responded to our request to join our pool of volunteers. It's never too late to get involved, however big or small, and it's a great way for anyone new in the village to get to know fellow villagers. Please reach out to David Birn at [dabirn@gmail.com](mailto:dabirn@gmail.com) if you'd like to lend a hand.

### 100 Club

Are you aware of the Village Hall's 100 Club? It is a great way to support our activities and there are pretty good odds of winning cash prizes as well. Please see the article on page 9 from committee member William Knowles, in which he explains everything you need to know.

### Upcoming events

- Car Boot Sale. Saturday 25 October, 9.00am-Noon. (Sellers' set-up starts at 8:30am.)
- Bonfire and Fireworks - Wednesday 5 November from 6pm (we'll build the bonfire on Sunday 2 November starting at 9.30am. All volunteers welcome!).

### Maintenance and Cleaning

The good news is that the hall is used by a wide variety of users. The bad news is that frequent usage means that it is not always in the pristine condition to which we aspire. If you find something that needs fixing or something that isn't quite as clean as it should be, please email Nick Whines [secretary@froylevillagehall.co.uk](mailto:secretary@froylevillagehall.co.uk) so we can get it taken care of.

Lastly, we would like to thank the Anchor for allowing us to use their meeting room for our meeting this month as the Parish Council was on the same night. Moving forward we will aim to avoid both meetings happening on the same night!

*Gillian Paul*



# October Activities at the Village Hall

<b>Dynamic Pilates</b>	<b>Monday 6, 13, 20 Oct</b>	<b>9:30 – 10:30am</b>
<b>Gentle Pilates</b>	<b>Monday 6, 13, 20 Oct</b>	<b>10:30 – 11:30am</b>
<b>Mixed Pilates</b>	<b>Wednesday 8, 15, 22 Oct</b>	<b>6:30pm – 7:30pm</b>

Move with Tegan. £10 per class, £50 for a block of 6.

For bookings or more information contact Tegan on 07761209998 or  
teganhansensa@gmail.com

<b>Meeting Place</b>	<b>Friday 3, 10, 17, 24 Oct</b>	<b>10am - Noon</b>
----------------------	---------------------------------	--------------------

**Note that the Oct 31<sup>st</sup> meeting place will be held at St Mary's Church**

Join us for delicious homemade cakes, hot drinks and good conversation.

Everyone welcome.

<b>Life Drawing</b>	<b>Sunday 5 Oct</b>	<b>4 - 6pm</b>
	<b>Tuesday 21 Oct</b>	<b>10am - Noon</b>

Try your hand at drawing the unclothed human figure from professional models. Untutored. Beginners welcome. Bring your own materials.

£10 cash at the door. dabirn@gmail.com for more information or to RSVP.

<b>Garden Club</b>	<b>Friday 10 Oct</b>	<b>7:30-9pm</b>
--------------------	----------------------	-----------------

"Wildflower Hot Spots of The World" A talk by Carol Watson about hiking and photography featuring images of wildflowers she has collected during her travels. What's not to love?

<b>Parish Council</b>	<b>Monday 13 Oct</b>	<b>7 - 10:30pm</b>
-----------------------	----------------------	--------------------

Agenda: <https://www.froyleparishcouncil.org.uk/your-council/agendas-and-minutes>.

<b>Car Boot</b>	<b>Sat 25 Oct</b>	<b>9am-Noon</b>
-----------------	-------------------	-----------------

Sellers: £10/car £15/van Buyers: £1/person

Sellers set up from 8:30am

Inside if it rains. Coffee Tea, Cakes & Bacon Butties will be on offer



# The Meeting Place

This takes place every Friday morning, generally in the Village Hall (with the exception of the last Friday of this month, 31 October, when it will be held in the Church).

Please let us know if you would like a lift to the Church.

We serve hot drinks and homemade cakes with squash for children from 10.0am to 12 noon. There are books and jigsaws to borrow and sometimes local garden produce for sale.

## October Kitchen Helpers

(No need to be at the Hall till 10.00am)

3rd	Alex Roberts
10th	Sue Sharman
17th	Sue Carr
24th	Nigel Southern
31st	Sarah Roberts <b>NB in the Church</b>

## October cake bakers

3rd	Sarah Larwood	Alice Ghinn	Sarah Basey
10th	Mary Chaplin	Caroline Findlay	Gina Kemp
17th	Maureen Fry	Jenny Matthews	Tina Henderson
24th	Barbara Starbuck	Tina Massam	Gill Bradley
31st	Sally Turville	Rachel Chancellor	Alli Malone

Please organise swaps amongst yourselves if possible and let us know, or contact us if you have a problem. Please let us know if you can't bake for any reason, we can freeze cakes made in advance! It is helpful to know what you are baking so we get a good selection! Cakes can be left in the porch at Wykeham House, Lower Froyle on Thursday and before 9.30 on Friday or brought to the Hall before 10.00 on Friday.

Gill Bradley 520484  
[gahbradley@gmail.com](mailto:gahbradley@gmail.com)

Susie Robertson 520820  
[sjinfroyle@gmail.com](mailto:sjinfroyle@gmail.com)

Jenny Gove 23697  
[govejenny@gmail.com](mailto:govejenny@gmail.com)





# ***THE FFQ***

## **The Fantastic Eroyle Quiz**

in aid of **Asthma + Lung UK**

**Saturday 18<sup>th</sup> October** – Froyle Village Hall

**\*6.30pm for prompt 7.00pm start \***

Tables of **6** max

(we will aim to put smaller numbers together into tables of six)

**Tickets £10 each to include supper**

**Cash Bar**

**Raffle**

To book please contact

Caroline Findlay 22019 or 07973 345306

[carolinefindlay@hotmail.com](mailto:carolinefindlay@hotmail.com)

Come and join in to help us raise money for this very  
special charity

# CAR BOOT



**SAT 25 OCTOBER**  
**9am - Noon**

sellers set up from 8:30am | indoors in case of rain

**FROYLE REC & VILLAGE HALL**

**Sellers: £10/car £15/van**

**Buyers: £1/person**

Coffee, Tea, Cakes & Bacon Butties will be on offer!

**To support Bonfire Night  
and other Village Hall Events**

## **FROYLE 100+ CLUB - What everyone in Froyle should know!!**

Background: The Froyle 100 Club was started in 1982 as a relatively painless and entertaining way to raise money for the building of the current village hall and its subsequent maintenance.

Who can join and what it provides: All adult (18+) Froyle residents can join. You pay an annual subscription amount and receive a number. A monthly draw takes place at the 'Meeting Place' on the first Friday of the month. The first four numbers drawn each receive a small cash prize (currently £30, £15, £6 and £5 respectively). It is designed to pay out in prize money each year roughly half of the total annual subscriptions (not bad odds...). The other half goes to the Village Hall.

What subscription costs: The current annual subscription amount is the princely sum of £12 (intended to be thought of as £1 per month). It has not changed since the Club's inception in 1982... Nonetheless, over the years the 100 Club has raised about £25,000 for the Village Hall. It is a significant contributor to the Village Hall's wellbeing. Think how much more it could achieve if we could (a) increase the subscription amount to reflect at least in part the effect of inflation since 1982; and (b) increase the membership (currently at 110), all the while still paying out half the takings in prizes, the values of which will be increased proportionately.

So..... The plan is to increase the annual subscription amount from the start of 2026 to £24 (still less than the effect of inflation since 1982), and to encourage a much wider cross-section of the Froyle community to subscribe. We hope this will enable us to at least double the prize money and the benefit to the Village Hall.

How to subscribe: Current subscribers who pay by standing order and who are happy to continue at the new rate will need to instruct their bank to cancel their existing standing order and set up a new one for £24 payable on 1 January 2026 and annually thereafter. This is a bit of extra admin, I'm afraid, but not difficult – even for me.... New subscribers (or any cash subscribers who wish to pay by standing order) should (a) ask me for a number, and (b) set up a standing order in the same way. If, say, the number allocated to you is 50, you should use as a reference for your payments 100Club50. Subscriptions by cash are welcome, but standing orders are preferred!

The Froyle Village Hall's bank account details are:

**Name: Froyle Village Hall; Sort code: 30-90-15; Account number: 01305140.**

When to subscribe: 1 January 2026 will creep up on us very quickly, SO PLEASE FOCUS ON THIS IN THE COMING WEEKS. You can, though, join at the beginning of any month by paying an amount for the rest of the year pro-rated on a monthly basis. £24, like £12, is designed to be readily divisible into monthly amounts (our Treasurer was keen on this...).

Hang on – what about.....? Any questions, please call/message/email me or any other member of the Froyle Village Hall Committee.

*William Knowles*

[wbk@wbknowles.com](mailto:wbk@wbknowles.com); 07775 928933



## Froyle Wildlife

### Regenerative Farming Talk

Simon Porter, Penn Croft Farm

Friday 24 October at 7.30pm, Village Hall

Simon will be explaining how Regenerative farming has the potential for the first time to produce the needed quantities of high-quality food to feed the world, whilst reducing inorganic sprays and fertilisers. At the same time, Regen farming can successfully store atmospheric carbon in the soil, improve wasteful water runoff and reduce harmful leaching of pesticides into our water supply. Regen farmers are also seeing a return in the numbers of beneficial insects and red-listed birds. Sounds too good to be true? Come and find out how it has been working successfully on a nearby farm for over 20 years. There will be time for your questions during the talk.



*Field edge*

There will be a brief AGM for Froyle Wildlife before Simon's talk starts. All welcome to the talk on Friday 24 October. Froyle Village Hall, doors open 7pm, for start at 7.30pm, refreshments. £3 non-members.

*Jayne Fisher*

### Dew pond restoration

Currently this historic pond in Upper Froyle dries out every summer before amphibians can complete their breeding life cycle. A group of volunteers made a good start in September to restore the Dew pond, by digging out a quadrant. The silt was more difficult than anticipated to remove because of buried stones. The plan is to monitor the pond over the next year to see if water is retained for longer. We can then repeat the digging on another quadrant.



*Dew pond restoration*

We found buried metal including pieces of iron railing, rusted pipe as well as old broken bottle glass, a modern ring pull and a small rusted iron cleat. Sue from Upper Froyle metal detected the spoil and found a copper coin. The coin was a worn George II half penny, the date was very difficult to read but was probably 1747. So nearly 280 years old!

## Wildflowers on Froyle Rec.



### *Rec wildflower planting*

year. Seeds were also grown in pots to supplement those sown directly in the ground. About 50 pot grown wildflowers were planted out recently by volunteers.

Here is a list of the perennials grown from seed:- Agrimony; Betony; Lady's Bedstraw; Meadow Crane's-bill; Field Scabious; Rough Hawkbit; Musk Mallow; Sainfoin; Salad Burnet; Selfheal; Bulbous Buttercup; Sheep's Sorrel; Red Campion; Wild Carrot; Meadow grass mixture by Emorsgate EG6; and from plants -cowslips, marjoram.



*Musk mallow*

## Volunteering opportunity?

Froyle Wildlife is a registered charity run by a small group of trustees who meet 3 times a year to organise activities, walk and talks. We want to find two new trustees this year. Please let me know if you can help to support our local community and wildlife. For more information contact Barry Clark 01420 23520 or email [info@froylewildlife.co.uk](mailto:info@froylewildlife.co.uk).

## Date for your diary

Tuesday 25th November, Beaver and Water Vole Reintroduction, talk by Dave Elliot, 7.30pm Froyle Village Hall.

Do tell us about wildlife that you see in Froyle with or without photos by email to [info@froylewildlife.co.uk](mailto:info@froylewildlife.co.uk) or put on Instagram with [#froylewildlife](https://www.instagram.com/froylewildlife).

*Barry Clark*



## The Autumn Show



The Village Hall was all aglow  
As Autumn colours filled the show.  
Judging here's a tender art  
Not just measure, weight or chart.  
John Negus's judging's very fair  
He gives awards with thought and care.  
Apples shone with Autumn pride  
He turned each one -a bruise to hide?  
Chrysanthemums glowed in every size  
Jane Harrap's pom poms won the prize.  
Roses blazed like Autumn flames  
Prizes were won by Jenny and James.  
Domestic goddess Julie Southern  
Baked the winners in her oven.  
The Floral art was quite a sight  
Vivienne won with 'Cook's Delight'  
All the fruits of Autumns store  
Gleamed on Brenda's miniature.

When voting slips were added up  
Rosemary won the creative cup.  
Husband Geoff, our inspiration  
Took a prize in every section.  
A photo finish by one tick  
Gave the picture prize to Nick.  
With twisted stalk and orange glow  
Katie's pumpkin stole the show!  
With Jenny, Gill and Barbara pouring  
Tea and cakes kept us going!  
The Annible's won in every field  
George took home the Family Shield  
Lizzie made it all add up  
And Geoff presented every cup.  
Thank you entrants one and all  
Your contributions filled the hall  
With such a brilliant display  
We all enjoyed a fruitful day.



*Froyle Gardening Club*





## *Froyle Gardening Club*

### **October in the Potting Shed**

After the long hot summer, the lawns are not at their best. Removal of any thatch is a good start to allow the rain to penetrate the soil. Underneath the thatch the soil can be very dry as it has stopped the rain penetrating down to the soil. Roughen up the soil surface, add some top soil and then mix the fresh grass seed into the surface, water and then cover to protect the seed from birds.

Due to the warm soil and rain any seeds in the soil have germinated rapidly, so get out with the hoe and keep on top of any weeds. (My motto is 'Never let a seed see a Sunday'.) The germination of the weed seeds should be a signal to us to sow our hardy annuals. Seeds such as Sweet Peas, Ammi majus (Bishop's Weed), Cornflowers, pot marigolds, love in a mist and honesty. In the vegetable garden we can be ready to sow broad beans and plant onion sets for cropping next spring.

In the border you need to leave stems and seed heads for insects and birds to feed on during the winter. Hollow stems are great for insects to over winter in safely away from predators. Early summer flowering plants can be divided up at this time of the year. The late flowering herbaceous plants can be done in the spring.

Make sure that you have plenty of organic matter for applying to the soil this autumn and winter. This will help hold water in the soil which will be valuable if we have a repeat of this year's weather pattern next year. Organic matter will also improve the soil biodiversity which will help the flora and fauna in the soil and in our gardens, making them mini nature reserves.

Talking of water, what about investing in more water butts? South East Water have discounts on various sizes of water butts. You pay for the water if it comes out of a tap: it is free from your water butt and it is better for the plants.

*Geoff Hawkins*

### **October Meeting**

**My Wildflower hot spots of the world – Carol Watson**

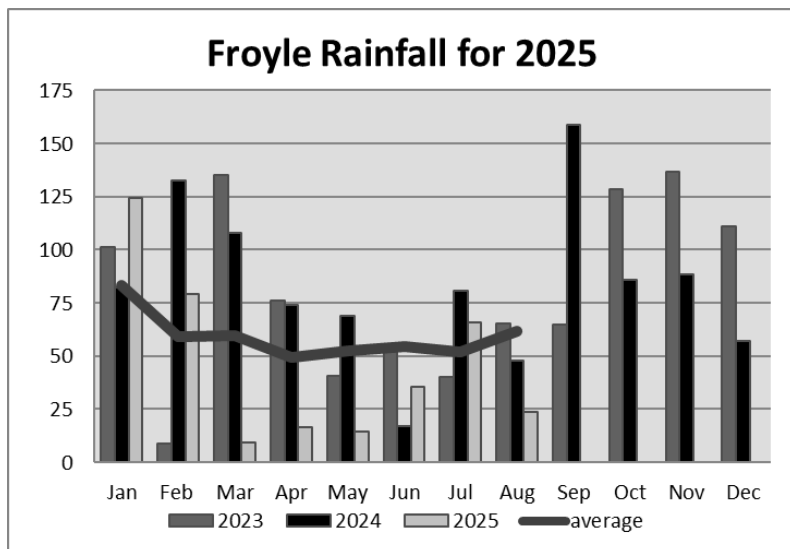
**Friday 10 October 7.30 pm**

A return for Carol Watson who is giving us her 'Wildflower Hotspots' presentation. It is one of her favourites and encompasses so many trips she has made around the world, hiking and photographing wild flowers.

# Froyle Rainfall for August 2025

This year	23.5 mm	0.9 ins
Last year	48 mm	1.9 ins
Wettest August (2001)	134 mm	5.3 ins
Driest August (1995)	3.5 mm	0.1 ins
Long-term average for August - 5 <sup>th</sup> wettest month*	61.5 mm	2.4 ins
Total rainfall for the year so far	369 mm	14.5 ins
Long-term average for the year so far	472.4 mm	18.6 ins

(\*5th driest on a per diem basis)



At 125 mm total for the summer months (June-August), most will not be surprised to learn that 2025 was the fifth driest summer for 25 years. But each of those other four years (2003, 2006, 2013, 2022) all had subsequent very wet winters. You have been warned...!



**“The Umbrella Man”**

## Autumn Pasta Pleaser

I have just got back from Tuscany, where the funghi season has got off to a flying start, with delicious dishes made from porcini and other wild mushrooms on every Trattoria menu.



This ragu recipe is not authentic Tuscan, but it is a wonderful, satisfying way of celebrating mushrooms – and it's vegetarian, too.

For 4 to 5 servings you need: 1 tbsp olive oil, 1 each finely chopped carrot, onion, stick of celery and clove of garlic, about 150g chestnut mushrooms, chopped, 125g Puy lentils, 75ml red wine, 400g skinned chopped tomatoes (tinned is fine), 2 heaped tsp tomato puree, a scant half litre vegetable stock, 1 bay leaf, salt and black pepper, small handful fresh basil.

Heat the oil in a large pan and gently fry the onion, carrot and celery until soft and golden, then add the garlic and mushrooms and cook until the mushrooms are starting to give up their juice.

Then add all the other ingredients except the seasoning and the basil and stir well. Cover and cook gently, stirring from time to time, until the lentils are tender and the ragu nice and thick. If it starts to look dry, add more stock, if it's a bit too wet, just leave the lid off and cook for a little longer.

Season to taste and throw in the basil. Lovely on pasta, makes a delicious lasagna filling or stuffing for stuffed roast vegetables – how versatile can you get?

*Sue Lelliott*

---

## DOGS OF FROYLE–WE NEED YOUR HELP!

*Final call for Froyle Dog calendar photos!*



We are planning a calendar featuring the dogs of Froyle, all for a good cause. If you have a photo of your dog which you would be happy to share, please email it to [nigelsouthern@mac.com](mailto:nigelsouthern@mac.com). We go to print next month so you'll have plenty of time to purchase these limited edition Christmas Spectaculars to give friends and family. Remember: a dog's for Christmas, not for life!

*Nigel Southern*

## **100 Club**

The winners in the September draw were:

- 1st Caroline Wilkinson
- 2nd Chris Marston
- 3rd Tim Watkins
- 4th Roz Packett

Congratulations to all!

*William Knowles*

[wbk@wbknowles.com](mailto:wbk@wbknowles.com); 07775 928933

---

## **Ernie Milam 24 7 38 to 23 8 25**

Brenda would like to thank those people who have sent the family cards. Also her neighbours who have been a fantastic support. I'm afraid Ernie was not really a village person but I hope he will be remembered for his garden which he loved sharing.

*Brenda Milam*

---

## **Shirley Bellis**

Sincere thanks to all, for the get well cards and thoughtful messages, following my recent knee replacement surgery. We really do live in a very caring community.

*Shirley Bellis*

---

## **FROYLE SMALL ADS**

A reminder - Small ads are free to all Froyle residents (one per month).

So why not advertise items you no longer need, or are looking for, right here?

Or indeed services you can offer, or are trying to find?

Just email your text - and photo if you have one - to [froylemageditor@gmail.com](mailto:froylemageditor@gmail.com).



**ST MARY'S CHURCH CHRISTMAS FAIR 2025**  
**will be held on**

**SATURDAY 22nd NOVEMBER**  
**11 am – 2 pm**

We have an exciting selection of stalls for the Christmas Fair, including glass, jewellery, wooden gifts, soap, candles, Christmas crafts, scarves and a raffle. Please contact us as soon as possible if you would like to join in and take a stall yourself.

Come and spend some time choosing your Christmas gifts and then refresh yourself with homemade soup, tea/coffee and mince pies.

For Stalls Contact : Jane Macnabb [janemacnabb@hotmail.com](mailto:janemacnabb@hotmail.com) or  
Caroline Findlay [carolinefindlay@hotmail.com](mailto:carolinefindlay@hotmail.com) for further details.



**WANTED FOR :**  
**ST MARY'S CHURCH CHRISTMAS FAIR 2025**  
**SATURDAY 25<sup>TH</sup> NOVEMBER 11 am – 2 pm**

For the Gift Stall – we will have a box at the Meeting Place for two weeks beforehand or ring me and I will collect – Caroline Findlay 22019  
email: [carolinefindlay@hotmail.com](mailto:carolinefindlay@hotmail.com)

For the Deli Stall – fresh savoury or sweet dishes, cakes, biscuits, home-made chutneys, jams, marmalades or any other goodies are very welcome! Please ring  
Susie Robertson 520820 email: [sjrinfroyle@gmail.com](mailto:sjrinfroyle@gmail.com) or  
Jo Mills 22384 email: [joannamills@yahoo.com](mailto:joannamills@yahoo.com)

# ST MARY'S CHURCH NOTES

Vicar: The Reverend Matt Boyes 07469 270590 E: [matt@benbinfo.co.uk](mailto:matt@benbinfo.co.uk)

Administrators: 01420 23339 E: [admin@benbinfo.org](mailto:admin@benbinfo.org) W: [www.benbinfo.co.uk](http://www.benbinfo.co.uk)



## Church Wardens:

Simon Marshall 07734 214419

[sm517@icloud.com](mailto:sm517@icloud.com)

Jack Stephenson 01420 23216

[romanhorse@hotmail.co.uk](mailto:romanhorse@hotmail.co.uk)

**Anna Friend:** Sarah Roberts

07831 294852 [sarahfroyle@gmail.com](mailto:sarahfroyle@gmail.com)

## Benefice Pastoral Care

Nick Carter 01420 489122

[nick.carter1945@outlook.com](mailto:nick.carter1945@outlook.com)

## Anna Chaplain:

The Rev Fran Harrison 07765 058593

[annachaplain@benbinfo.co.uk](mailto:annachaplain@benbinfo.co.uk)

## OCTOBER SERVICES

Sun 5 Oct	9.30am	Binsted	Holy Communion & Children's Church
	11.00am	Oakhanger	Holy Communion
	6.00pm	Bentley	Praise
Sun 12 Oct	8.00am	Binsted	Holy Communion
	9.30am	Bentley	Morning Worship & Children's Church
	<b>11.00am</b>	<b>Froyle</b>	<b>Holy Communion</b>
Sun 19 Oct	6.00pm	Kingsley	Praise
	<b>9.30am</b>	<b>Froyle</b>	<b>Morning Worship</b>
	11.00am	Kingsley	Holy Communion
Sun 26 Oct	4.00pm	Binsted	Messy Church
	9.30am	Bentley	Holy Communion & Children's Church
	11.00am	Binsted	Morning Worship
	<b>6.30pm</b>	<b>Froyle</b>	<b>Choral Evensong</b>



## THE VIEW FROM THE VICARAGE

I love the old TV show Father Ted. Its observation of the stresses and strains placed on a bumbling and inept priest are hilarious and many within the church can see themselves in the characters and situations. At one point Father Ted says, "That's the great thing about Catholicism – it's very vague and no one knows what it's all really about!" Change the word Catholicism for Christianity and you get a very common response to church and faith today. Many people have a deep question regarding the church, what is it all about?

Many have fond childhood memories about church, singing hymns at school, remembering some of the Bible stories, like Noah's Ark or Daniel in the lion's den. But what is it all about? Looking at the Church of England, there are churches in every village and town and every square inch of the country is covered by parishes. Everyone, whether you believe or not, is entitled to call on the local church for weddings and funerals, or other life events. Churches are places of beauty and oases of quiet in a rushing world which many enjoy visiting. What is it all about?

Wherever you go around the world, if you see a Starbucks or a McDonalds, they will look the same and have similar layouts and menus. If you go into a church, there may be some things in common, but each church is individual and you may have a service with an organ, or guitars, with robes, or casual clothing. There will be prayers and music and a sermon, but it will feel different from place to place. Churches are not uniform but have some things in common. What is it all about?

Is Father Ted right? That the church is very vague and no one knows what it's all really about?

Christianity is ultimately not about a faith, a system of belief or its buildings and art. It is about a person. Jurgen Moltmann became a Christian while he was a prisoner of war in the Second World War in Scotland. He was impressed with the love he received from the local people who gave him a German Bible to read. He became an influential theologian and thought deeply about evil and suffering. He concluded,

"Where Jesus is, there is life. The sick are healed, saddened life is given fresh heart, marginalised life is accepted, captive life is freed. The movements of Jesus are nothing other than movements of healing, of liberation, of righteousness and justice. Jesus didn't bring a new religion into the world. What he brought was new life."

Our society, culture and nation need new life. We need hope and something worth living for. We need a purpose and direction. When you lose something, you don't just carry on. You retrace your footsteps until you find what you lost. It is time for all of us to stop and go back and rediscover God's rescue plan for humanity. Father Ted was wrong. Christianity isn't vague. Faith in Jesus, and the life he offers, is true. He alone can give us a fresh start. I invite you to reconsider Jesus and his truth for yourself. May God heal our hearts and our land.

Every blessing to you and yours, *Matt Boyes, Rector Of Bentley, Binsted & Froyle*

## St Mary's News

As we get fully into autumn, we are back to a more regular service pattern. We finished the summer with a wonderful benefice service at Froyle on 31 August, with a congregation of over 70 from the village as well as from Binsted, Bentley and Kingsley/Oakhanger. On 14 September we also had another benefice service, similarly well attended by all the villages, at Binsted. At the time of going to press we are looking forward to a very busy service on 21 September, which is not only our Harvest Festival service, but is also an important event for another reason, as we celebrate the christening of Otto Hatcher Mills! And just in case the day wasn't busy enough, the service this year starts with breakfast at 9.15 and incorporates Messy Church and family activities! It will be a new and somewhat experimental format!

Some of you will have attended in June the first Saturday breakfast discussion hosted by Matt (Matt's Chats - and see facing page) at the Binsted Inn to explore what Christianity has to offer in addressing the big uncertainties surrounding human existence – the 'meaning of life'.... Those who went found it both stimulating and fun. The second of Matt's Chats is to be held at the Anchor on 18th October at 9:30 am – do come along!

*Simon Marshall*  
Churchwarden



# SAVE THE DATE

## Real Nativity

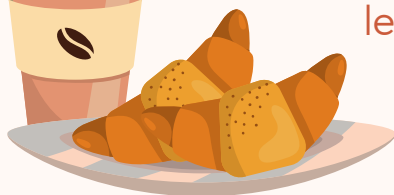
This year the Real Nativity will be happening in Upper Froyle.

Do come and join us at 6pm on Tuesday 23<sup>rd</sup> December.

Everyone's welcome for an exciting hour of Christmas revealed!



# GOOD MORNING



let's have breakfast



introducing

# MATT'S CHATS

***Good food and meaningful conversation.***

*A relaxed hour with our vicar, exploring Christian ideas from the big to the small. Open to all whether you're a lifelong believer or just curious.*

**9:30am**

**18th October 2025**

**The Anchor Inn, Lower Froyle**

**Breakfast provided**

Bring your questions, Bring a Friend and Bring an Appetite.

Pop us an email to let us know you are coming so we can provide enough food -  
[admin@benbinfro.org](mailto:admin@benbinfro.org)

# THE REAL NATIVITY COMES TO FROYLE

**TUESDAY, 23RD DECEMBER  
6PM**



**INTERESTED IN PERFORMING?  
Contact [allimalone@sky.com](mailto:allimalone@sky.com) to  
register your interest.  
NO EXPERIENCE NECESSARY.**



## Step Into the Story – Join *The Real Nativity*!

This December, our village will bring the Christmas story to life like never before—and we need *you* to make it happen!

We're calling on all ages, from tiny tots to sprightly seniors, to help us create **The Real Nativity**: a festive, fun-filled retelling of the very first Christmas. Whether you've trodden the boards before or never spoken a line on stage, this is your chance to shine.

We're on the lookout for:

- ✦ **The Angel Gabriel** – with a message to share
- ✦ **Joseph** – steady and kind
- ✦ **An Innkeeper** – who can say “no room” with style
- ✦ **Wise Men or Women** – the more the merrier
- ✦ **A Flock of Shepherds** – to spread the good news.

No experience? No problem! Costumes, rehearsals, and plenty of laughter will be provided. What matters most is your enthusiasm and a willingness to join the fun.

So, whether you're seven or seventy, come and be part of something magical. Bring your family, bring your friends, bring your best “baa” if you fancy being a sheep—we'd love to have you.

### Interested?

Pop your name down at the Village Hall or email [allimalone@sky.com](mailto:allimalone@sky.com) by 31 October. Rehearsals will be relaxed and full of festive cheer, and the performance promises to be a heart-warming highlight of the season.

Let's celebrate the true meaning of Christmas together—**come and take your place in *The Real Nativity*!**

*Allison Malone*



### To start you thinking! Christmas Tree Festival 2025



St Mary's Church, Froyle is planning to host a Christmas Tree festival this year.

We are looking for Froyle residents (and external contributors) to join in the fun by decorating a small Christmas Tree which will be displayed in the church over the Christmas period. There will be a few rules (size etc) but ultimately we are looking for you to have fun and use your imagination. Further details on how to get involved will be in the next magazine.

***We need your participation and imagination!!!!***



## ALTON FOOD BANK

### PLEASE SUPPORT

Thank you for your continued support for the Alton Foodbank. Your generous donations have enabled it to meet the growing demands which it is seeing locally.

Please continue to support this amazing charity; it is particularly in need of the following items at the moment:

Tinned vegetables	Tinned potatoes
Rice (dry)	Sponge puddings (long life)
Tinned custard	Tinned meat (pies, stewing steak, hot dogs)
Tinned rice pudding	UHT milk
Bags of sugar	Antibacterial cleaning spray
Toilet rolls	Washing up liquid
Shower gel	Sanitary products
Conditioner	Shampoo

There is a donation box in the Village Hall, or you can drop off at Greenfields Cottage, Lower Froyle. There are also collection points in Bentley and Binsted churches, and at Alton Maltings where there is a drop box outside the main door.

If you have any queries, please call me.

*Louise Marston*  
**07885 350381**

#### **Local Handyman Services**

*Reliable handyman for help with all those jobs around your Home and Garden*



*I am Chris Marston and I have lived in Froyle for many years.  
If you need some help with your **H**ome or **G**arden maintenance,  
call me on **07764 255 419** to arrange a no-obligation quote.*

**Outside** - Hedge cutting, strimming, shed refurbishment, raised bed building, pergola design and build, garden gate fix

**Inside** -Curtain poles, flat pack assembly, shelving, minor repairs/plaster work and painting/decoration

*Local References available and fully insured*





## News from Bentley CE Primary School

It has been a real joy to welcome the children back to school after the summer break. The new academic year has started with such positivity – the children have settled well with their new teachers, and we are delighted to welcome several new families into our school community.

A special mention must go to our new Year R children, who are already showing such courage as they begin their school journey. Staff visited them at home before term began, and they then had the chance to explore school life

in small groups before starting full time. They have taken all of this in their stride and are quickly becoming part of the Bentley family. We are very proud of them and the way they are already living out our school values of love, courage and community.

Our teachers have also been busy planning an exciting programme of trips to really bring learning alive for the children. For our Key Stage 2 pupils, the much-anticipated residential visits are already being booked – always a highlight of the year and a wonderful opportunity to build independence, friendships, and lasting memories.



**Come along to our  
Year R open sessions**

We are excited to announce the following sessions for any children looking to join us in September 2026:

● Thursday 23 October at 2pm	● Friday 21 November at 2pm
● Wednesday 5 November at 2pm	● Wednesday 26 November at 7pm
● Tuesday 11 November at 9.30am	● Wednesday 7 January at 9.30am

Each session lasts for approximately 1 hour.

Bentley provides the highest quality education which challenges and excites each and every child. Our children also benefit from after school clubs, wraparound care, forest explorers, residential visits, sporting fixtures and much, much more!

Visit [bentleyprimaryschool.co.uk](https://bentleyprimaryschool.co.uk) for more information or to book a session.



**Bentley CE Primary School**  
School Lane, Bentley, Farnham GU10 5P  
[bentleyprimaryschool.co.uk](https://bentleyprimaryschool.co.uk)



Ofsted  
Good  
Provider

Looking ahead, we have some open events planned. If you know anyone with a child due to start school in September 2026, please do encourage them to come and visit. We would love to show them all that Bentley CE Primary has to offer.

*Vicky Hallett*

*Head teacher, Bentley CE Primary School*



One of Hampshire's most successful fairs, The Dummer Fair, opens its doors again this October.

Join us at Dummer Cricket Ground, on Wednesday 9th and Thursday 10th October with the event set to feature over 85 stalls ranging from crafts and food to clothing and gifts. There will be a delicious real coffee pop up van and this year sees the return of our popular café on Thursday lunchtime. Ample parking on site - RG25 2AR.

Our stallholders will have plenty of items to tempt you as early Christmas gifts, birthday and special occasion presents or just to treat yourself and your loved ones! All proceeds go to Treloar's, a local highly specialist school and college supporting young people with physical disabilities.

Tickets on sale now.

For more information, please contact – The Treloar's Events Team: [events@treloar.org.uk](mailto:events@treloar.org.uk) or see the website: [www.dummerfair.org.uk](http://www.dummerfair.org.uk)





# Waverley Singers

Do you enjoy our concerts and would you like to get involved and support the choir but don't sing?

Become a Patron for as little as £50.

Contact Gillian Pickering for details  
[patrons@waverleysingers.com](mailto:patrons@waverleysingers.com)



Sunday 26 October 2025, 6pm

Waverley Singers

[waverleysingers.com](http://waverleysingers.com)

Farnham Maltings, GU9 7QR

Tickets: in advance/on the door  
Premium £20/£22 General £18/£20

# Opera Gala

Soprano - Nina Bennet  
Tenor - Robin Bailey

Piano - Jakob Rothoff  
Conductor - Richard Pearce

[ticketsource.co.uk/waverleysingers](http://ticketsource.co.uk/waverleysingers)

Retiring collection in aid of Phyllis Tuckwell



# Professional Foot Care, Right in Your Community

Gentle, respectful treatment for:

- Diabetic foot health checks
- Verrucas (children and adults)
- Corns, calluses and hard skin
- Foot pain, bunions and plantar fasciitis
- Fungal nails and athlete's foot
- Recovery after injury or surgery
- Nail trimming and ingrown toenails
- Routine foot maintenance to stay comfortable

Supporting your **mobility, comfort and independence** — one step at a time.  
Appointments held locally in village halls. No long NHS waits. No need to travel to town.

DBS checked • Qualified Foot Health Practitioner and Injury Rehab Specialist

Joanna DipFH BSc (Hons)

☎01420 343 130

✉Joanna@BalancedBodiesSport.com

**The Foot Health Clinic by Balanced Bodies**  
*Bringing expert care to the heart of your community*



SEPT

Froyle raised, grass finished  
beef becomes available.  
GO TO [aion.farm](https://aion.farm)  
to preorder

Your local produce

# 15% off

## for Froyle residents

\*Enter "Froyle" at checkout and  
get 15% off your total order on  
beef and lamb.

Grass Raised & Finished

Local Froyle Raised

[www.aion.farm](https://www.aion.farm)



USE CODE: "Froyle"



Selective steaks on request. Email [pasture@aion.farm](mailto:pasture@aion.farm) for requests.

## [www.aion.farm](https://www.aion.farm)

✓ Grass Raised ✓ Grass Finished ✓ Local Produce ✓ Ethical & Sustainable

- Domestic / Commercial Wiring
- Fuse Board / Consumer Unit Upgrades
- LED Lighting & Fixtures
- Sockets & Smoke Alarms
- PAT Testing & Fault Finding
- Inspection & Testing
- New or Refurbished Builds
- Earthing & Bonding
- Electrical Surveys
- **All Work Guaranteed & Fully Insured**

Get in touch for your free estimate today:

**Tel: 07917 680479** (24 hrs)

[info@e-tekelectrical.com](mailto:info@e-tekelectrical.com)

[www.e-tekelectricalservices.co.uk](http://www.e-tekelectricalservices.co.uk)



## RACHEL'S HOMEOPATHY

*A complementary way to better health  
Treating causes to eliminate symptoms*

Clinics in

**ALTON - PETERSFIELD - FAREHAM**

**ON-LINE - HOME VISITS**

**RACHEL CHANCELLOR, RSHom. (Registered Homeopath)**

Appointments: 07766-524 877 or [rachel@rachelshomeopathy.co.uk](mailto:rachel@rachelshomeopathy.co.uk)

[www.rachelshomeopathy.co.uk](http://www.rachelshomeopathy.co.uk)

Registered member of



**Society of Homeopaths**



# The unrushed moments make all the difference

We've helped thousands of families stay safe, comfortable, and happy at home. Whatever situation you're facing, whatever the question, Home Instead is here to help



 **home  
instead.**  
01420543214

- Companionship Care – Matched Care Professionals for meaningful connections
- Home Help & Meal Prep – Clean, safe homes with nourishing, home-cooked meals
- Personal Care – Dignified support with bathing, dressing, and hygiene
- Mobility Support – Safe movement at home, including transfers and positioning
- Health Appointment Support – Help attending important medical appointments
- Community Engagement – Stay active with visits to local groups and outings
- Transportation – Reliable help getting to shops, friends, and appointments
- Medication Management – Support with timely and accurate medication routines


# FLORENCE

## *The Barn & Coffee Shop*

*A local independent store offering a curated selection of homeware, clothing, and coffee.  
Thoughtfully chosen pieces, a cosy café, and a warm welcome.*


### OPEN HOURS

*SATURDAY 9AM-5:30 PM & SUNDAY 9:30AM-5:00PM*

 Hen & Chicken Pub  
Upper Froyle, Alton, GU34 4JH

*Follow our instagram for more updates @shopflorenceclothing  
Email us - [shopflorenceclothing@gmail.com](mailto:shopflorenceclothing@gmail.com)*

*We look forward to seeing you!*



## What's On at The Anchor Inn

Thursday 2<sup>nd</sup> October at 7.30pm

### Monthly Quiz Night

Free entry. Max 6 people per team. Prizes to be won

---



Thursday 9<sup>th</sup> October at 7.30pm

### Monthly Bingo Night

£2 per game, 3 games played each night. Cash prizes to be won

---

## Did you know we also have bedrooms?

With Tudor-style beams and antique furnishings, our luxurious rooms are individually designed with their own unique English quirks and charm.

---

Thursday 16<sup>th</sup> Oct from 7pm

### Foods of the world Supper Club

3 course meal at £40 per person.

Book your table today online or on 01420 23261 option 4

---

Thursday 27<sup>th</sup> Nov at 7.30pm

### Winter Gin, Spritz & Cocktail Masterclass

More details to follow. Ticketed event.

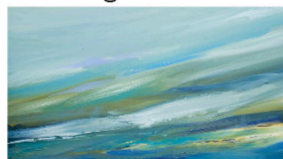
---





# athertongreenart

Creating vibrant contemporary collections



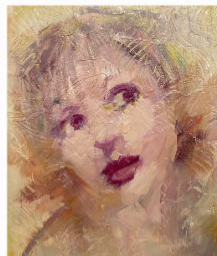
Be inspired by our unique collection of contemporary art including paintings, prints, sculptures and ceramics by a selection of artists in our gallery at Farrington Place. Open by appointment in October

Then join us for our Winter show from Sunday 23rd November & then Thursdays - Sundays until December 7th

**Art Gallery:** Atherton Green Art is situated in a lovely Victorian home in the village of Farrington in Hampshire and brings the exciting talents of a select group of emerging and mid career artists to collectors and new buyers of art.

*'Whether you want to start a collection, build a collection or commission a piece of art, we are here to help'*

Work is available online at [www.athertongreen.art](http://www.athertongreen.art)



Farrington Place  
Church Road, Upper  
Farrington, Alton,  
Hampshire, GU34 3EH  
+44 (0) 7890 098 036  
[sue@athertongreen.art](mailto:sue@athertongreen.art)  
[@athertongrntart](https://www.athertongreen.art)

The Beehive Montessori pre-school.  
Settings in the villages of Shalden and Lindford  
Providing high quality education in a nurturing environment  
with experienced staff.



Funding for 2, 3 and 4 years available.  
For further information call Annette or Jan 07795 270184  
or join our Facebook pages.

[www.beehive-alton.co.uk](http://www.beehive-alton.co.uk)



## ACORNS B&B



Acorns is a self-contained guest cottage, located in the picturesque village of Lower Froyle.

It has its own entrance, parking, and a south facing private terrace which offers beautiful views across open fields.

There is a generous bedroom with a super-king sized bed (two singles can be arranged on request), comfortable sitting room, together with a small but very well-equipped kitchen and a luxury shower room.

Fresh bread and milk, juices, jams, cereals and yoghurts will be provided for your breakfast along with a selection of teas and coffees.

Consistently awarded 'guest favourite' on Airbnb.

Contact Alice for further information on  
07768 165233 or [ghinns@gmail.com](mailto:ghinns@gmail.com)  
Instagram @acornsbnb



## Move with Tegan

Froyle Village Hall  
Ryebridge Lane, Lower  
Froyle, Alton GU34  
4LG

## Pilates in Froyle

### Monday

09:30 Dynamic Mat

10:30 Gentle Mat

### Wednesday

Mixed Mat

18:30-19:30

For enquiries, contact Tegan on  
07761 209998 or email  
[teganhansensa@gmail.com](mailto:teganhansensa@gmail.com).

£10 per Pilates Class  
£50 for block of 6 classes



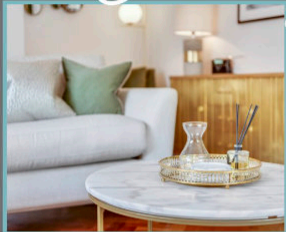
Made-to-Measure Curtains, Blinds, Upholstery  
Interior Design  
Concept to Completion Service  
Extensions, Conversions & New Builds

Scan to book  
your **FREE**  
design  
consultation



## AWARD-WINNING INTERIOR DESIGN

# On Your Doorstep



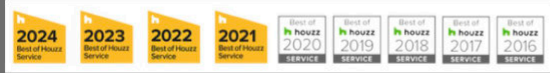
Over 30 years  
experience!



Award-winning  
customer service



Inspirational  
designs



[www.renaissanceinteriorshw.co.uk](http://www.renaissanceinteriorshw.co.uk)



[hello@renaissanceinteriorshw.co.uk](mailto:hello@renaissanceinteriorshw.co.uk)



01252 220 400



Virginia Villas, High Street, Hartley Wintney, Hampshire, RG27 8NW





**Trenbo's**

Handyman - Electrical - Maintenance

**07376908787**  
***trenbosjobs@gmail.com***

# Fine Framing

Picture Framers  
4 Weyside Park Newman Lane  
Alton GU34 2PJ  
Tel: 01420 82324  
Email: [info@fine-framing.co.uk](mailto:info@fine-framing.co.uk)

Opening Times:  
Tuesday-Friday 9.30am-5.00pm  
Saturday 10.00am-12 noon  
Closed Monday



**DOWNIE &  
GADBAN**

Solicitors & Notary Public

Est. 1905



**Residential Conveyancing - Wills - Power of Attorney - Probate - Commercial Property - Property Development - Dispute Resolution**

Instant conveyancing quotes available on our website  
[www.downieandgadban.co.uk](http://www.downieandgadban.co.uk)

**Why Choose Us?**

We pride ourselves on being friendly, approachable and professional. We have been in our current building at the end of the High Street in Alton (close to M&S, The Ivy House and The White Horse) since 1962 and have been serving generations of families in the Alton area since 1905.

*To discuss how any of our team could help you please give us a call and we will be happy to discuss your requirements.*

**Tel: 01420 82879**

**Email: [info@downieandgadban.co.uk](mailto:info@downieandgadban.co.uk)**

**Website: [www.downieandgadban.co.uk](http://www.downieandgadban.co.uk)**

## Andrew Wood

Heating and Plumbing Engineer



Gas Safe No. 15316

- BOILER CHANGES
- BOILER SERVICING
- POWER FLUSHING
- CENTRAL HEATING SYSTEMS
- GAS INSTALLATIONS
- GENERAL PLUMBING

For free estimates or advice telephone **Bentley (01420) 22637**

# Paul Pascall

Painter and Decorator  
Estimates and References  
Available

**01252 328965 Evenings**  
**07803 723530 Daytime**



## Accepting new patients

- General Dentistry
- Dental Emergencies
- Dental Implants
- Adult Orthodontics
- Teeth Whitening
- Sedation
- Dental Acupuncture

The Clinic is on the ground floor so is easily accessible. Free on-site parking also available.

For more information please visit our website or get in touch



# 01420 550616

Shine Dental Clinic, Unit 10A Mansfield Business Park, Medstead, GU34 5PZ,  
[info@shinedentalclinic.co.uk](mailto:info@shinedentalclinic.co.uk)



## Advertising rates 2025/2026

For Froyle businesses: £40+VAT/year, £24+VAT/half year for advertisements of **up to half a page/a third of a page on inside covers.**

For non-Froyle businesses: £60+VAT/year, £36+VAT/half year for **up to half a page/a third of a page on inside covers.**

For both residents and non-residents: £120+VAT/year, £72+VAT/half year for **a full page, £137.50+VAT/year for inside cover full page.**

The advertising year begins with the April edition, and the half-year with either the April or October edition.

All advertising must be requested and paid for through the Parish Clerk at [froylemageditor@gmail.com](mailto:froylemageditor@gmail.com) and copied to [clerk@froyleparishcouncil.co.uk](mailto:clerk@froyleparishcouncil.co.uk).

We are pleased that local trades and service providers advertise with us and we do hope that you support them. However we do not check or endorse them in any way.

---

## NOTES TO CONTRIBUTORS

The magazine is published in A5 size, portrait orientation, both online and in print. The online version is in colour but the printed version is in black and white.

### Posters/Adverts

If you want a full page design your page in portrait layout. For half pages use landscape. You can send your copy in any size but it will be resized to fit on A5 portrait. To see how it will look is to design a full page as A5 portrait and a half page as A6 landscape.

Please submit artwork and copy as a JPG/PNG picture or PDF file, with, if available, the original Word or Powerpoint document and any photographs.

### Articles

Please send text and pictures separately as well as in your complete article. As a rough guide a page is about 500 words – with no pictures.

Pictures should be high resolution JPEG or PNG files.

### General

All magazine contributions should be submitted to [froylemageditor@gmail.com](mailto:froylemageditor@gmail.com). Please refer to the back cover for next month's magazine deadline.

In the event of any question over including or excluding any item or part of an item, or in relation to any other matter, the Editor's decision is final.

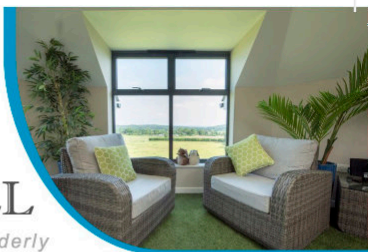
## Village Events October 2025

<i>Sun</i>	<i>Mon</i>	<i>Tue</i>	<i>Wed</i>	<i>Thu</i>	<i>Fri</i>	<i>Sat</i>
			1	2 Garden waste	3 1000-1200 Meeting place	4
5  1600-1800 Life drawing	6 Recycling & glass	7	8	9	10 1000-1200 Meeting place 1930 Gardening Club	11
12 1100 Holy Communion	13 Rubbish  1900 FPC	14	15	16 Garden waste	17 1000-1200 Meeting place	18
19 0930 Morning Worship	20 Recycling & glass  1830 VH Committee	21 1000-1200 Life drawing	22	23	24 1000-1200 Meeting place 1930 Froyle Wildlife	25
26  1830 Evensong	27 Rubbish	28	29	30 Garden waste	31 1000-1200 Meeting place - <b>in Church</b>	



## PAX HILL

*Care home for the elderly*



Pax Hill provides person-centred care for Residential, Dementia, Nursing, and Palliative care needs in modern, comfortable accommodation.

Two purpose-built care homes are set in nine acres of beautiful gardens in the picturesque village of Bentley.

*For more information or to discuss your individual needs, please call Angela.*

**01420 525882 | [mail@paxhill.co.uk](mailto:mail@paxhill.co.uk) | [www.paxhill.co.uk](http://www.paxhill.co.uk)**



# Physiotherapy

In the centre of Bentley  
by

## Pippa Blizzard

Chartered Physiotherapist  
MCSP HCPC BAHT AACP

[physiotherapy@pippa-blizzard.co.uk](mailto:physiotherapy@pippa-blizzard.co.uk)

07714 239644

[www.pippa-blizzard.co.uk](http://www.pippa-blizzard.co.uk)



## SILVERWING CARS

Call Tony on 07971 859947

Reliable Professional Taxi Service  
Advanced Bookings Advised

# Froyle Directory

**Froyle Parish Council** ⑤ [www.froyleparishcouncil.org.uk](http://www.froyleparishcouncil.org.uk)

Andrew Potter, Clerk ✉ [clerk@froyleparishcouncil.org.uk](mailto:clerk@froyleparishcouncil.org.uk) ☎ 07979 030571

**Froyle Residents Email List** email to join ✉ [clerk@froyleparishcouncil.org.uk](mailto:clerk@froyleparishcouncil.org.uk)

**East Hampshire District Council** [www.easthants.gov.uk](http://www.easthants.gov.uk)

Tony Costigan, District Councillor ✉ [tony.costigan@easthants.gov.uk](mailto:tony.costigan@easthants.gov.uk) ☎ 07770 666896

**Hampshire County Council** [www.hants.gov.uk](http://www.hants.gov.uk)

Mark Kemp-Gee, County Councillor ✉ [mark.kemp-gee@hants.gov.uk](mailto:mark.kemp-gee@hants.gov.uk) ☎ 07748 945947

**Froyle Village Hall** ⑤ [www.froylevillagehall.co.uk](http://www.froylevillagehall.co.uk)

Chair: Gillian Paul: [chairman@froylevillagehall.co.uk](mailto:chairman@froylevillagehall.co.uk) ☎ 07774880885

Bookings: Sarah Zorab ✉ [bookings@froylevillagehall.co.uk](mailto:bookings@froylevillagehall.co.uk) ☎ 01420 520361

**The Meeting Place - Fridays 10-12 at the Village Hall** Susie Robertson ☎ 01420 520820

**Froyle Gardening Club** ⑤ [www.froylegardeningclub.co.uk](http://www.froylegardeningclub.co.uk)

Geoff Hawkins ✉ [info@froylegardeningclub.co.uk](mailto:info@froylegardeningclub.co.uk) ☎ 01420 88176

**Froyle Wildlife** [www.froylewildlife.co.uk](http://www.froylewildlife.co.uk) - Barry Clark ☎ 01420 23520

**Tree Warden** Sue Lelliott ✉ [tree.warden@froyleparishcouncil.org.uk](mailto:tree.warden@froyleparishcouncil.org.uk) ☎ 01420 22015

**Neighbourhood Watch** ⑤ Stephen Inskip ✉ [stephen.inskip22@gmail.com](mailto:stephen.inskip22@gmail.com) ☎ 07581 211595

**Speedwatch Group** Gordon Mitchell ✉ [champersg@hotmail.com](mailto:champersg@hotmail.com) ☎ 01420 23851

**Police Community Support Officers** ☎ 101

PC Alex Routt ✉ [alex.routt@hampshire.police.uk](mailto:alex.routt@hampshire.police.uk) or 07891 484 670

PC Jess Hornsby ✉ [jessica.hornsby@hampshire.police.uk](mailto:jessica.hornsby@hampshire.police.uk)

**Froyle Archive** [www.froyle.com/archive](http://www.froyle.com/archive)

**The Benefice of Bentley, Binsted & Froyle** ⑤ [www.benbinfro.co.uk](http://www.benbinfro.co.uk)

Matt Boyes, Vicar - ✉ [matt@benbinfro.co.uk](mailto:matt@benbinfro.co.uk) ☎ 07469 270590

Sarah Roberts, Anna Friend - ✉ [sarahrfroyle@gmail.com](mailto:sarahrfroyle@gmail.com) ☎ 07831 294852

St Mary's Church Flower Rota - Gill Bradley ☎ 01420 520484

**Bentley, Binsted and Froyle Care Group** - Bookings ☎ 07775 458873

⑤ **Froyle on Facebook** - *Froyle Residents, Froyle Advertising*

**Key:** ☎ Telephone ✉ Email ⑤ Facebook ⑥ WhatsApp

## OCTOBER DEADLINE: FRIDAY 24 OCTOBER 2025

For Notes to Contributors, please see page 39.